

# DR | DRAGON™

## CEILING FAN HEATER



## THE AUTHENTIC DRAGON!

The hallmark of the Dragon is that it recycles residual warm air that has accumulated at the ceiling, mixing it with the cooler air below. The result? Uniform air temperature and energy savings. The Dragon offers an output of 2000 W to 10 000 W, depending on the model, and offers voltages ranging from 208 V to 600 V. This unit can be ceiling surface mounted or ceiling recessed, suspended at a minimum of 8 feet from the floor. The Dragon is well suited for building entryways, stairwells, warehouses, garages, workshops and hallways. Nothing beats the power of the Dragon!

### FAST TEMPERATURE RISE VIA HEAT RECOVERY

### CHOICE OF 2000 W TO 10 000 W

### STATE-OF-THE ART EFFICIENCY NICHROME ELEMENT

### SURFACE MOUNTED OR RECESSED INSTALLATION

### OPTIONAL OFS MODEL TO CONTROL FAN-ONLY MODE WITH WALL SWITCH

#### IDEAL FOR:

building entryway, warehouse, stairwell, garage, workshop

### COLOURS

- **standard:** white, soft white
- **Orora (optional):** refer to [www.stelpro.com/en-CA/Orora](http://www.stelpro.com/en-CA/Orora)

### FINISH

- epoxy-polyester powdercoat

### MANUFACTURING

- 20-gauge steel cabinet and 14-gauge steel grille
- quiet helicoidal fan
- thermal protection with automatic reset
- totally enclosed, permanently lubricated motor

### ELEMENT

- nichrome element produces instant heat

### CONTROL

- wall thermostat (not included) – the use of an electronic thermostat is strongly recommended (up to 4000 W)
- fan-only mode for continuous air circulation, controlled by built-in selection switch

- fan-only mode available for use with wall mounted switch (optional OFS model, wall switch not provided)
- heating mode, confirmed by pilot light when heating is on
- connection of multiple units to the same thermostat is possible with a relay kit without a transformer (optional) and an external transformer (not provided)

### INSTALLATION

- ceiling recessed in a T-bar (DRR model)
- ceiling surface mounted with bracket to support unit during wiring (DRI and DRII models) (included)
- install at a minimum distance from adjacent or surrounding walls: 12 in. (DRR or DRI models); 24 in. (DRII models)
- mounting heights: 8 ft. (2 kW or 3 kW units); 10 ft. (4 kW or 5 kW units); 12 ft. (7.5 kW or 10 kW units)
- 2 to 6 wires required for connections according to the selected control (see the connections table in the installation guide)

### WARRANTY

- three years

°STELPRO

Stelpro reserves the right to modify descriptions, manufacturing specifications or prices without prior notice. No returns accepted on optional-colour products. For all the latest models and prices, please refer to our website at [www.stelpro.com](http://www.stelpro.com).



# TECHNICAL SPECIFICATIONS

## DRI AND DRII MODELS (SURFACE MOUNTED INSTALLATION)

WITHOUT CONTROL		BUILT-IN THERMOSTAT		240 V CONTROL		24 V CONTROL		POWER	VOLTAGE	FLOW	WEIGHT	
CODE	PRICE	CODE	PRICE	CODE	PRICE	CODE	PRICE	WATTS	VOLTS	CFM	KG	LB
DRI0281	507.00	DRI0281T	578.00	---	---	DRI0281C24	636.00	2000	208	250	7.2	16
DRI0221	486.00	DRI0221T	578.00	---	---	DRI0221C24	636.00	2000	240	250	7.2	16
DRI0381	528.00	DRI0381T	600.00	---	---	DRI0381C24	656.00	3000	208	250	7.2	16
DRI0321	492.00	DRI0321T	600.00	---	---	DRI0321C24	656.00	3000	240	250	7.2	16
DRI0481	548.00	DRI0481T	620.00	---	---	DRI0481C24	678.00	4000	208	450	7.2	16
DRI0421	512.00	DRI0421T	620.00	---	---	DRI0421C24	678.00	4000	240	450	7.2	16
---	---	DRI0581T	628.00	---	---	DRI0581C24	684.00	5000	208	450	7.2	16
DRI0521	518.00	DRI0521T	628.00	---	---	DRI0521C24	684.00	5000	240	450	7.2	16
---	---	DRII0281T	763.00	DRII0281C	780.00	DRII0281C24	823.00	2000	208	450	20.4	45
---	---	DRII0283CT*	1052.00	DRII0283C*	993.00	DRII0283C24*	1038.00	2000	208	450	20.4	45
---	---	DRII0221T	763.00	DRII0221C	780.00	DRII0221C24	823.00	2000	240	450	20.4	45
---	---	DRII0231CT	1052.00	DRII0231C	993.00	DRII0231C24	1038.00	2000	347	450	20.4	45
---	---	DRII0261CT	1052.00	DRII0261C	993.00	DRII0261C24	1038.00	2000	600	450	20.4	45
---	---	DRII0263CT*	1052.00	DRII0263C*	993.00	DRII0263C24*	1038.00	2000	600	450	20.4	45
---	---	DRII0381T	768.00	DRII0381C	785.00	DRII0381C24	828.00	3000	208	450	20.4	45
---	---	DRII0383CT*	1052.00	DRII0383C*	997.00	DRII0383C24*	1040.00	3000	208	450	20.4	45
---	---	DRII0321T	768.00	DRII0321C	785.00	DRII0321C24	828.00	3000	240	450	20.4	45
---	---	DRII0331CT	1052.00	DRII0331C	997.00	DRII0331C24	1040.00	3000	347	450	20.4	45
---	---	DRII0361CT	1052.00	DRII0361C	997.00	DRII0361C24	1040.00	3000	600	450	20.4	45
---	---	DRII0363CT*	1052.00	DRII0363C*	997.00	DRII0363C24*	1040.00	3000	600	450	20.4	45
---	---	DRII0481T	779.00	DRII0481C	795.00	DRII0481C24	839.00	4000	208	450	20.4	45
---	---	DRII0483CT*	1065.00	DRII0483C*	1008.00	DRII0483C24*	1050.00	4000	208	450	20.4	45
---	---	DRII0421T	779.00	DRII0421C	795.00	DRII0421C24	839.00	4000	240	450	20.4	45
---	---	DRII0431CT	1065.00	DRII0431C	1008.00	DRII0431C24	1050.00	4000	347	450	20.4	45
---	---	DRII0461CT	1065.00	DRII0461C	1008.00	DRII0461C24	1050.00	4000	600	450	20.4	45
---	---	DRII0463CT*	1065.00	DRII0463C*	1008.00	DRII0463C24*	1050.00	4000	600	450	20.4	45
---	---	DRII0581T	787.00	DRII0581C	802.00	DRII0581C24	844.00	5000	208	450	20.4	45
---	---	DRII0583CT*	1070.00	DRII0583C*	1011.00	DRII0583C24*	1056.00	5000	208	450	20.4	45
---	---	DRII0521T	787.00	DRII0521C	802.00	DRII0521C24	844.00	5000	240	450	20.4	45
---	---	DRII0531CT	1070.00	DRII0531C	1011.00	DRII0531C24	1056.00	5000	347	450	20.4	45
---	---	DRII0561CT	1070.00	DRII0561C	1011.00	DRII0561C24	1056.00	5000	600	450	20.4	45
---	---	DRII0563CT*	1070.00	DRII0563C*	1011.00	DRII0563C24*	1056.00	5000	600	450	20.4	45
---	---	DRII0781CT	1554.00	DRII0781C	1496.00	DRII0781C24	1542.00	7500	208	700	20.4	45
---	---	DRII0783CT*	1554.00	DRII0783C*	1496.00	DRII0783C24*	1542.00	7500	208	700	20.4	45
---	---	DRII0721CT	1554.00	DRII0721C	1496.00	DRII0721C24	1542.00	7500	240	700	20.4	45
---	---	DRII0731CT	1554.00	DRII0731C	1496.00	DRII0731C24	1542.00	7500	347	700	20.4	45
---	---	DRII0761CT	1554.00	DRII0761C	1496.00	DRII0761C24	1542.00	7500	600	700	20.4	45
---	---	DRII0763CT*	1554.00	DRII0763C*	1496.00	DRII0763C24*	1542.00	7500	600	700	20.4	45
---	---	DRII1081CT	1621.00	DRII1081C	1561.00	DRII1081C24	1605.00	10 000	208	700	20.4	45
---	---	DRII1083CT*	1621.00	DRII1083C*	1561.00	DRII1083C24*	1605.00	10 000	208	700	20.4	45
---	---	DRII1021CT	1621.00	DRII1021C	1561.00	DRII1021C24	1605.00	10 000	240	700	20.4	45
---	---	DRII1031CT	1621.00	DRII1031C	1561.00	DRII1031C24	1605.00	10 000	347	700	20.4	45
---	---	DRII1061CT	1621.00	DRII1061C	1561.00	DRII1061C24	1605.00	10 000	600	700	20.4	45
---	---	DRII1063CT*	1621.00	DRII1063C*	1561.00	DRII1063C24*	1605.00	10 000	600	700	20.4	45

Add W for white or SW for soft white (consult the optional colours chart or contact your Stelpro representative for all other colours).

Add OFS to control fan-only mode with a wall switch (not provided).

\*Three-phase unit

Models also available in 277 V and 480 V.

--- not available

# TECHNICAL SPECIFICATIONS

## DRR MODELS (RECESSED INSTALLATION)

WITHOUT CONTROL		BUILT-IN THERMOSTAT		240 V CONTROL		24 V CONTROL		POWER	VOLTAGE	FLOW	WEIGHT	
CODE	PRICE	CODE	PRICE	CODE	PRICE	CODE	PRICE	WATTS	VOLTS	CFM	KG	LB
DRR0281	881.00	DRR0281T	939.00	DRR0281C	953.00	DRR0281C24	997.00	2000	208	250	13.6	30
---	---	DRR0283CT*	1213.00	DRR0283C*	1157.00	DRR0283C24*	1201.00	2000	208	250	13.6	30
DRR0221	881.00	DRR0221T	939.00	DRR0221C	953.00	DRR0221C24	997.00	2000	240	250	13.6	30
---	---	DRR0231CT	1213.00	DRR0231C	1157.00	DRR0231C24	1201.00	2000	347	250	13.6	30
---	---	DRR0261CT	1213.00	DRR0261C	1157.00	DRR0261C24	1201.00	2000	600	250	13.6	30
---	---	DRR0263CT*	1213.00	DRR0263C*	1157.00	DRR0263C24*	1201.00	2000	600	250	13.6	30
DRR0381	895.00	DRR0381T	953.00	DRR0381C	967.00	DRR0381C24	1010.00	3000	208	250	14.7	32.5
---	---	DRR0383CT*	1230.00	DRR0383C*	1171.00	DRR0383C24*	1213.00	3000	208	250	14.7	32.5
DRR0321	895.00	DRR0321T	953.00	DRR0321C	967.00	DRR0321C24	1010.00	3000	240	250	14.7	32.5
---	---	DRR0331CT	1230.00	DRR0331C	1171.00	DRR0331C24	1213.00	3000	347	250	14.7	32.5
---	---	DRR0361CT	1230.00	DRR0361C	1171.00	DRR0361C24	1213.00	3000	600	250	14.7	32.5
---	---	DRR0363CT*	1230.00	DRR0363C*	1171.00	DRR0363C24*	1213.00	3000	600	250	14.7	32.5
DRR0481	910.00	DRR0481T	967.00	DRR0481C	981.00	DRR0481C24	1027.00	4000	208	450	14.7	32.5
---	---	DRR0483CT*	1242.00	DRR0483C*	1183.00	DRR0483C24*	1230.00	4000	208	450	14.7	32.5
DRR0421	910.00	DRR0421T	967.00	DRR0421C	981.00	DRR0421C24	1027.00	4000	240	450	14.7	32.5
---	---	DRR0431CT	1242.00	DRR0431C	1183.00	DRR0431C24	1230.00	4000	347	450	14.7	32.5
---	---	DRR0461CT	1242.00	DRR0461C	1183.00	DRR0461C24	1230.00	4000	600	450	14.7	32.5
---	---	DRR0463CT*	1242.00	DRR0463C*	1183.00	DRR0463C24*	1230.00	4000	600	450	14.7	32.5
---	---	DRR0581T	981.00	DRR0581C	997.00	DRR0581C24	1039.00	5000	208	450	15.4	34
---	---	DRR0583CT*	1257.00	DRR0583C*	1201.00	DRR0583C24*	1242.00	5000	208	450	15.4	34
DRR0521	923.00	DRR0521T	981.00	DRR0521C	997.00	DRR0521C24	1039.00	5000	240	450	15.4	34
---	---	DRR0531CT	1257.00	DRR0531C	1201.00	DRR0531C24	1242.00	5000	347	450	15.4	34
---	---	DRR0561CT	1257.00	DRR0561C	1201.00	DRR0561C24	1242.00	5000	600	450	15.4	34
---	---	DRR0563CT*	1257.00	DRR0563C*	1201.00	DRR0563C24*	1242.00	5000	600	450	15.4	34

Add W for white or SW for soft white (consult the optional colours chart or contact your Stelpro representative for all other colours).  
Add OFS to control fan-only mode with a wall switch (not provided).

\*Three-phase unit  
Models also available in 277 V and 480 V.  
--- not available



### DRR MODEL (RECESSED)

A REVOLUTIONARY METHOD OF HEATING, THAT ELIMINATES THE NEED FOR A TRADITIONAL CEILING FAN. The Dragon recuperates the warm air that would otherwise accumulate at the ceiling and recirculates it throughout the room.



### DRRII MODEL (SURFACE MOUNTED)

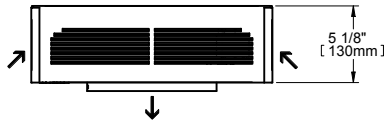
(PREVIOUS PAGE)

A UNIQUE SOURCE OF HEAT THAT OFFERS PERFORMANCE, STYLE, COMFORT AND ECONOMY! Ideal for garages, commercial entrances, factories and warehouses

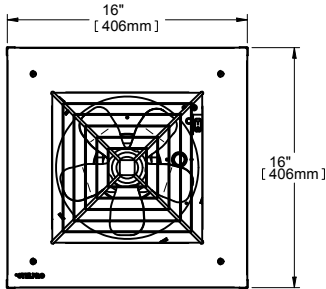
# TECHNICAL DRAWINGS

## DRI MODEL

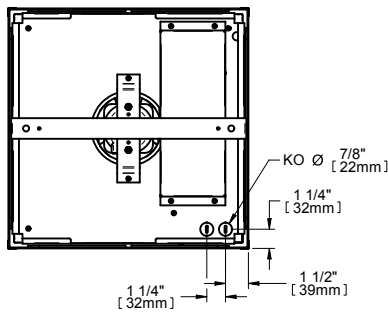
surface mounted



FRONT



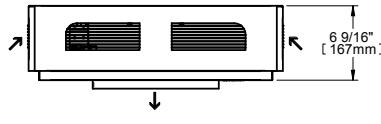
TOP



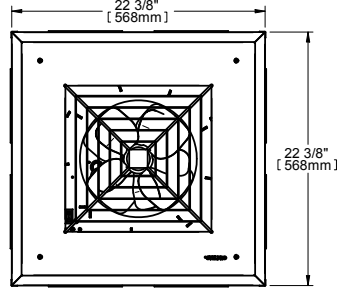
BOTTOM

## DRII MODEL

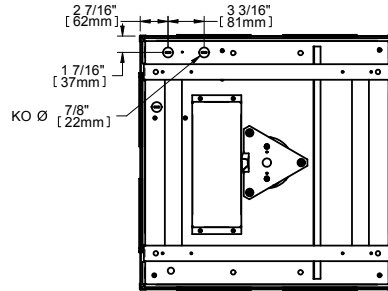
surface mounted



FRONT



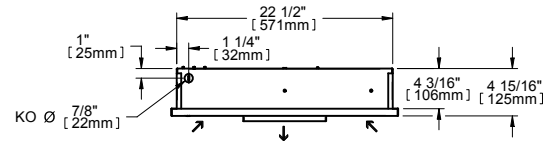
TOP



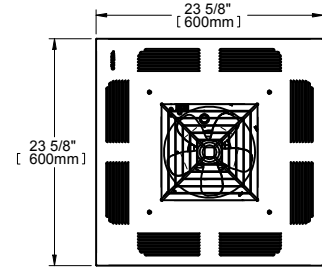
BOTTOM

## DRR MODEL

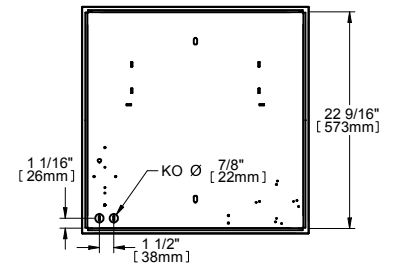
recessed



FRONT



TOP



BOTTOM

## THROW DISTANCE AND HEAT RISE

MODEL	UNITS	THROW DISTANCE		HEAT RISE	
		M	FT	°C	°F
DRI	2	7	23	22	40
	3	7	23	25	45
	4	7	23	33	60
	5	7	23	40	72
	7.5	9.1	30	42	76
DRII	2	7	23	21	38
	3	7	23	31	56
	4	7	23	41	74
	5	7	23	44	79
	10	9.1	30	59	106
DRR	2	7	23	16	29
	3	7	23	18	32
	4	7	23	30	53
5	7	23	38	68	

## ACCESSORIES

PRODUCT	DESCRIPTION	PRICE
<b>DRT1</b>	built-in tamper-proof single pole thermostat (DRR, DRI or DRII models)	<b>59.25</b>
<b>DRITBA1*</b>	T-bar adapter (DRI models)	<b>120.00</b>
<b>DRIITBA1*</b>	T-bar adapter (DRII models)	<b>126.00</b>
<b>DRC24RX*</b>	relay kit without transformer 24 V (DRII or DRR models)	<b>136.00</b>
<b>DRIC24RX*</b>	relay kit without transformer 24 V (DRI models)	<b>143.00</b>

\* Add W for white or SW for soft white.

\* Factory installed