

ASCH

PORTABLE MULTIPURPOSE HEATER



EFFICIENT, SAFE AND VERSATILE

Any construction worker will tell you that the ASCH is the fast-acting heating unit most often found on construction sites, hence its nickname: "the construction heater." Housed in a 20-gauge steel casing, it features a rugged protective grille and nichrome element for instant heat at start-up. Despite its small size, this heating powerhouse boasts 4800 W. The ASCH can be placed on the ground or against a wall, using a support bracket, available as an option. This heater is right at home, on construction sites and in workshops and garages. Choose the ASCH when you need rapid, reliable heat.

- **SAFE AND RUGGED**
20-GAUGE STEEL
- **"COOL TOUCH" HOUSING**
- **4800 W HOUSED IN A SMALL UNIT**
- **OPEN COIL GENERATES INSTANT HEAT**
- **CAN BE INSTALLED ON THE WALL OR CEILING WITH A MOUNTING BRACKET (SOLD SEPARATELY)**

COLORS

- **standard:** red

FINISH

- epoxy-polyester powdercoat

MANUFACTURING

- 20-gauge steel cabinet
- sturdy handle for portability that also serves as cord rack and which adapts to the mounting bracket
- 6 ft. (2 m) 12 Awg. molded cable with 3-prong grounded
- thermal protection with automatic reset
- additional thermal protection provided by a fuse-link (must be replaced if triggered)
- pilot lights indicate when power is on and when thermal protection has been activated

MOTOR

- 250 CFM fan

ELEMENT

- nichrome element ensuring increased comfort
- cone-shaped to concentrate the air around the element

CONTROL

- built-in thermostat with control knob protector

INSTALLATION

- connects to a standard 30 A 250 V (ASCH48T) or a 20 A 250 V (ASCH40T) grounded receptacle
- mounting bracket (sold separately) that can rotate at 360° while preventing the unit from tipping

WARRANTY

- two years

IDEAL FOR:

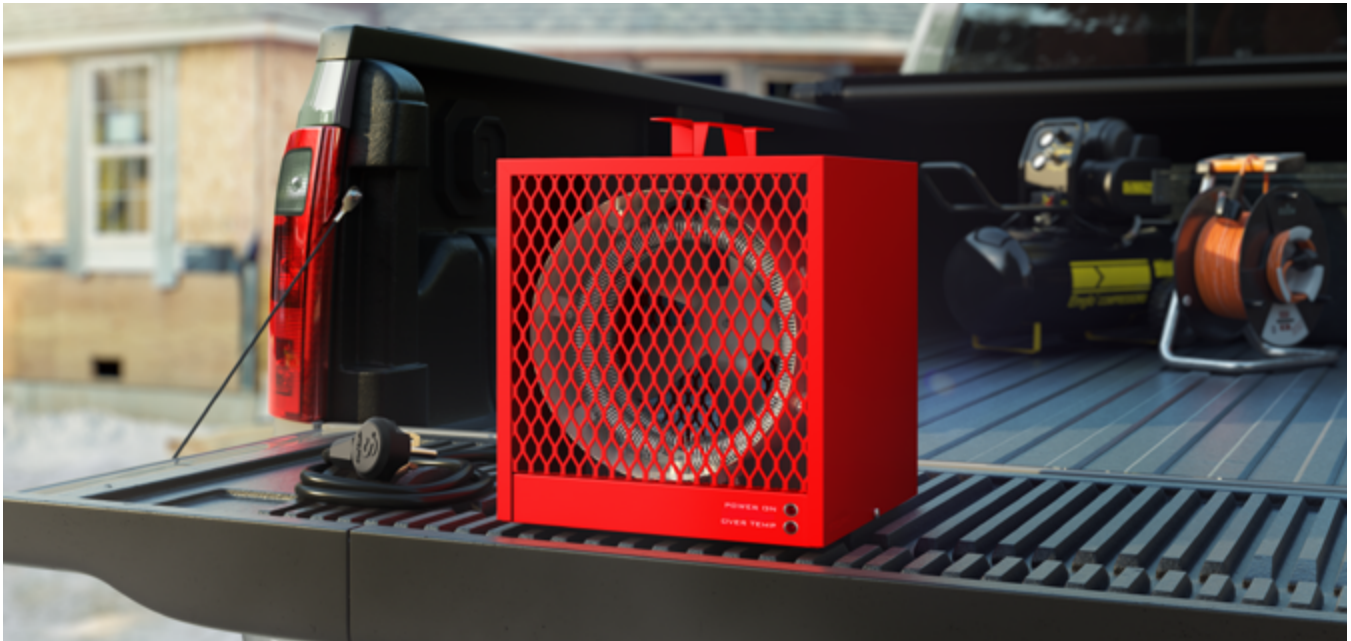
construction site, garages

°STELPRO

Stelpro reserves the right to modify descriptions, manufacturing specifications or prices without prior notice. No returns accepted on optional-color products. For all the latest models and prices, please refer to our website at www.stelpro.com.



FC_SCH_US_020623



TECHNICAL SPECIFICATIONS

PRODUCT	POWER		VOLTAGE	MOTOR	CONNECTION	COLOR	WEIGHT
CODE	WATTS	BTU/H	VOLTS	CFM			LB
ASCH40T	4000/3000	13 651	240/208	250	20 A 250 V plug	red	13
ASCH48T	4800/3600	16 381	240/208	250	30 A 250 V plug	red	13

ACCESSORY

PRODUCT	DESCRIPTION
SCH-WBB	mounting bracket

THROW DISTANCE AND HEAT RISE

MODEL	UNITS	THROW DISTANCE	HEAT RISE
	KW	FT	°F
ASCH40T	4	19'4"	51
ASCH48T	4.8	19'4"	61

TECHNICAL DRAWINGS

