

ASHDLPBH76

HAIR DRYER



POWER FROM EVERY ANGLE

The ASHDLPBH76 series hair dryers, designed to be surface mounted onto the wall, are constructed from a one-piece ultra-resistant shell. They are equipped with a push button and a 360° directional air nozzle, making it just as easy to dry your hands as it is to dry your hair.

360° DIRECTIONAL AIR NOZZLE!

PUSH BUTTON CONTROLLED START-UP



COLORS

- **standard:** white
- **luxurious finish:** chrome (surcharge)

FINISH

- epoxy-polyester powdercoat or chrome finish

MANUFACTURING

- one-piece ultra-resistant shell with rounded sides, reinforced with zinc alloy
- lightweight, heavy duty and rust-proof with a zinc alloy push button in a chrome finish
- zinc alloy 360° directional air nozzle in a chrome finish

ELEMENT

- nichrome element

CONTROL

- push button controls the startup, lasting 90 seconds, controlled by a sealed electronic timer

INSTALLATION

- wall mounted

WARRANTY

- five years, *three years on electronic components

TECHNICAL SPECIFICATIONS

PRODUCT	POWER	VOLTAGE	AMPERAGE	WEIGHT
CODE	WATTS	VOLTS	AMPERES	LB
ASHDLPBH761	2000	120	20	18
ASHDLPBH768	2000	208	10	18
ASHDLPBH762	2000	240	10	18

Add W for white or CH for chrome.





STELPRO

Stelpro reserves the right to modify descriptions, manufacturing specifications or prices without prior notice. Returns are not accepted for orders of products with optional colors. For all the latest models and prices, please refer to our website at www.stelpro.com.



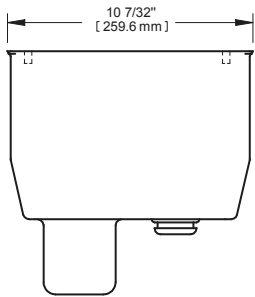
FC_SHDLPBH76_US_280420



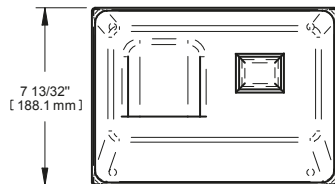
IDEAL FOR	ENERGY SAVINGS	AIR SPEED OR AIR FLOW	HEATING POWER	NOISE LEVEL	DRYING TIME
sports centers, swimming pools and arenas	---				

RECOMMENDED INSTALLATION HEIGHTS				
MEN	WOMEN	TEENAGERS	CHILDREN	HANDICAPPED
DISTANCE BETWEEN FLOOR AND BOTTOM OF HAIR DRYER				
64 in.	58 in.	56 in.	43 in.	45 in.
DISTANCE BETWEEN FLOOR AND BOTTOM OF HAND DRYER				
40 in.	38 in.	36 in.	30 in.	32 in.

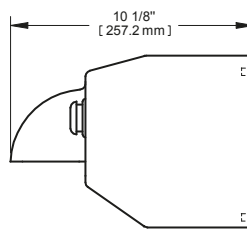
TECHNICAL DRAWINGS



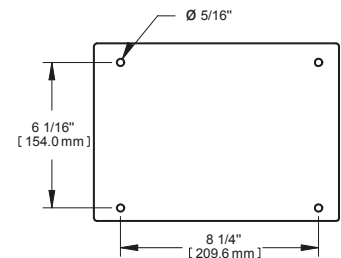
TOP



FRONT



SIDE



BACK