

RELAY INSTALLATION

RM120T/RM240T/RM277T/RM347T SERIES

WARNING

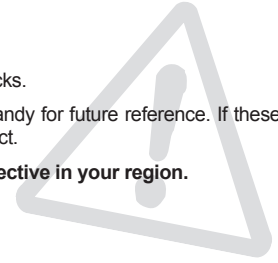
The following instructions must be adhered to in order to avoid personal and serious injury, property damage and potentially fatal electric shocks.

Before installing and operating this product, the user and/or installer must read, understand and follow these instructions and keep them handy for future reference. If these instructions are not followed, the warranty will be considered null and void and the manufacturer deems no further responsibility for this product.

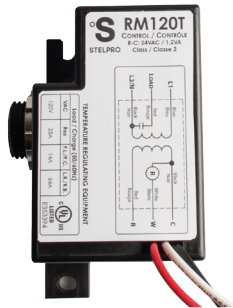
IMPORTANT: This product must be installed and connected by a certified electrician, according to electrical and building codes effective in your region.

Switch off the power at the circuit breaker/fuse before installing, repairing and cleaning the unit.

Make sure the unit is appropriate for the intended use (if needed, refer to the product catalog or a representative).



To obtain the complete relay installation procedure of a particular product, go to www.stelpro.com/pro and to the product page. The installation procedure may be found under the "ACCESSORIES INSTALLATION GUIDE" tab.



RM120T

ARCHITECTURAL CABINET

Perfect for large spaces

The CW750 architectural cabinet convector is the first in our collection of high watt-density heaters. With its contemporary style, this heater is a great option for locations requiring large heat capacities where a forced-air unit just won't do. Showrooms, museums and classrooms, are all examples of large areas generally requiring units offering larger heating capacities, and also areas intolerant to noise.

- USER'S GUIDE
- TECHNICAL DRAWINGS
- SHOP DRAWINGS
- ACCESSORIES INSTALLATION GUIDE
- PARTS**

Important points for installation and use

- Connect the relay in accordance with the installation guide available online.
- Make sure to follow the relay specifications.
- This product is not intended for fast cycling modulation. For fast cycling modulation, please use the RE series from Stelpro, which is an electronic relay series.
- Never replace the unit's relay with a non-certified relay.
- For additional information, please contact our customer service.

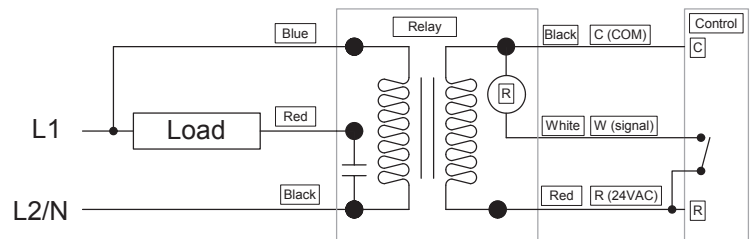
SPECIFICATIONS

Operating temperature: -30°C to 65°C
 Storage temperature: -30°C to 65°C

CONTROL SPECIFICATIONS

R-C: 24VAC / 1.2VA
 R-C: 20VAC / 2.4VA
 Class 2
 W: 75mA required to close the relay

TYPICAL WIRING DIAGRAM



LOAD SPECIFICATIONS

MODEL	VOLTAGE (VAC)	PURELY RESISTIVE LOAD CURRENT (A)	FULL LOAD AMPERAGE (FLA)	LOCKED ROTOR AMPERAGE (LRA)
RM120T	120	25	14	84
RM240T	208/240	25	8	48
RM277T	277	25	8	48
RM347T	347	18		