

HIGH-END BASEBOARD | BA SERIES RELAY INSTALLATION

RE153 - RE156 SERIES

JUNCTION BOX INSTALLATION AND WIRING - LEFT SIDE ONLY

⚠ WARNING

Before installing and operating this product, the user and/or installer must read, understand and follow these instructions and keep them handy for future reference. If these instructions are not followed, the warranty will be considered null and void and the manufacturer deems no further responsibility for this product. The following instructions must be adhered to in order to avoid personal and serious injuries, property damages and potentially fatal electric shocks. Switch off the power at the circuit breaker/fuse before installing, repairing and cleaning the unit. Make sure the unit is appropriate for the intended use (if needed, refer to the product catalog or a representative).

1. Remove the front cover of the baseboard. To do this remove the two screws at the extremities of the unit and pull the cover out and upwards.
2. Remove the plastic protectors from both sides of the voltage separator supplied. FIG. 1
3. Position the voltage separator horizontally in the middle of the junction box. FIG. 2
4. Position the relay on top of the voltage separator (with the arrow pointing towards the top of the box) and install with screws. FIG. 3
5. Pass the black wires (power wires) of the relay in the C opening of the voltage separator. FIG.4 opening C
6. Insert the control wires supplied by the installer into the baseboard electrical box through one of the knock outs (KOE, A opening). Connect the low voltage wires with the relay wires using an appropriate wire nut. For the connections, refer to the diagram included with the relay.
7. Connect one of the black wires of the relay to the wire coming from wireway (at the bottom of the unit) using a wire nut. FIG. 5
8. Connect the other black wire of the relay to a line feed (L1) using a wire nut. FIG. 6
9. Connect the wire from the element to the other line feed (L2/N) using a wirenut.
10. Close the cover, making sure the wires are well positioned.



FIG. 1

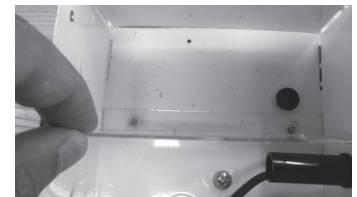


FIG. 2

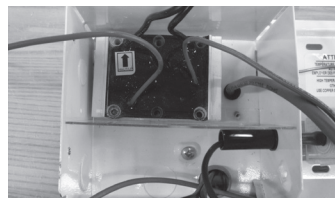


FIG. 3

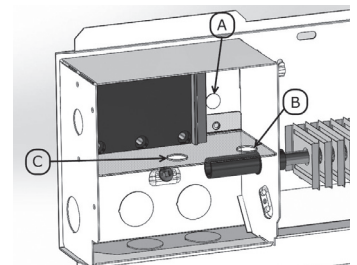


FIG. 4

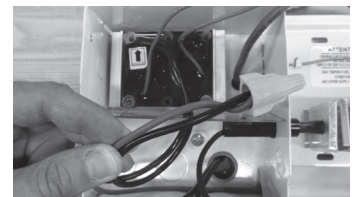


FIG. 5

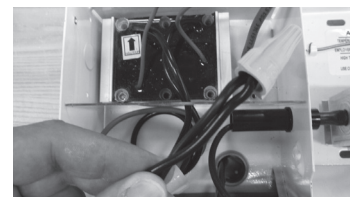
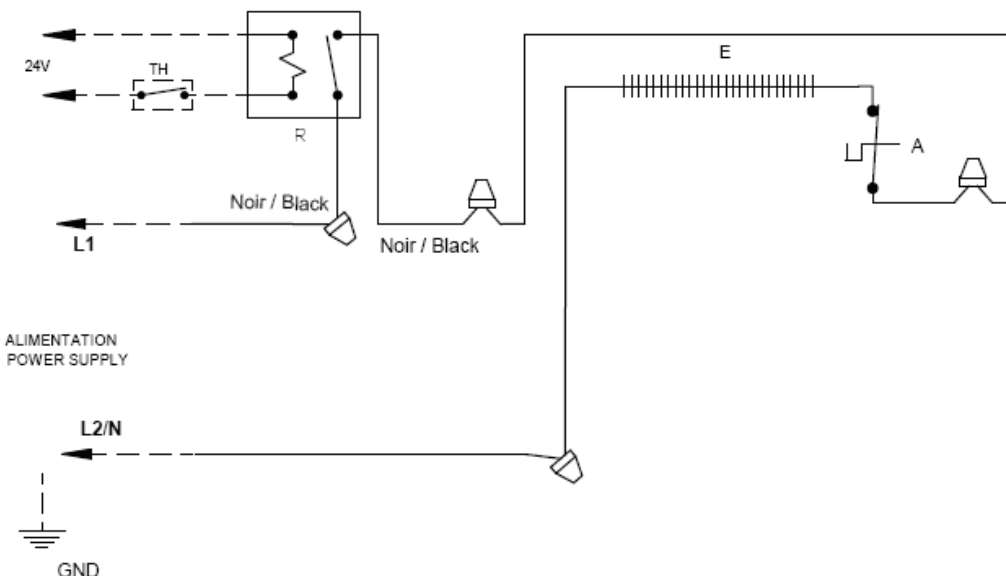


FIG. 6



⚠ WARNING

Before installing and operating this product, the user and/or installer must read, understand and follow these instructions and keep them handy for future reference. If these instructions are not followed, the warranty will be considered null and void and the manufacturer deems no further responsibility for this product. The following instructions must be adhered to in order to avoid personal and serious injuries, property damages and potentially fatal electric shocks. Switch off the power at the circuit breaker/fuse before installing, repairing and cleaning the unit. Make sure the unit is appropriate for the intended use (if needed, refer to the product catalog or a representative).

1. Remove the front cover of the baseboard. To do this remove the two screws at the extremities of the unit and pull the cover out and upwards.
2. Remove the plastic protectors from both sides of the voltage separator supplied. FIG. 1
3. Position the voltage separator horizontally in the middle of the junction box. FIG. 2
4. Position the relay on top of the voltage separator (with the arrow pointing towards the top of the box) and install with screws. FIG. 3
5. Pass the black wires (power wires) of the relay in the opening of the voltage separator.
6. Insert the control wires supplied by the installer into the baseboard electrical box through one of the knock outs (KOE). Connect the low voltage wires with the blue relay wires (control side) using an appropriate wire nut. For the connections refer to the diagram included with the relay.
7. Connect the wire coming out the wireway to the line feed (L2/N) (at the bottom of the unit) using a wire nut.
8. Connect the black wire of the relay to a line feed wire (L1) by using an appropriate wire nut. FIG. 4
9. Disconnect the wire with a connector on the thermal protection, pass it through the hole of the voltage separator (opening C), slip on the white sleeve supplied with the kit to isolate the connector and reconnect the wire. FIG. 5
10. Pass the other wire of the thermal protection through the hole of the voltage separator and connect it to the other black wire of the relay (L2/N) by using an appropriate wire nut.
11. Close the cover, making sure the wires are well positioned.



FIG. 1



FIG. 2

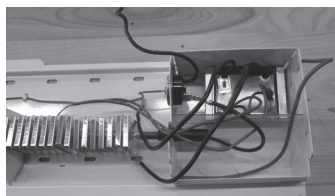


FIG. 3

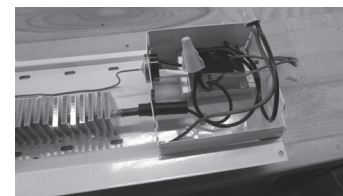


FIG. 4

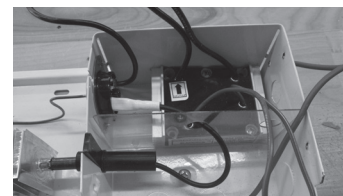
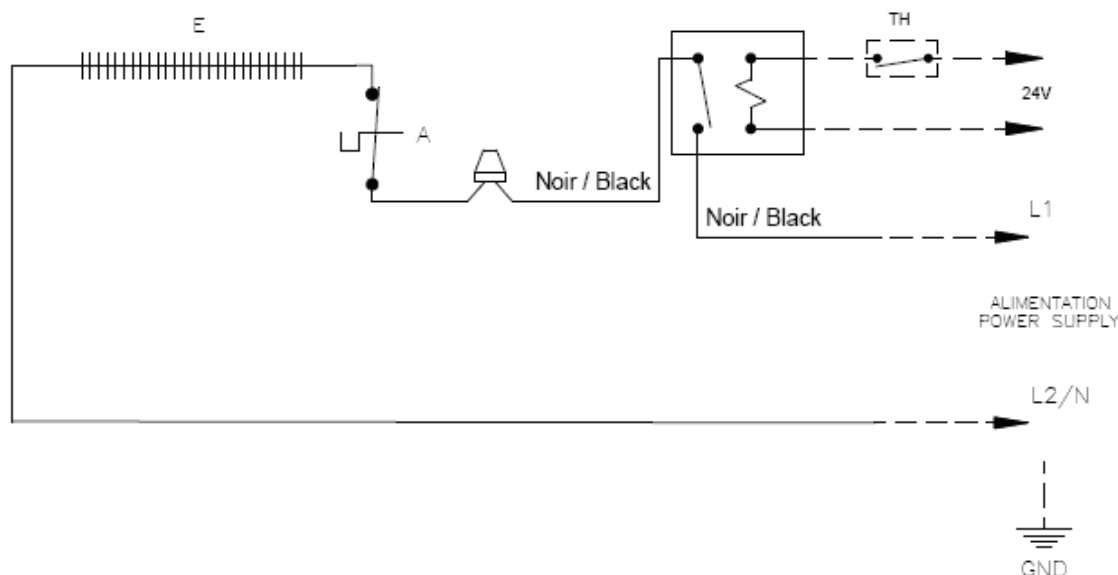


FIG. 5



⚠ WARNING

Before installing and operating this product, the user and/or installer must read, understand and follow these instructions and keep them handy for future reference. If these instructions are not followed, the warranty will be considered null and void and the manufacturer deems no further responsibility for this product. The following instructions must be adhered to in order to avoid personal and serious injuries, property damages and potentially fatal electric shocks. Switch off the power at the circuit breaker/fuse before installing, repairing and cleaning the unit. Make sure the unit is appropriate for the intended use (if needed, refer to the product catalog or a representative).

1. Remove the front cover of the baseboard. To do this remove the two screws at the extremities of the unit and pull the cover out and upwards.
2. Remove the plastic protectors from both sides of the voltage separator supplied. FIG. 1
3. Position the voltage separator horizontally in the middle of the junction box. FIG. 2
4. Position the relay on top of the voltage separator (with the arrow pointing towards the top of the box) and install with screws. FIG. 3
5. Pass the black, blue and white wires (power wires) of the relay in the opening of the voltage separator. FIG. 4 opening C
6. Insert the control wires supplied by the installer into the baseboard electrical box through one of the knock outs (KOE), FIG. 4 opening A. Connect the low voltage wires with the black, red and white relay wires using the appropriate wire nut. Refer to the wiring diagram included with the relay for the different options.
7. Connect the blue relay wire with the wire that comes from the wireway (bottom of the unit) by using an appropriate wire nut. FIG. 5
8. Connect the white relay wire (power side) of the relay to the wire of the element and a line feed wire (L2/N) by using an appropriate wire nut. FIG. 6
9. Connect the black relay wire (power side) to the other wire coming from the line feed (L1) by using an appropriate wire nut. FIG. 7
10. Close the junction box and replace the cover, making sure the wires are well positioned.



FIG. 1



FIG. 2

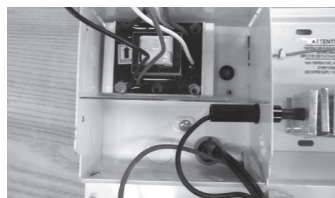


FIG. 3

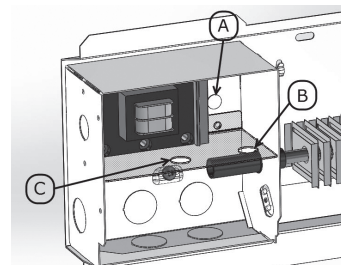


FIG. 4

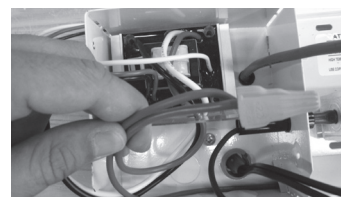


FIG. 5



FIG. 6

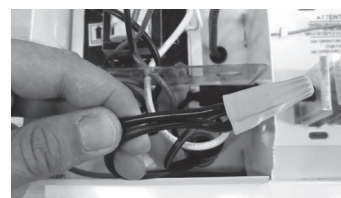
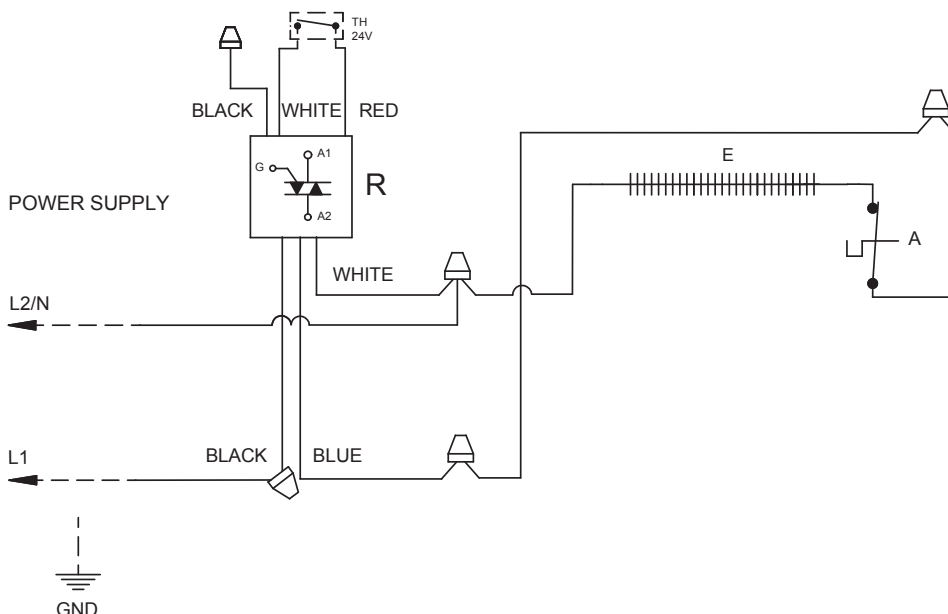


FIG. 7



⚠ WARNING

Before installing and operating this product, the user and/or installer must read, understand and follow these instructions and keep them handy for future reference. If these instructions are not followed, the warranty will be considered null and void and the manufacturer deems no further responsibility for this product. The following instructions must be adhered to in order to avoid personal and serious injuries, property damages and potentially fatal electric shocks. Switch off the power at the circuit breaker/fuse before installing, repairing and cleaning the unit. Make sure the unit is appropriate for the intended use (if needed, refer to the product catalog or a representative).

1. Remove the front cover of the baseboard. To do this remove the two screws at the extremities of the unit and pull the cover out and upwards
2. Remove the plastic protectors from both sides of the voltage separator supplied. FIG. 1
3. Position the voltage separator horizontally in the middle of the junction box. FIG. 2
4. Position the relay on top of the voltage separator (with the arrow pointing towards the top of the box) and install with screws. FIG. 3
5. Pass the black, blue and white wires(power wires) of the relay in the opening of the voltage separator FIG. 4
6. Insert the control wires supplied by the installer into the baseboard electrical box through one of the knock outs (KOE). Connect the low voltage wires with the black, red and white relay wires using using the appropriate wire nut. Refer to the wiring diagram included with the relay for the different options.
7. Connect the blue relay wire with the wire that comes out of the wire way (at the bottom of the unit) by using an appropriate wire nut. FIG. 5
8. Connect the white relay wire (power side) to the thermal protection wire and a line feed (L2/N) wire by using an appropriate wire nut.
9. Disconnect the wire with a connector on the thermal protection, pass it through the hole of the voltage separator, FIG. 6, put the white sleeve supplied with the kit to isolate the connector and reconnect the wire.
10. Connect the black relay wire (power side) to the other wire coming from the line feed (L1) by using an appropriate wire nut.
11. Close the junction box and replace the cover, making sure the wires are well positioned.



FIG. 1



FIG. 2

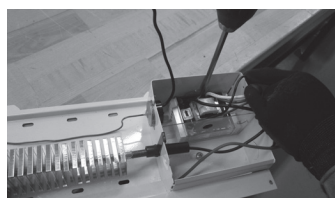


FIG. 3



FIG. 4

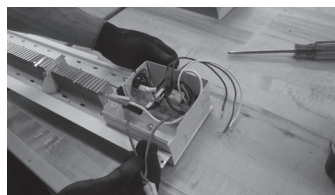
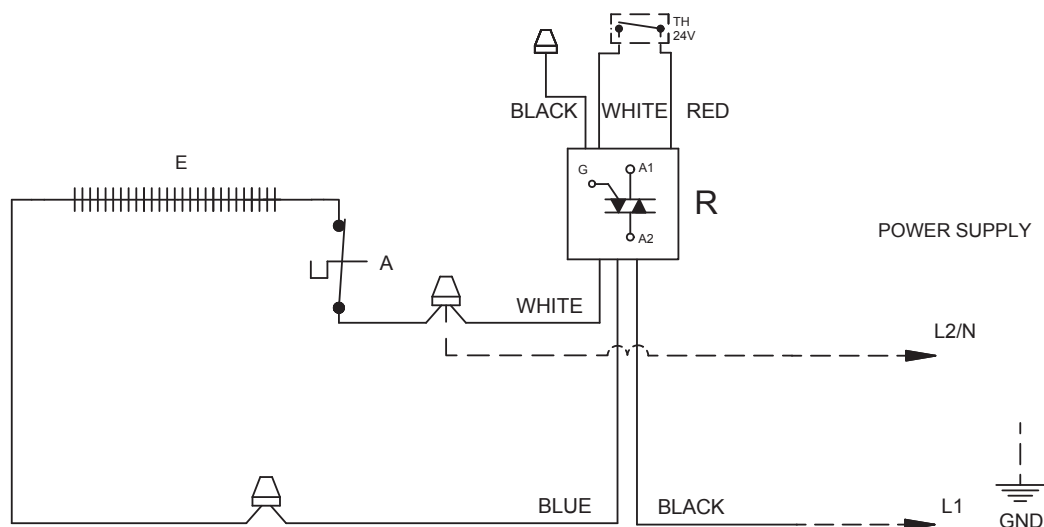


FIG. 5



FIG. 6



RELAY INSTALLATION

R841 SERIES WITH TRANSFORMER

JUNCTION BOX INSTALLATION AND WIRING - LEFT SIDE ONLY



WARNING

Before installing and operating this product, the user and/or installer must read, understand and follow these instructions and keep them handy for future reference. If these instructions are not followed, the warranty will be considered null and void and the manufacturer deems no further responsibility for this product. The following instructions must be adhered to in order to avoid personal and serious injuries, property damages and potentially fatal electric shocks. Switch off the power at the circuit breaker/fuse before installing, repairing and cleaning the unit. Make sure the unit is appropriate for the intended use (if needed, refer to the product catalog or a representative).

1. Remove the front cover of the baseboard. To do this remove the two screws at the extremities of the unit and pull the cover out and upwards.
2. Remove the plastic protectors from both sides of the voltage separator supplied. FIG. 1
3. Insert the voltage separator on the relay and screw with the ring nut supplied. FIG. 2
4. Position the relay in the top of the junction box (separator on the bottom) and install with screws. FIG.3
5. Insert the control wires supplied by the installer into the baseboard electrical box through one of the 3/8 inch knock outs (KOE). Connect the low voltage wires with the red and white relay wires using the appropriate wire nut. Refer to the diagram included with the relay for the different options.
6. Connect the red wire of the relay (power side) to the wire coming out the wireway (at the bottom of the unit) by using an appropriate wire nut.
7. Connect the black relay wire (power side) to the wire coming from the line feed (L2/N) by using an appropriate wire nut. FIG. 4)
8. Connect the blue/orange wire of the relay to the second line feed (L1) and to the wire of the heating element. FIG. 5
9. Close the junction box and replace the cover, making sure the wires are well placed inside the box.

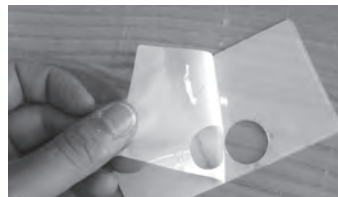


FIG. 1



FIG. 2



FIG. 3



FIG. 4

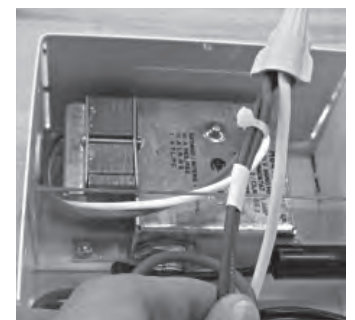
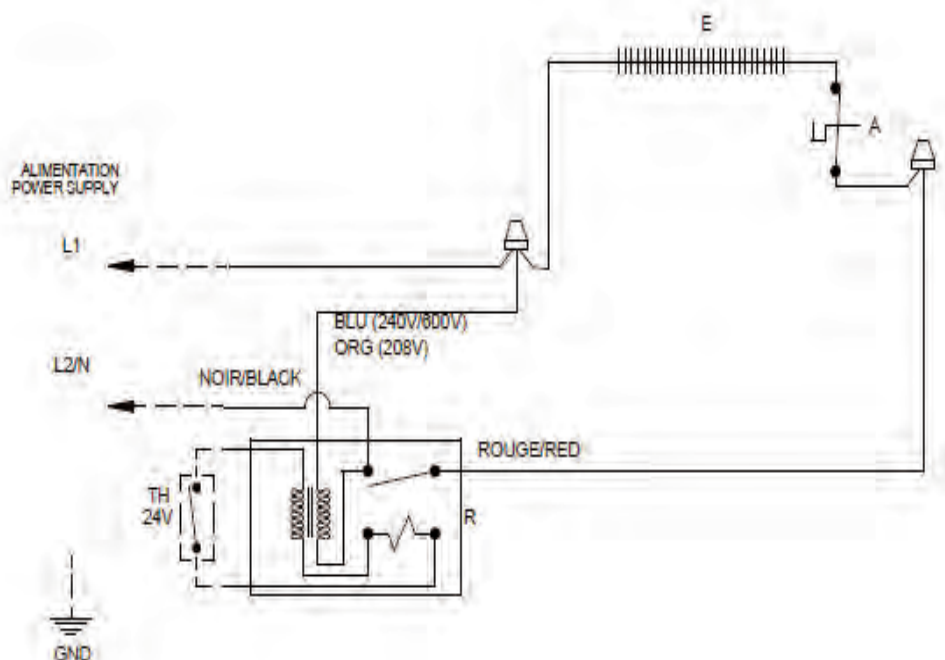


FIG. 5





WARNING

Before installing and operating this product, the user and/or installer must read, understand and follow these instructions and keep them handy for future reference. If these instructions are not followed, the warranty will be considered null and void and the manufacturer deems no further responsibility for this product. The following instructions must be adhered to in order to avoid personal and serious injuries, property damages and potentially fatal electric shocks. Switch off the power at the circuit breaker/fuse before installing, repairing and cleaning the unit. Make sure the unit is appropriate for the intended use (if needed, refer to the product catalog or a representative).

1. Remove the front cover of the baseboard. To do this remove the two screws at the extremities of the unit and pull the cover out and upwards.
2. Remove the plastic protectors from both sides of the voltage separator supplied. FIG. 1
3. Insert the voltage separator on the relay and screw with the ring nut supplied. FIG. 2
4. Position the relay in the top of the junction box (separator on the bottom) and install with screws. FIG. 3
5. Connect the blue/orange wire of the relay to the wire of the heating element and the wire coming out the wireway by using an appropriate wire nut. FIG. 4
6. Connect a black wire supplied by the installer to the black wire of the relay and make it go through the wireway to the right junction box. FIG. 5
7. Connect the red wire of the relay (power wire) to a red wire supplied by the installer and pass it through the wireway to the right junction box, FIG. 6. Then, connect this wire to the wire of the thermal protection. FIG. 7
8. Connect the wires supplied by the installer (red and white) to the control wires of the relay and pass them through the hole of the voltage separator, then pass them through the wireway to the right junction box. FIG. 8
9. Insert the control wires supplied by the installer into the right electrical box through one of the 3/8 inch knock outs (KOE). Then, insert these wires into the hole of the second voltage separator. Connect the low voltage wires with the relay wires using the appropriate wire nut. Refer to the wiring diagram included with the relay for the different options.
10. Connect the black wire in the right junction box to the line feed (L2/N) and the red wire in the right junction box to the other line feed (L1).
11. Close the junction box and replace the cover, making sure the wires are well placed inside the box.



FIG. 1



FIG. 2



FIG. 3



FIG. 4



FIG. 5



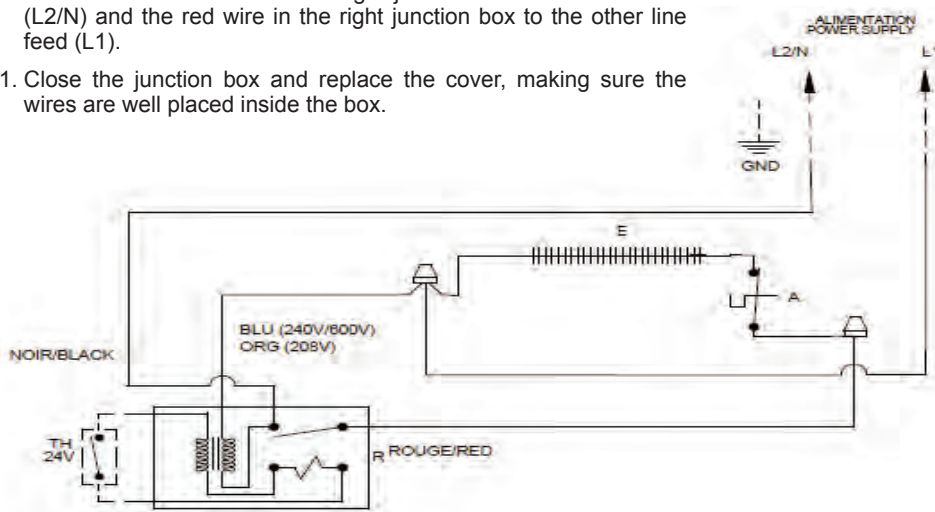
FIG. 6



FIG. 7



FIG. 8



HIGH-END BASEBOARD | BA SERIES RELAY INSTALLATION

R841 SERIES WITHOUT TRANSFORMER JUNCTION BOX INSTALLATION AND WIRING - LEFT SIDE ONLY



WARNING

Before installing and operating this product, the user and/or installer must read, understand and follow these instructions and keep them handy for future reference. If these instructions are not followed, the warranty will be considered null and void and the manufacturer deems no further responsibility for this product. The following instructions must be adhered to in order to avoid personal and serious injuries, property damages and potentially fatal electric shocks. Switch off the power at the circuit breaker/fuse before installing, repairing and cleaning the unit. Make sure the unit is appropriate for the intended use (if needed, refer to the product catalog or a representative).

1. Remove the front cover of the baseboard. To do this remove the two screws at the extremities of the unit and pull the cover out and upwards.
2. Remove the plastic protectors from both sides of the voltage separator supplied. FIG. 1
3. Insert the voltage separator on the relay and screw with the ring nut supplied. FIG. 2
4. Position the relay in the top of the junction box (separator on the bottom) and install with screws. FIG. 3
5. Insert the control wires supplied by the installer into the baseboard electrical box through one of the 3/8 inch knock outs (KOE). Connect the low voltage wires with the red and white relay wires (control side) using the appropriate wire nut. Refer to the wiring diagram included with the relay for the different options. FIG. 3
6. Connect the red wire of the relay (power side) to the heating element wire by using an appropriate wire nut. FIG. 4
7. Connect the black wire of the relay (power side) with the line feed (L2/N) by using an appropriate wire nut. FIG. 5
8. Connect the wire coming out of the wireway with (L1). Use the appropriate wire nuts.
9. Close the junction box and replace the cover, making sure the wires are positioned properly.



FIG. 1



FIG. 2



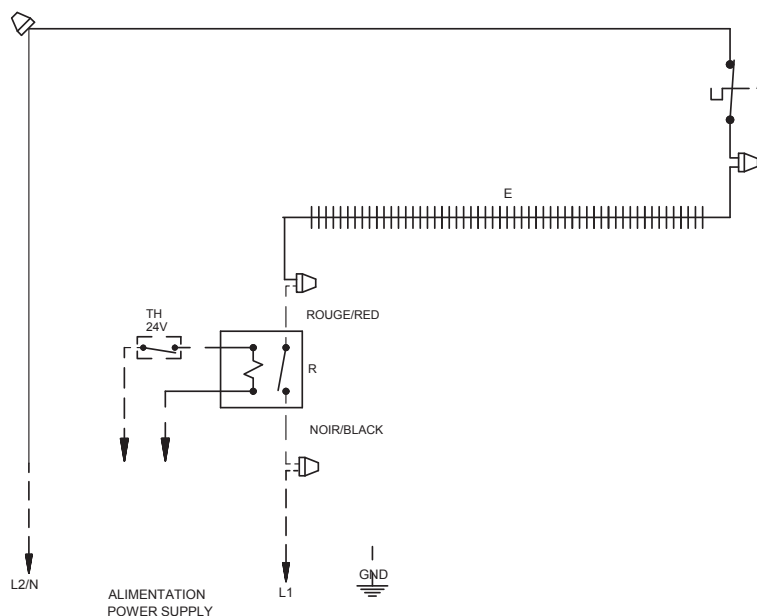
FIG. 3



FIG. 4



FIG. 5



HIGH-END BASEBOARD | BA SERIES RELAY INSTALLATION

R841 SERIES WITHOUT TRANSFORMER

JUNCTION BOX INSTALLATION AND WIRING - LEFT SIDE WITH CONNECTION ON RIGHT SIDE



WARNING

Before installing and operating this product, the user and/or installer must read, understand and follow these instructions and keep them handy for future reference. If these instructions are not followed, the warranty will be considered null and void and the manufacturer deems no further responsibility for this product. The following instructions must be adhered to in order to avoid personal and serious injuries, property damages and potentially fatal electric shocks. Switch off the power at the circuit breaker/fuse before installing, repairing and cleaning the unit. Make sure the unit is appropriate for the intended use (if needed, refer to the product catalog or a representative).

1. Remove the front cover of the baseboard. To do this remove the two screws at the extremities of the unit and pull the cover out and upwards.
2. Remove the plastic protectors from both sides of the voltage separator supplied. FIG. 1
3. Insert the voltage separator on the relay and screw with the ring nut supplied. FIG. 2
4. Position the relay in the top of the junction box (separator on the bottom) and install with screws..
5. Insert the control wires supplied by the installer into the baseboard electrical box through one of the 3/8 inch knock outs (KOE). Then, pass these wires through the wireway and insert them through the voltage separator hole. Connect the low voltage wires with the relay wires using a wire nut. Refer to the diagram included with the relay for the different options.
6. Connect the red relay wires to the heating element wire in the left junction box and the other black wire to the wire coming out the wireway.
7. Connect the wire coming out the wireway to the black wire of the relay.
8. Connect the black wire of the thermal protection to the line feed (L2/N) by using an appropriate wire nut.
9. Close the junction box and replace the cover, making sure the wires are positioned properly.



FIG. 1



FIG. 2

