

# BUILT-IN THERMOSTAT INSTALLATION

## SHUT1 SERIES SINGLE POLE THERMOSTAT

### WARNING

Before installing and operating this product, the user and/or installer must read, understand and follow these instructions and keep them handy for future reference. If these instructions are not followed, the warranty will be considered null and void and the manufacturer deems no further responsibility for this product. The following instructions must be adhered to in order to avoid personal and serious injuries, property damages and potentially fatal electric shocks. Switch off the power at the circuit breaker/fuse before installing, repairing and cleaning the unit. Make sure the unit is appropriate for the intended use (if needed, refer to the product catalog or a representative).

1. Remove access cover to control box of heater.
2. Install the thermostat on the bracket. FIG. 1
3. Connect the two black wires supplied with the kit to the thermostat terminal. FIG. 2
4. Pass the capillary bulb through the bushing and put the plastic bushing on the hole. FIG. 3
5. Hold the bulb in place with plastic strapping which locks itself on the hole. FIG. 4
6. Install thermostat bracket on holes provided. Use the screws (2) provided with the kit. FIG. 5
7. Connect one black wire from the thermostat into the terminal block C and the other black wire into the terminal block 1, see electrical diagram. FIG. 6
8. Reinstall access cover to control box.

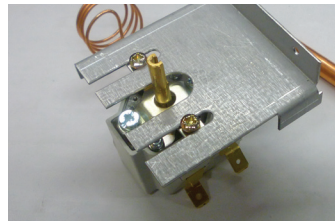


FIG. 1

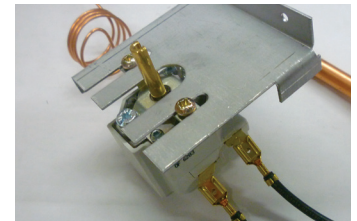


FIG. 2



FIG. 3

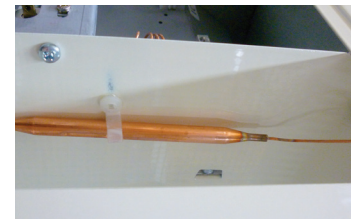


FIG. 4

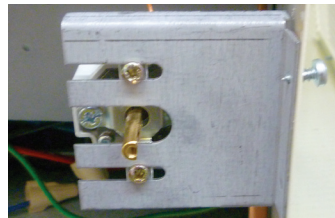


FIG. 5

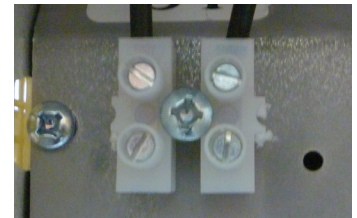
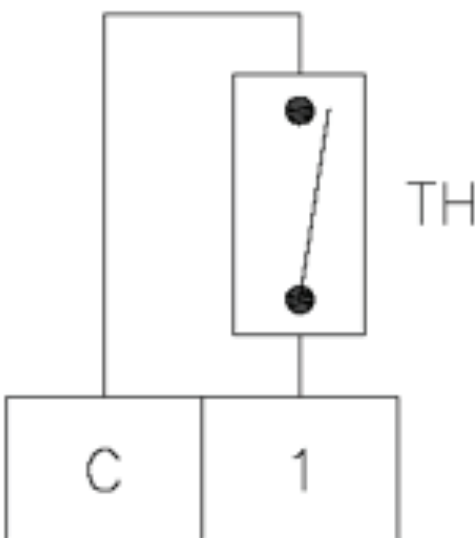


FIG. 6



# BUILT-IN THERMOSTAT INSTALLATION

## SHUT2 SERIES DOUBLE POLE THERMOSTAT

### WARNING

Before installing and operating this product, the user and/or installer must read, understand and follow these instructions and keep them handy for future reference. If these instructions are not followed, the warranty will be considered null and void and the manufacturer deems no further responsibility for this product. The following instructions must be adhered to in order to avoid personal and serious injuries, property damages and potentially fatal electric shocks. Switch off the power at the circuit breaker/fuse before installing, repairing and cleaning the unit. Make sure the unit is appropriate for the intended use (if needed, refer to the product catalog or a representative).

1. Remove access cover to the control box of heater
2. Install the thermostat on the bracket. FIG. 1
3. Install the two black wires provided in the kit on the thermostat's left side. Install the two red wires provided on the thermostat's right side. FIG. 2
4. Pass capillary bulb through the bushing and put the plastic bushing on the hole. FIG. 3
5. Hold the bulb in place with plastic strapping which locks itself on the hole. FIG. 4
6. Install thermostat bracket on holes provided. Use the screws (2) provided with the kit. FIG. 5
7. Connect one black wire from the thermostat to the terminal block C. FIG. 6
8. Connect the black wire to the red wire of the thermostat by using an appropriate connector. FIG. 7
9. Connect the other red wire of the thermostat to the terminal block 1, see electrical diagram. FIG. 8
10. Re-install access cover to the control box of heater.



FIG. 1

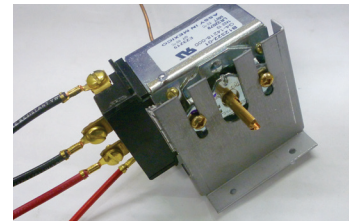


FIG. 2



FIG. 3

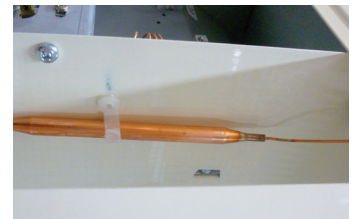


FIG. 4

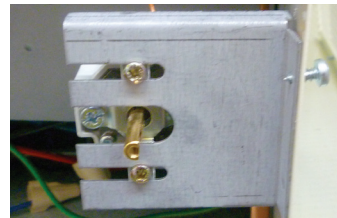


FIG. 5

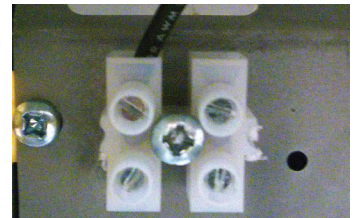


FIG. 6

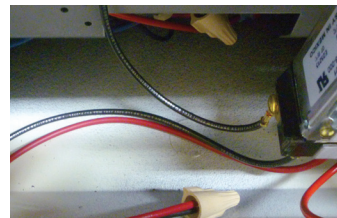


FIG. 7

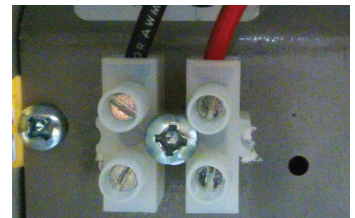


FIG. 8

