

BUILT-IN THERMOSTAT INSTALLATION

T12 SERIES

INSTALLATION ON LEFT SIDE ONLY - POWER ON LEFT SIDE



WARNING

Before installing and operating this product, the user and/or installer must read, understand and follow these instructions and keep them handy for future reference. If these instructions are not followed, the warranty will be considered null and void and the manufacturer deems no further responsibility for this product. The following instructions must be adhered to in order to avoid personal and serious injuries, property damages and potentially fatal electric shocks. Switch off the power at the circuit breaker/fuse before installing, repairing and cleaning the unit. Make sure the unit is appropriate for the intended use (if needed, refer to the product catalog or a representative).

1. Remove the grille.
2. Install the two black electrical conductors on the thermostat using the two screws provided in the kit. FIG. 1
3. Insert the black insulation shrink sleeves on the wires coming off of the thermostat including the screws and heat with a heat source. FIG. 2
4. Install the thermostat on the bracket using two screws provided in the kit and install the bracket in the unit. FIG. 3
5. Using the white strapping supplied in the kit, insert the thermostat bulb and affix it to the housing of the unit using a screw. FIG. 4
6. Connect the black wire from the thermostat to the heating element wire using the appropriate wire nut. FIG. 5
7. Connect the wire coming out of the wireway to power (L2/N) and the other thermostat wire to power wire (L1) according to the wiring diagram below.
8. Punch the knock-out of the grille.
9. Re-install the grille.



FIG. 1



FIG. 2



FIG. 3



FIG. 4

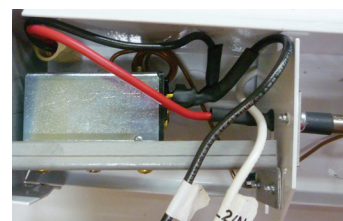
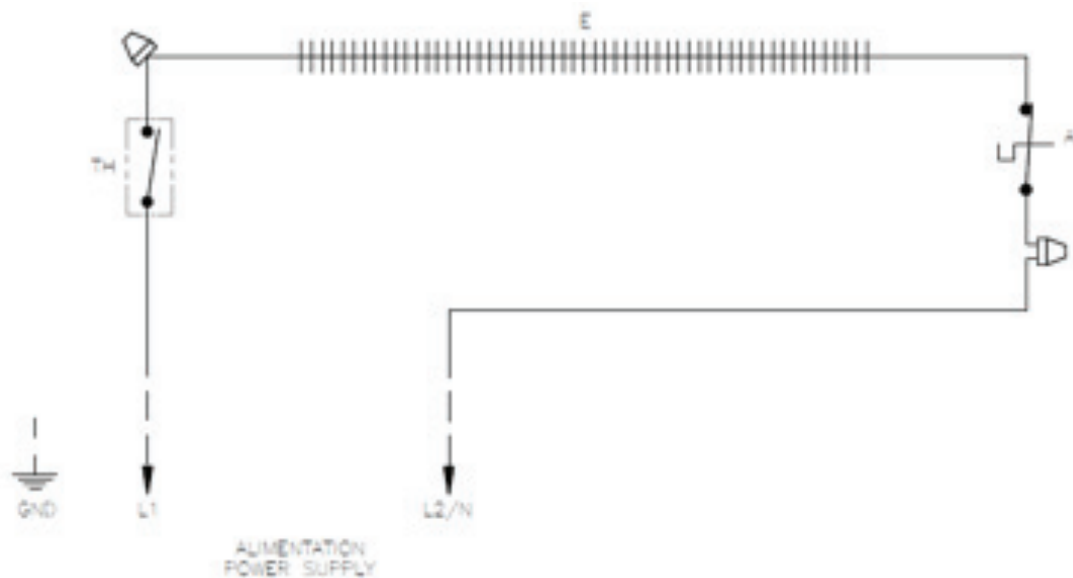


FIG. 5



BUILT-IN THERMOSTAT INSTALLATION

T12 SERIES

INSTALLATION ON LEFT SIDE ONLY - POWER ON RIGHT SIDE



WARNING

Before installing and operating this product, the user and/or installer must read, understand and follow these instructions and keep them handy for future reference. If these instructions are not followed, the warranty will be considered null and void and the manufacturer deems no further responsibility for this product. The following instructions must be adhered to in order to avoid personal and serious injuries, property damages and potentially fatal electric shocks. Switch off the power at the circuit breaker/fuse before installing, repairing and cleaning the unit. Make sure the unit is appropriate for the intended use (if needed, refer to the product catalog or a representative).

1. Remove the grille.
2. Install the two black electrical conductors on the thermostat using the two screws provided in the kit. FIG. 1
3. Insert the black insulation shrink sleeves on the wires coming off of the thermostat including the screws and heat with a heat source. FIG. 2
4. Install the thermostat on the bracket using the two screws provided in the kit and install the bracket in the unit. FIG. 3
5. Using the white strapping supplied in the kit, insert the thermostat bulb and affix it to the housing of the unit using a screw. FIG. 4
6. Connect the black wire from the thermostat to the heating element by using an appropriate wire nut. FIG. 5
7. Connect the wire coming from the wireway to the other thermostat wire by using an appropriate wire nut. FIG. 6
8. Connect the unit according to the wiring diagram below.
9. Punch the knock-out of the grille.
10. Re-install the grille.



FIG. 1



FIG. 2



FIG. 3



FIG. 4

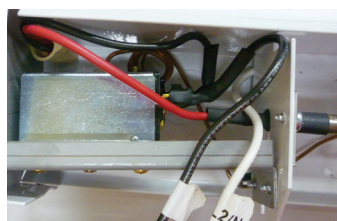


FIG. 5

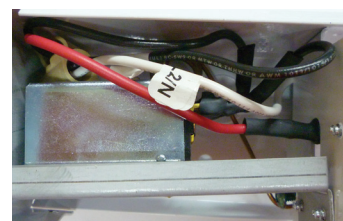


FIG. 6

