



**THE ESSENTIALS**  
**USA CONTRACTOR BOOKLET**  
**JULY, 2023**



# TABLE OF CONTENTS

<b>AMIR - MIRAGE™</b>	<b>4</b>	<b>SSFP</b>	<b>30</b>
CONVECTOR		SELF-REGULATING FREEZE PROTECTION PREASSEMBLED CABLE	
<b>ABA - BELLA™</b>	<b>6</b>	<b>SCRG</b>	<b>31</b>
HIGH-END ALUMINIUM BASEBOARD		CONSTANT WATTAGE ROOF AND GUTTER DE-ICING HEATING CABLE	
<b>ASPR - PRIMA™</b>	<b>8</b>	<b>MUAA</b>	<b>32</b>
HIGH-END BASEBOARD		MAKE-UP AIR UNIT	
<b>AB - BRAVA™</b>	<b>10</b>	<b>SDHx &amp; SDHxT</b>	<b>33</b>
ELECTRIC BASEBOARD		CUSTOM DUCT HEATERS	
<b>ASOA - OASIS™</b>	<b>12</b>	<b>ELN - EL-NIÑO™</b>	<b>34</b>
WALL FAN HEATER		HAND DRYER	
<b>ARWF - PULSAIR™</b>	<b>14</b>	<b>ST302P – ST402P – ST252NP – ST302NP – ST402NP</b>	<b>36</b>
WALL FAN HEATER		ELECTRONIC THERMOSTATS FOR BASEBOARDS AND CONVECTORS	
<b>AWF</b>	<b>16</b>	<b>ST402PFF – ST252NPFF – ST402NPFF</b>	<b>37</b>
WALL FAN HEATER		ELECTRONIC THERMOSTAT FOR FAN HEATERS	
<b>ASK</b>	<b>17</b>	<b>STZW402 - KI™ Z-WAVE</b>	<b>38</b>
CEILING FAN HEATER		ELECTRONIC THERMOSTAT FOR SMART HOME	
<b>ASKS</b>	<b>18</b>	<b>STCP – STCNP</b>	<b>39</b>
KICK SPACE HEATER		FLOOR HEATING ELECTRONIC THERMOSTAT	
<b>SCR - RADIANCE™</b>	<b>20</b>	<b>COMPATIBILITY OF THERMOSTATS AND RELAYS</b>	<b>40</b>
COVE HEATER		<b>LET YOURSELF BE INSPIRED</b>	<b>41</b>
<b>ASIRH - ZENITH™</b>	<b>21</b>	<b>SERIES COMPARISON CHART</b>	<b>42</b>
INFRARED RADIANT HEATER			
<b>ASHU - OXFORD™</b>	<b>22</b>		
COMMERCIAL AND INDUSTRIAL UNIT HEATER			
<b>ARUH - OXFORD™</b>	<b>23</b>		
COMMERCIAL AND RESIDENTIAL UNIT HEATER			
<b>ASGH - SPIDER™</b>	<b>24</b>		
CEILING FAN HEATER			
<b>ASCH</b>	<b>25</b>		
PORTABLE MULTIPURPOSE HEATER			
<b>SCU</b>	<b>26</b>		
UNIVERSAL HEATING CABLE			
<b>SSFR</b>	<b>28</b>		
SELF-REGULATING FREEZE PROTECTION CABLE REEL			

# AMIR - MIRAGE™

## CONVECTOR

**5** YEAR  
WARRANTY



- **BLENDS IN WITH ANY DECOR**
- **STURDY ONE-PIECE FRONT PANEL**
- **TOTALLY QUIET**
- **BUILT-IN ELECTRONIC THERMOSTAT (OPTIONAL)**  
WITH BACKLIT SCREEN

### COLORS

- standard: white, soft white
- Orora (optional): refer to p.41

### FINISH

- epoxy-polyester powdercoat

### MANUFACTURING

- 20-gauge steel cabinet and front
- the cabinet height improves the chimney effect
- bottom air intake and top air discharge

### ELEMENTS

- two stainless steel tubular sheathed elements insulated with nylon sleeves reducing expansion and contraction noises

### CONTROL

(thermostats/relays compatibility: p.40)

- electronic thermostat required:
  - electronic wall thermostat (not included)
  - built-in electronic thermostat with LCD screen (optional)
- automatic temperature lowering at night (Automatic mode)
- maximum temperature setpoint lock option (Security mode)

### INSTALLATION

- surface mounted only
- wall mounted at least 4 in. from the floor
- concealed mounting bracket (included)
- back entry plate with cable clamps (included)

### WARRANTY

- five years, \*three years on electronic components



BUILT-IN THERMOSTAT	PRICE	WITHOUT THERMOSTAT	PRICE	POWER	VOLTAGE	LENGTH	WEIGHT
CODE		CODE		WATTS (BTU/H)	VOLTS	IN.	LB
AMIR0501	491.00	AMIR0501WC	383.00	500 (1706)	120	17 1/2	11.75
AMIR0508	491.00	AMIR0508WC	383.00	500 (1706)	208	17 1/2	11.75
AMIR0502	434.00	AMIR0502WC	322.00	500/375 (1706/1280)	240/208	17 1/2	11.75
---	---	AMIR0507WC	383.00	500 (1706)	277	17 1/2	11.75
AMIR1001	523.00	AMIR1001WC	415.00	1000 (3413)	120	23 1/2	14.75
AMIR1008	523.00	AMIR1008WC	415.00	1000 (3413)	208	23 1/2	14.75
AMIR1002	462.00	AMIR1002WC	354.00	1000/750 (3413/2560)	240/208	23 1/2	14.75
---	---	AMIR1007WC	415.00	1000 (3413)	277	23 1/2	14.75
---	---	AMIR1005WC	535.00	1000 (3413)	480	23 1/2	14.75
AMIR1501	554.00	AMIR1501WC	442.00	1500 (5119)	120	29 1/2	17.75
AMIR1508	554.00	AMIR1508WC	442.00	1500 (5119)	208	29 1/2	17.75
AMIR1502	491.00	AMIR1502WC	383.00	1500/1125 (5119/3839)	240/208	29 1/2	17.75
---	---	AMIR1507WC	442.00	1500 (5119)	277	29 1/2	17.75
---	---	AMIR1505WC	569.00	1500 (5119)	480	29 1/2	17.75
AMIR2008	585.00	AMIR2008WC	474.00	2000 (6825)	208	35 1/2	20.75
AMIR2002	523.00	AMIR2002WC	415.00	2000/1500 (6825/5119)	240/208	35 1/2	20.75
---	---	AMIR2007WC	474.00	2000 (6825)	277	35 1/2	20.75
---	---	AMIR2005WC	596.00	2000 (6825)	480	35 1/2	20.75

Add W for white or SW for soft white (or consult the optional color chart and contact your Stelpro representative for all other colors). --- not available Dimensions: 18 in. high

# ABA - BELLA™

## HIGH-END ALUMINIUM BASEBOARD

**5** YEAR  
WARRANTY



- **CLEAN AND HIGH-END FINISH**
- **EXTREMELY SOLID, IMPACT AND RUST RESISTANT**  
MADE OF EXTRUDED ALUMINUM
- **FIT FOR RESIDENTIAL AND COMMERCIAL ENVIRONMENTS**
- **TOTALLY QUIET**

### COLORS

- standard: white
- Orora (optional): refer to p.41

### FINISH

- epoxy-polyester powdercoat

### MANUFACTURING

- 22-gauge steel cabinet
- 11-gauge equivalent extruded aluminum with molded and curved end-caps
- discreet air inlet: air enters through the front of the unit and exits from the top
- thermal protection with automatic reset
- full-length wireway

### ELEMENT

- single tubular, stainless steel sheathed element with boxed aluminum fins for improved heat dissipation; the element is securely fastened at its centre, floating in nylon sleeves at each end, eliminating expansion and contraction noises

### CONTROL

(thermostats/relays compatibility: p.40)

- wall thermostat (not included) – the use of an electronic thermostat is strongly recommended
- built-in mechanical single pole or double pole thermostat, installed in the left or right junction box (optional)
- low voltage relay kit installed in the left or right junction box (optional)
- disconnect switch (optional)

### INSTALLATION

- surface mounted
- wiring compartment at both ends of unit

### WARRANTY

- five years, \*lifetime warranty on the heating element (for original owner)



DENSITY OF 250 W PER LINEAR FOOT – FOR COMMERCIAL USE ONLY						
120 V	208 V	240 /208 V <sup>†</sup>	POWER	WALL LENGTH <sup>†</sup>	WEIGHT	PRICE
CODE	CODE	CODE	WATTS (BTU/H)	IN.	LB	
ABA0301	ABA0308	ABA0302	300 (1024)	20 13/16	5.1	268.00
ABA0501	ABA0508	ABA0502	500 (1706)	28 13/16	6.5	271.00
ABA0751	ABA0758	ABA0752	750 (2560)	38 1/2	8.0	311.00
ABA1001	ABA1008	ABA1002	1000 (3413)	48 3/8	9.7	364.00
ABA1251	ABA1258	ABA1252	1250 (4266)	58 3/16	11.4	437.00
ABA1501	ABA1508	ABA1502	1500 (5119)	67 3/16	13.2	464.00
---	ABA1758	ABA1752	1750 (5972)	76 7/8	15.0	517.00
---	ABA2008	ABA2002	2000 (6825)	84 13/16	16.9	567.00
---	ABA2258	ABA2252	2250 (7679)	94 11/16	18.8	626.00
---	ABA2508	ABA2502	2500 (8532)	103 1/2	20.7	670.00

Add W for white (consult the optional colors chart or contact your Stelpro representative for all other colors).  
<sup>\*</sup> Power indicated is for 240 V only. 277 V, 480 V and density of 150 W per linear foot available upon request.  
<sup>†</sup> Add 1/2 in. for total length. --- not available

# ASPR - PRIMA™

## HIGH-END BASEBOARD



- **SAFER HOUSING** – 1/4 IN. (6 MM) OPENINGS BLOCK ACCESS TO ELEMENTS
- **IMPACT RESISTANT** – REINFORCED FRONT PANEL
- **FAST AND EASY INSTALLATION**  
GUIDE MARKS TO FACILITATE MOUNTING TO WALL
- **EASY TO CLEAN** – TWO-CLICK REMOVABLE FRONT PANEL

### COLORS

- standard: white
- Orora (optional): refer to p.41

### FINISH

- epoxy-polyester powdercoat

### MANUFACTURING

- 22-gauge annealed galvanized steel housing and 20-gauge one-piece front panel that can support 99.8 kg (220 lbs) at the centre
- full-length thermal protection with automatic reset
- discreet air inlet; air exits from the top for maximum air circulation
- full-length wireway

### ELEMENT

- single tubular, stainless steel sheathed element with boxed aluminum fins for improved heat dissipation; the element is securely fastened at its centre, floating in nylon sleeves at each end, eliminating expansion and contraction noises during heat cycles

### CONTROL

- wall thermostat (not included) – use of a Stelpro electronic thermostat is strongly recommended
- built-in single pole electronic thermostat that can be installed in the right or left junction box (optional)
- low voltage relay kit and disconnect switch (optional)

### INSTALLATION

- surface mounted
- connection compartment at each end
- BX and clamp knockouts for the NMD cables located at each end, at the back and under the unit
- oblong mounting holes at 1-inch intervals (top and bottom) and marks every 8 inches to locate studs

### WARRANTY

- five years, \*three years on electronic components and lifetime warranty on heating element (for original owner)

WATTS	TOTAL LENGTH	LENGTH ON WALL	WEIGHT
375 W	22 1/4	21 7/8	5.7
500 W / 750 W	36 1/16	35 11/16	7.7
1000 W / 1250 W	49 7/8	49 1/2	9.7
1500 W / 1750 W	63 11/16	63 5/16	11.7



FOR RESIDENTIAL USE					
275 W DENSITY PER LINEAR FOOT*		225 W DENSITY PER LINEAR FOOT*		VOLTAGE	PRICE
CODE	WATTS (BTU/H)	CODE	WATTS (BTU/H)	VOLTS	
ASPRM0371	375 (1280)	---	---	120	163.00
ASPRM0378	375 (1280)	---	---	208	163.00
ASPRM0372	375 (1280) <sup>†</sup>	---	---	240/208	163.00
ASPRM0377	375 (1280) <sup>††</sup>	---	---	277/240/208	163.00
ASPRM0751	750 (2560)	ASPRM0501	500 (1706)	120	199.00
ASPRM0758	750 (2560)	ASPRM0508	500 (1706)	208	199.00
ASPRM0752	750 (2560) <sup>†</sup>	ASPRM0502	500 (1706) <sup>†</sup>	240/208	199.00
ASPRM0757	750 (2560) <sup>††</sup>	ASPRM0507	500 (1706) <sup>††</sup>	277/240/208	199.00
ASPRM1251	1250 (4266)	ASPRM1001	1000 (3413)	120	249.00
ASPRM1258	1250 (4266)	ASPRM1008	1000 (3413)	208	249.00
ASPRM1252	1250 (4266) <sup>†</sup>	ASPRM1002	1000 (3413) <sup>†</sup>	240/208	249.00
ASPRM1257	1250 (4266) <sup>††</sup>	ASPRM1007	1000 (3413) <sup>††</sup>	277/240/208	249.00
---	---	ASPRM1501	1500 (5119)	120	322.00
ASPRM1758	1750 (5972)	ASPRM1508	1500 (5119)	208	322.00
ASPRM1752	1750 (5972) <sup>†</sup>	ASPRM1502	1500 (5119) <sup>†</sup>	240/208	322.00
ASPRM1757	1750 (5972) <sup>††</sup>	ASPRM1507	1500 (5119) <sup>††</sup>	277/240/208	322.00

Add W for white (consult the optional colors chart or contact your Stelpro representative for all other colors).

\*Densities are averages. †Power indicated is for 240 V only. †† Power indicated is for 277 V only. --- not available

## ACCESSORIES

PRODUCT	DESCRIPTION	PRICE
SIBTE12F	built-in electronic thermostat – Fahrenheit [120 V-240 V]	110.00
SIBTE13F	built-in electronic thermostat – Fahrenheit [277 V-347 V]	148.00
SPRRE153*	built-in electronic low voltage relay [15 A @ 120 V-347 V]	109.00
SPRRE153T*	built-in electronic low voltage relay with 24 V transformer [15 A @ 208 V-347 V]	150.00
SPRRM120T*	built-in electromechanical relay with 24 V transformer [6000 W @ 120 V]	178.00
SPRRM240T*	built-in electromechanical relay with 24 V transformer [6000 W @ 240 V and 5200 W @ 208 V]	171.00
SPRRM347T*	built-in electromechanical relay with 24 V transformer [6000 W @ 347 V]	178.00
SPRRM347C*	built-in electromechanical relay without 24 V transformer [6000 W @ 120 V-347 V]	132.00
SPRDIS600*	disconnect switch [120V -600V] 30A	103.00

Electronic relays can receive a PWM (pulsed width modulation) or all-or-nothing (on/off) signal.

\*Factory installation only



# AB - BRAVA™

## ELECTRIC BASEBOARD

**5** YEAR  
WARRANTY



- **ROUNDED CORNERS**
- **QUICK AND EASY INSTALLATION**
- **STRONG CABINET** – ONE-PIECE CONSTRUCTION
- **MAY BE CONTROLLED BY A BUILT-IN OR WALL THERMOSTAT** (NOT INCLUDED)

### COLORS

- standard: white, soft white
- Orora (optional): refer to p.41

### FINISH

- epoxy-polyester powdercoat

### MANUFACTURING

- 22-gauge steel casing able to support 165 lb (75 kg) at its centre
- full-length thermal protection with automatic reset
- cabinet designed to ensure optimal hot air distribution
- full-length wireway

### ELEMENT

- single tubular, stainless steel sheathed element with boxed aluminum fins for improved heat dissipation; the element is securely fastened at its centre, floating in nylon sleeves at each end, eliminating expansion and contraction noises

### CONTROL

- built-in thermostat installed in the left or right junction box (optional)
- single pole electronic thermostat installed in the left or right junction box (optional)
- wall thermostat (not included) – the use of an electronic thermostat is strongly recommended
- low voltage relay kit installed in the left junction box only (optional)

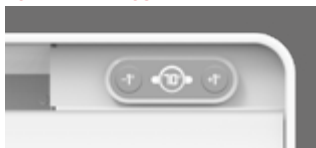
### INSTALLATION

- surface mounted
- knockouts for the BX and clamps for the NMD cables located at each end
- mounting holes spaced at 1-inch intervals along the top and the bottom of the unit

### WARRANTY

- five years, \*three years on electronic components and lifetime warranty on heating element (for original owner)

### BUILT-IN THERMOSTAT



**SIBTE** - ELECTRONIC



**SIBTx** - MECHANICAL

DENSITY OF 250 W PER LINEAR FOOT							
120 V	208 V	240/208 V*	277/240/208V**	POWER	LENGTH	WEIGHT	PRICE
CODE	CODE	CODE	CODE	WATTS (BTU/H)	IN.	LB	
AB0301	AB0308	AB0302	---	300 (1024)	19 7/8	5	85.00
AB0501	AB0508	AB0502	AB0507	500 (1706)	27 7/8	7	88.00
AB0751	AB0758	AB0752	AB0757	750 (2560)	37 5/8	9	103.00
AB41001	AB41008	AB41002	AB41007	1000 (3413)	48	11	114.00
AB51251	AB51258	AB51252	AB51257	1250 (4266)	60	14	137.00
AB61501	AB61508	AB61502	AB61507	1500 (5119)	72	16	156.00
---	AB1758	AB1752	AB1757	1750 (5972)	76	18	169.00
---	AB82008	AB82002	AB82007	2000 (6825)	96	20	172.00
---	AB82258	AB82252	AB82257	2250 (7679)	96	22	179.00
---	AB2508	AB2502	AB2507	2500 (8532)	102 5/8	24	192.00

Add W for white or SW for soft white (consult the optional colors chart or contact your Stelpro representative for all other colors).

\* Power indicated is for 240 V only. \*\* Power indicated is for 277 V only.

Add HA for the high altitude version

Please note that the width of the units may vary by more or less 1/16 in. 480 V available upon request

## ACCESSORIES

PRODUCT	DESCRIPTION	PRICE
SIBTE12F	built-in electronic thermostat – Fahrenheit [120 V-240 V]	110.00
SIBTE13F	built-in electronic thermostat – Fahrenheit [277 V-347 V]	148.00
SIBT1*	built-in single pole thermostat [120 V-600 V]	50.00
SIBT2*	built-in double pole thermostat [120 V-600 V]	58.00
SIBT2TP*	built-in tamper-proof double pole thermostat [120 V-600 V]	85.00
BRE153*	built-in electronic low voltage relay [15 A @ 120 V-347 V]	104.00
BRE156*	built-in electronic low voltage relay [6 A @ 600 V]	169.00
BRE153T*	built-in electronic low voltage relay c/w transformer 24 V [15 A @ 208 V-347 V]	148.00
BDIS277*	disconnect switch [20 A @ 120 V-277 V]	89.00
BP*	spray paint white or soft white	84.00

Electronic relays can receive a PWM (pulsed width modulation) or digital (on/off) signal.

\* Add W for white or SW for soft white    \* Factory installation only



# ASOA - OASIS™

## WALL FAN HEATER

**5** YEAR  
WARRANTY



- **ULTRA-QUIET FAN HEATER**
- **HEAT "BOOST" MODE**  
FAST TEMPERATURE INCREASE (1000 W TO 2000 W)†
- **FEATURING HIGH-PERFORMANCE POLYMER AND SATIN-FINISH PAINTED STEEL**
- **OPTIONAL BUILT-IN ELECTRONIC THERMOSTAT**

### COLOR

- white

### FINISH

- epoxy-polyester powdercoat

### MANUFACTURING

- high performance polymer cabinet and front edges, 20-gauge satin-finish steel front
- centrifugal fan that ensures a quiet and efficient airflow
- thermal protections with manual reset
- top front air intake and bottom front air discharge
- 6 ft (2 m) 16 gage molded cable with 3-prong grounded, 120 V plug (ASOA1501PW model)

### ELEMENT

- high-quality nichrome element that generates instant heat

### CONTROL

(thermostats/relays compatibility: p.40)

#### MODEL WITHOUT A THERMOSTAT:

- an electronic wall thermostat is recommended

#### MODEL WITH A BUILT-IN THERMOSTAT:

- built-in electronic thermostat
- 1000 W to maintain temperature setpoint
- 2000 W when "boost" mode is activated (with a timer)
- drastic temperature drop detection (open window function)

### INSTALLATION

- recessed or surface mounted – surface adapter not required
- on the wall, a minimum of 6 in. from the floor
- front easy to install with only one mounting screw
- power switch selector – 1000 W or 2000 W (model without a thermostat only)

### WARRANTY

- five years, \*three years on electronic components

† 9°F temperature rise within five minutes. (Tests performed with the 2000 W model in a 70 ft<sup>2</sup> room.)



PRODUCT	WITH THERMOSTAT		WITHOUT THERMOSTAT	VOLTAGE	PRICE
	HEATING	HEAT "BOOST" MODE			
CODE	WATTS (BTU/H)	WATTS (BTU/H)	WATTS	VOLTS	
ASOA1501W	1000 (3413)	1500 (5119)	---	120	552.00
ASOA1501WCW	---	---	1000 (3413)	120	431.00
ASOA2002W	1000/750 (3413/2560)	2000/1500 (6825/5119)	---	240/208	552.00
ASOA2002WCW	---	---	2000/1500 or 1000/750 (6825/5119 or 3413/2560)**	240/208	431.00
MODEL WITH 120 V PLUG (RESIDENTIAL OUTLET)					
ASOA1501PW	1000 (3413)	1500 (5119)	---	120	613.00

\*\* Selected when installed with a power switch.  
 Dimensions: 12 in. wide x 15 13/16 high. Weight: 7.9 lb

# ARWF - PULSAIR™

## WALL FAN HEATER

**5** YEAR WARRANTY



- **VERY QUIET FAN HEATER**
- **RESISTANT GRILLE**
- **INSTANT HEAT – NICHROME ELEMENT**
- **MULTIPLE INSTALLATION OPTIONS**  
RECESSED, SURFACE MOUNTED, HORIZONTAL OR VERTICAL

### COLORS

- standard: white, soft white
- Orora (optional): refer to p.41

### FINISH

- epoxy-polyester powdercoat

### MANUFACTURING

- 20-gauge steel cabinet and 18-gauge steel grille
- quiet fan:
  - 40 CFM (500 W to 1000 W models)
  - 75 CFM (1250 W to 2000 W models)
- thermal protection with automatic reset
- dual wattage (DW) in some models (see DW in technical specifications table)
- additional thermal protection with a thermal fuse (must be replaced if triggered)
- pilot light indicates when thermal protection has been activated

### ELEMENT

- nichrome element produces instant heat

### CONTROL

- (thermostats/relays compatibility: p.40)
- built-in thermostat (optional)
  - wall thermostat (not included) – the use of an electronic thermostat is strongly recommended

### INSTALLATION

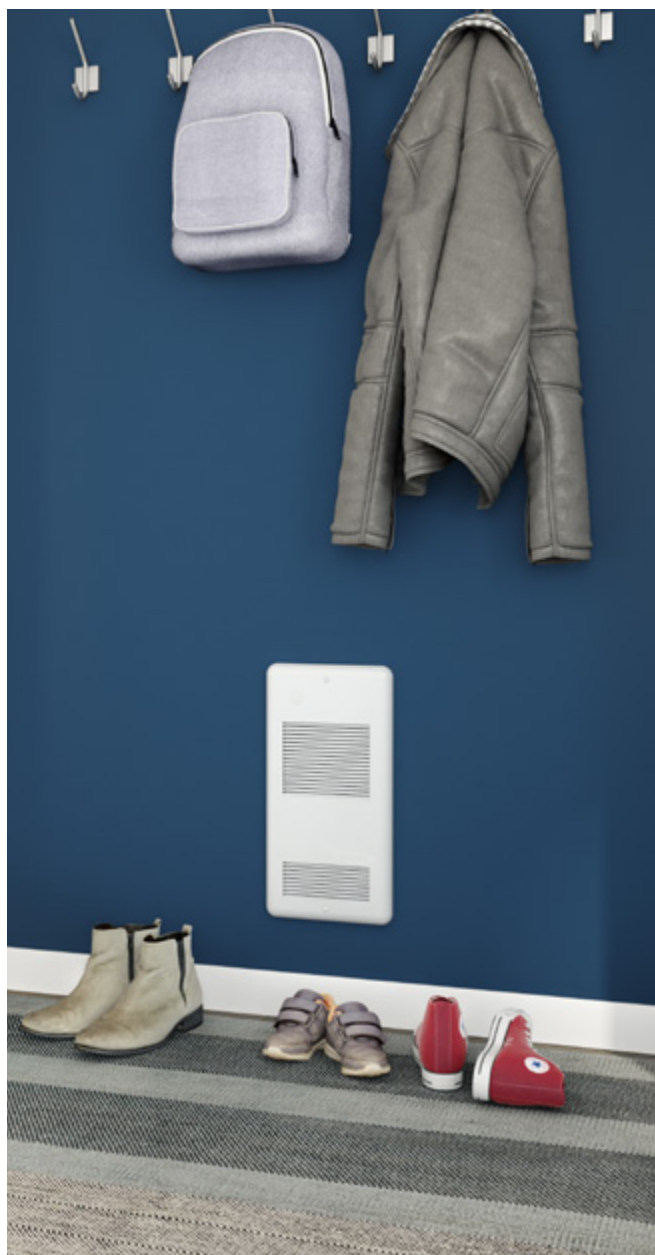
- wall mounted
- recessed (wall must have a depth of 2 3/8 in. minimum)
- surface mounted with surface adapter (optional)
- four installation positions

### WARRANTY

- five years

WITHOUT CONTROL		BUILT-IN SINGLE POLE THERMOSTAT		BUILT-IN DOUBLE POLE THERMOSTAT		POWER*	VOLTAGE	FLOW
CODE	PRICE	CODE	PRICE	CODE	PRICE	WATTS (BTU/H)	VOLTS	CFM
ARWF1001	240.00	ARWF1001T	278.00	ARWF1001T2	278.00	1000/500 (3413/1706)	120	40
ARWF1008	240.00	ARWF1008T	278.00	ARWF1008T2	278.00	1000/500 (3413/1706)	208	40
ARWF1002	240.00	ARWF1002T	278.00	ARWF1002T2	278.00	1000/500 (3413/1706)	240	40
ARWF1501	240.00	ARWF1501T	278.00	ARWF1501T2	278.00	1500/750 (5119/2560)	120	75
ARWF1508	240.00	ARWF1508T	278.00	ARWF1508T2	278.00	1500/750 (5119/2560)	208	75
ARWF1502	240.00	ARWF1502T	278.00	ARWF1502T2	278.00	1500/750 (5119/2560)	240	75
ARWF2008	240.00	ARWF2008T	278.00	ARWF2008T2	278.00	2000/1000 (6825/3413)	208	75
ARWF2002	240.00	ARWF2002T	278.00	ARWF2002T2	278.00	2000/1000 (6825/3413)	240	75

Add W for white or SW for soft white (consult the optional colors chart or contact your Stelpro representative for all other colors). Weight: 6 lb  
 --- not available \* dual wattage



# AWF

## WALL FAN HEATER

**3** YEAR  
WARRANTY



- **GRILLE WITH ROUNDED SIDES**
- **WIDE RANGE OF MODELS AND HEATING CAPACITIES**  
INCLUDING A SINGLE 4800 W MODEL
- **NICHROME ELEMENT** – ASSURING INSTANT HEAT
- **OPTIONAL DISCONNECT SWITCH AVAILABLE**

### COLORS

- standard: white, soft white
- Orora (optional): refer to p.41

### FINISH

- epoxy-polyester powdercoat

### MANUFACTURING

- 20-gauge steel cabinet and 18-gauge steel grille
- top air intake with bottom air discharge
- quiet helicoidal fan:
  - single unit 1 x 160 CFM
  - double unit 2 x 160 CFM
  - triple unit 3 x 160 CFM
- thermal protection with automatic reset
- closed and permanently lubricated motor

### ELEMENT

- high-quality nichrome element producing instant heat

### CONTROL

- (thermostats/relays compatibility: p.40)
- connection of multiple units to the same thermostat is possible with a relay kit without transformer (optional) and an external transformer (not provided)

### INSTALLATION

- wall mounted
- recessed or surface mounted with surface adapter (optional)

### WARRANTY

- three years

208 V	240 V	277 V	POWER	WEIGHT	PRICE
			WATTS (BTU/H)	LB	
WITH THERMOSTAT					
AWF1508T	AWF1502T	AWF1507T	1500 (5119)	20	615.00
AWF2008T	AWF2002T	AWF2007T	2000 (6825)	20	615.00
AWF3008T	AWF3002T	AWF3007T	3000 (10 238)	20	615.00
AWF4008T	AWF4002T	AWF4007T	4000 (13 651)*	20	615.00
AWF4808T	AWF4802T	AWF4807T	4800 (16 381)	20	695.00
WITHOUT THERMOSTAT					
AWF1508	AWF1502	AWF1507	1500 (5119)	20	539.00
AWF2008	AWF2002	AWF2007	2000 (6825)	20	539.00
AWF3008	AWF3002	AWF3007	3000 (10 238)	20	539.00
AWF4008	AWF4002	AWF4007	4000 (13 651)*	20	539.00
AWF4808	AWF4802	AWF4807	4800 (16 381)	20	619.00

Add W for white or SW for soft white (consult the optional colors chart or contact your Stelpro representative for all other colors).

\* Dual wattage (4000/2000 W – 13 651/6825 Btu/hr)



# ASK

## CEILING FAN HEATER

5

YEAR  
WARRANTY

  
C US



- **CEILING MOUNTED** – IDEAL FOR ROOMS WITH LIMITED WALL SPACE
- **HEATING ON DEMAND** – OPTIONAL WALL TIMER
- **COMPACT AND QUIET**

### COLORS

- standard: white, soft white
- Orora (optional): refer to p.41

### FINISH

- epoxy-polyester powdercoat

### MANUFACTURING

- 22-gauge steel cabinet and 1/4 in. (6.4 mm) deep 20-gauge steel front grille
- easy access for maintenance (no screws)

### THERMAL PROTECTION

- thermal protection with automatic reset

### ELEMENT

- nichrome element produces instant heat

### CONTROL

(thermostats/relays compatibility: p.40)

- built-in thermostat (optional)
- wall thermostat (not included) – the use of an electronic thermostat is strongly recommended
- 60 minute timer (optional)

### INSTALLATION

- ceiling mounted (recommended height 8 ft, maximum 9 ft)
- surface mounted with surface adapter (optional)
- recessed or surface mounted with adapter for suspended ceiling (optional)
- unit can be mounted parallel or perpendicular to ceiling beams
- approved to be recessed in mineral wool; for all other materials please check with insulating product manufacturer

### WARRANTY

- five years

120 V	208 V	240 / 208 V*	POWER	FLOW	THROW DISTANCE	HEAT RISE	PRICE
CODE	CODE	CODE	WATTS (BTU/H)	CFM	FT	*F	
ASK0501	ASK0508	ASK0502	500 (1706)	60	8	26	448.00
ASK0751	ASK0758	ASK0752	750 (2560)	60	8	39	448.00
ASK1001	ASK1008	ASK1002	1000 (3413)	60	8	53	475.00
ASK1251	ASK1258	ASK1252	1250 (4266)	60	8	66	475.00
ASK1501	ASK1508	ASK1502	1500 (5119)	60	8	79	524.00
---	---	ASK2002	2000 (6825)	90	10'6"	70	594.00

Add W for white or SW for soft white (consult the optional colors chart or contact your Stelpro representative for all other colors).

\* The power indicated applies to the 240 V only.

--- not available

Weight: 11 lb

# ASKS

## KICK SPACE HEATER

**5** YEAR WARRANTY



- **POWER SELECTOR SWITCH**
- **EASY INSTALLATION**
- **ATTRACTIVE GRILLE – ONE-PIECE, FRAMELESS**

### COLORS

- standard: white, soft white
- luxury finish: stainless steel
- Orora (optional): refer to p.41

### FINISH

- epoxy-polyester powdercoat

### MANUFACTURING

- 22-gauge steel cabinet and 16-gauge steel front
- quiet, 50 CFM capacity
- thermal protection with automatic reset
- added protection provided by a fuse-link (must be replaced once activated)

### WATTAGE AND VOLTAGE

- power selector switch

### ELEMENT

- tubular element sheathed with spiral-wound fins for improved heat dissipation

### CONTROL

- (thermostats/relays compatibility: p.40)
- wall thermostat (not included) – the use of an electronic thermostat is strongly recommended
- built-in thermostat (optional)

### INSTALLATION

- recessed

### WARRANTY

- five years, \*three years on electronic components

PRODUCT	POWER	VOLTAGE	THROW DISTANCE (IN FRONT)	HEAT RISE	PRICE	
CODE	WATTS (BTU/H)	VOLTS	FT	*F	W OR SW	SS
ASKS1001	500 or 1000 (1706 or 3413)	120	4	53	441.00	491.00
ASKS1002	500/375 or 1000/750 (1706/1280 or 3413/2560)	240/208	4	53	441.00	491.00

Add W for white, SW for soft white or SS for stainless steel (consult the optional colours chart or contact your Stelpro representative for all other colours).

Weight: 10 lb



# SCR - RADIANCE™

## COVE HEATER

**5** YEAR WARRANTY



- **15% GREATER ENERGY PERFORMANCE COMPARED TO OTHER RADIANT HEATERS**
- **WALL MOUNTED 2.5 IN. FROM THE CEILING**  
OUT OF REACH OF CHILDREN AND FREES UP SPACE
- **IDEAL FOR PEOPLE WITH ALLERGIES**  
NO FORCED-AIR MOVEMENT OR COMBUSTION

### COLORS

- standard: soft white
- Orora (optional): anodized aluminum paint and black only (refer to p.41)

### FINISH

- front panel: high temperature, high emissivity paint coating for maximum thermal efficiency
- other parts: hybrid epoxy-polyester powder paint

### MANUFACTURING

- aluminum front panel
- 18-gauge steel cabinet and back box
- aluminum end covers
- 24-gauge stainless steel reflector
- full-length wireway
- designed and assembled for reduced noise from the expansion and contraction of metal during heating cycles

### ELEMENT

- tubular; stainless steel

### CONTROL

- (thermostats/relays compatibility: p.40)
- wall thermostat (not included) – the use of an electronic thermostat is strongly recommended
  - built-in single pole bimetal thermostat installed in the left or right junction box (optional)

### INSTALLATION

- wall mounted at a distance of 2.5 in. or more from the ceiling
- all flammable material must be 6 in. or more from the front of the unit

### WARRANTY

- five years

120 V	208 V	240 /208 V†	277 V	POWER	LENGTH	WEIGHT	PRICE
CODE	CODE	CODE	CODE	WATTS (BTU/H)	IN.	LB	
SCR0451	SCR0458	SCR0452	SCR0457	450 (1536)	34	6.4	310.00
SCR0601	SCR0608	SCR0602	SCR0607	600 (2048)	47	8.9	378.00
SCR0751	SCR0758	SCR0752	SCR0757	750 (2560)	59	11.1	441.00
SCR0901	SCR0908	SCR0902	SCR0907	900 (3071)	71	13.0	486.00
SCR1051	SCR1058	SCR1052	SCR1057	1050 (3583)	83	15.7	527.00
SCR1201	SCR1208	SCR1202	SCR1207	1200 (4095)	94	17.8	599.00
---	SCR1508	SCR1502	SCR1507	1500 (5119)	106	20.1	728.00

Add SW for soft white (consult the optional colors chart or contact your Stelpro representative for all other colors).

† The power indicated applies to the 240 V only.

--- not available

# ASIRH - ZENITH™

## INFRARED RADIANT HEATER

**3** YEAR WARRANTY



- GENERATES INSTANT HEAT
- COMPACT, LIGHTWEIGHT, STURDY AND EASY TO INSTALL
- CLEAN ELECTRICAL ENERGY WITH NO AIR DISPLACEMENT
- WEATHER-RESISTANT MODELS AVAILABLE

### COLOR

- black

### FINISH

- super-resistant polyester powdercoat

### MANUFACTURING

- 14-gauge aluminum housing
- stainless steel grille
- specialized embossed aluminum reflectors that optimize radiant efficiency and reduce glare
- standard mounting bracket (included)

### LAMP

- quartz lamp with glare-reducing filter and tungsten filament produces short-wave infrared heat
- 80% radiant efficiency

### CONTROL

- (thermostats/relays compatibility: p.40)
- electronic dimmer with timer (optional) (ASIRHC402-1 or independent switch\*)

### INSTALLATION

- on wall or ceiling with mounting bracket (included) or pole mounted (adaptor not provided), in accordance with clearances and installation heights as specified in the installation manual

### WARRANTY

- three years

\* The power feeding the units can be reduced using controls that meet the following requirements: the controls must be able to handle inductive and resistant loads. They must also have circuits to regulate the start-up current since this type of appliance generates a high start-up current.

PRODUCT		WEATHER-RESISTANT		POWER	VOLTAGE	HEIGHT	WEIGHT
CODE	PRICE	CODE	PRICE	WATTS (BTU/H)	VOLTS	IN.	LB
ASIRH1501W	862.00	ASIRH1501WR	991.00	1500 (5120)	120	10	11
ASIRH2002W	862.00	ASIRH2002WR	991.00	2000/1600 (6825/5460)	240/208	10	11
ASIRH4002W	1 065.00	ASIRH4002WR	1 198.00	4000/3200 (13 651/10 921)	240/208	15 7/8	13.8
ASIRH6002W	1 384.00	ASIRH6002WR	1 515.00	6000/4800 (20 476/16 381)	240/208	21 13/16	16.3

Frequency: 60 HZ. Dimensions: 5 5/8 in. (depth) x 19 in. (length).

# ASHU - OXFORD™

COMMERCIAL AND INDUSTRIAL  
UNIT HEATER

3

YEAR  
WARRANTY

  
C US



- INSTANT HEAT
- PERMANENTLY LUBRICATED MOTOR
- WIDE RANGE OF POWER: 2 KW TO 60 KW

COLOR

- charcoal

FINISH

- epoxy-polyester powdercoat

MANUFACTURING

- heavy-duty, 18-gauge steel cabinet
- adjustable louvers and protective screen
- thermal protection with automatic reset

MOTOR

- permanently enclosed lubricated ball bearing motor for long-lasting operation

ELEMENT

- nichrome element produces instant heat

CONTROL

(thermostats/relays compatibility: p.40)

- connection of multiple units to the same thermostat is possible with a relay kit without transformer (optional) and an external transformer (not provided)
- built-in thermostat (included with T series)

INSTALLATION

- wall or ceiling mounted with universal mounting bracket (included). See web site for more details

WARRANTY

- three years

PRODUCT		FLOW	POWER	HEAT RISE	WEIGHT	PRICE
208 V	240 V	CFM	WATTS (BTU/H)	°F	LB	
ASHU0381CHAR	ASHU0321CHAR	250	3000 (10 238)	38	40	819.00
ASHU0481CHAR	ASHU0421CHAR	250	4000 (13 651)	50	40	828.00
---	ASHU0521CHAR	450	5000 (17 064)	35	40	1 020.00
ASHU0783CCHAR*	ASHU0721CCHAR	700	7500 (25 595)	34	40	1 557.00
ASHU1083CCHAR*	ASHU1021CCHAR	700	10 000 (34 127)	45	40	1 642.00
ASHU1583CCHAR*	ASHU1521CCHAR	1300	15 000 (51 191)	37	67	2 881.00
ASHU2083CCHAR*	ASHU2021CCHAR	1300	20 000 (68 254)	49	67	3 167.00
277 V	480 V-24 V	CFM	WATTS (BTU/H)	°F	LB	
ASHU0571CCHAR	ASHU0553C24CHAR*	450	5000 (17 064)	35	40	1 278.00
ASHU0771CCHAR	ASHU0753C24CHAR*	700	7500 (25 595)	34	40	1 763.00
ASHU1071CCHAR	ASHU1053C24CHAR*	700	10 000 (34 127)	45	40	1 793.00
---	ASHU1553C24CHAR*	1300	15 000 (51 191)	37	67	2 881.00
---	ASHU2053C24CHAR*	1300	20 000 (68 254)	49	67	3 167.00
---	ASHU2553C24CHAR*	1300	25 000 (85 318)	61	67	3 661.00
---	ASHU3053C24CHAR*	1400	30 000 (102 381)	68	67	3 728.00
---	ASHU4053C24CHAR*	2100	40 000 (136 508)	60	100	5 432.00
---	ASHU5053C24CHAR*	2100	50 000 (170 635)	75	100	5 696.00
---	ASHU6053C24CHAR*	2100	60 000 (204 762)	90	100	5 829.00

\* Three-phase unit that can be field-converted to a single phase unit      \* Three-phase unit      --- not available

# ARUH - OXFORD™

COMMERCIAL AND RESIDENTIAL  
UNIT HEATER

3

YEAR  
WARRANTY





- INSTANT HEAT
- ADJUSTABLE LOUVERS ALLOW YOU TO DIRECT HEAT
- WALL OR CEILING INSTALLATION
- CLOSED AND PERMANENTLY LUBRICATED MOTOR
- 2 KW TO 5 KW MODELS AVAILABLE

**COLOR**

- charcoal

**FINISH**

- epoxy-polyester powdercoat

**MANUFACTURING**

- 20-gauge steel cabinet
- closed and permanently lubricated motor
- 350 CFM quiet helicoidal fan
- adjustable louvers
- thermal protection with automatic reset

**ELEMENT**

- nichrome element produces instant heat

**CONTROL**

(thermostats/relays compatibility: p.40)

- built-in thermostat (included with T series)
- wall thermostat (not included)

**INSTALLATION**

- wall or ceiling mounted with universal mounting bracket (included)

**WARRANTY**

- three years

WITHOUT CONTROL		BUILT-IN THERMOSTAT		24 V CONTROL		POWER	HEAT RISE
CODE	PRICE	CODE	PRICE	CODE	PRICE	WATTS (BTU/H)	°F
ARUH2CHAR	530.00	ARUH2TCHAR	621.00	ARUH2C24CHAR	621.00	2000/1500 (6825/5119)	18
ARUH3CHAR	626.00	ARUH3TCHAR	721.00	ARUH3C24CHAR	721.00	3000/2250 (10 238/7679)	27
ARUH4CHAR	636.00	ARUH4TCHAR	721.00	ARUH4C24CHAR	721.00	4000/3000 (13 651/10 238)	36
ARUH5CHAR	647.00	ARUH5TCHAR	721.00	ARUH5C24CHAR	721.00	5000/3750 (17 064/12 798)	45

Voltage: 240/208 Volts, Throw distance: 10 ft, Flow: 350 CFM, Phase: 1 NB, Weight: 20 lb

# ASGH - SPIDER™

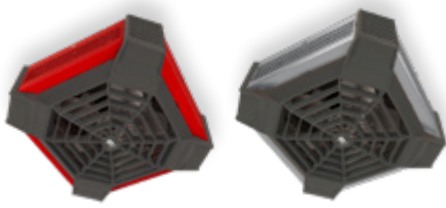
## CEILING FAN HEATER

5

YEAR  
WARRANTY

UL

LISTED



- UNIQUE DESIGN
- SPECIALLY DESIGNED FOR RESIDENTIAL GARAGES
- ENERGY SAVING, COMPATIBLE WITH 4000 W ELECTRONIC THERMOSTATS
- CEILING INSTALLATION FREES UP WALLS AND STORAGE SPACE

### COLOR

- red
- luxury finish: stainless steel

### FINISH

- polyester powdercoat

### MANUFACTURING

- 22-gauge smooth steel housing
- quiet helicoidal fan
- thermal protection with automatic reset
- closed and permanently lubricated motor

### ELEMENT

- nichrome element produces instant heat

### CONTROL

- (thermostats/relays compatibility: p.40)
- wall thermostat (not included)

### INSTALLATION

- ceiling surface mounted with bracket
- from adjacent walls at a minimum of 12 in. (305 mm)
- from floor at a minimum of 8 ft. (2.4 m) and a maximum of 10 ft. (3 m)

### WARRANTY

- five years

PRODUCT	POWER	VOLTAGE	HEAT RISE	COLOR	PRICE
CODE	WATTS (BTU/H)	VOLTS	°F		
ASGH4002R	4000/3000 (13 651/10 238)	240/208	83	RED	615.00
ASGH4002SS	4000/3000 (13 651/10 238)	240/208	83	STAINLESS STEEL	784.00

Weight: 13 lb





# ASCH

## PORTABLE MULTIPURPOSE HEATER

2

YEAR  
WARRANTY



C US



- SAFE AND STURDY
- CONVENIENT AND EASY TO TRANSPORT
- COOL TOUCH HOUSING
- ERGONOMIC CARRYING HANDLE FOR EASY CABLE STORAGE
- CAN BE INSTALLED ON THE WALL OR CEILING WITH A MOUNTING BRACKET (SOLD SEPARATELY)

### COLOR

- red

### FINISH

- epoxy-polyester powdercoat

### MANUFACTURING

- 20-gauge steel cabinet
- sturdy handle for portability that also serves as cord rack and which adapts to the mounting bracket
- 6 ft (2 m) 12 Awg. molded cable with 3-prong grounded
- thermal protection with automatic reset

### MOTOR

- 250 CFM fan

### ELEMENT

- nichrome element ensuring increased comfort
- cone-shaped to concentrate the air around the element

### CONTROL

- built-in thermostat with control knob protector

### INSTALLATION

- connects to a standard 30 A 250 V (ASCH48T) or a 20 A 250 V (ASCH40T) grounded receptacle
- mounting bracket (sold separately) that can rotate at 360° while preventing the unit from tipping

### WARRANTY

- two years

PRODUCT	POWER	VOLTAGE	CONNECTION	PRICE
CODE	WATTS (BTU/H)	VOLTS		
ASCH40T	4000/3000 (13 651/10 238)	240/208	20 A 250 V PLUG	314.00
ASCH48T	4800/3600 (16 381/12 286)	240/208	30 A 250 V PLUG	348.00

Weight: 13 lb

### ACCESSORY

PRODUCT	DESCRIPTION	PRICE
SCH-WBB	Mounting bracket, black	56.00

# SCU

## UNIVERSAL HEATING CABLE



- **SILENT, ECONOMICAL AND SAFE**
- **FLEXIBLE, EASY-TO-HANDLE CABLE**
- **PROVIDES OPTIMAL COMFORT – BY HEATING FROM THE FLOOR UP**
- **EASY TO INSTALL – COMPLETE KIT, INCLUDING: HEATING CABLE, GLUE STICKS, CABLE SPACERS AND INSTALLATION GUIDE**
- **UNCOUPLING MEMBRANE AVAILABLE TO EASE INSTALLATION OF CERAMIC FLOOR**

### MANUFACTURING

- diameter suitable for use with an uncoupling membrane
- heating elements sheathed in thermoplastic polymer insulation
- dual heating element that allows for a return to the thermostat inside the cable (therefore, cable route planning doesn't need to include a return to the thermostat)
- tin-plated copper braiding for better corrosion resistance

### WATTAGE

- 12 W/ft<sup>2</sup> – 3 spaces (with a membrane or cable spacers)
- 9 W/ft<sup>2</sup> – 4 spaces (cable spacers)

### CONTROL

- (thermostats/relays compatibility: p.40)
- electronic thermostat for floor heating (sold separately)

Note: a temperature sensor is included with the SCU product and another with the Stelpro electronic thermostat.

### INSTALLATION

- with the cable spacers (included) or any uncoupling membrane (sold separately)
- on any substrate compatible with thin-set mortar or self-leveling underlayment
- glue sticks included
- under most floor coverings\*, so long as the heating cable is completely covered with self-leveling mortar

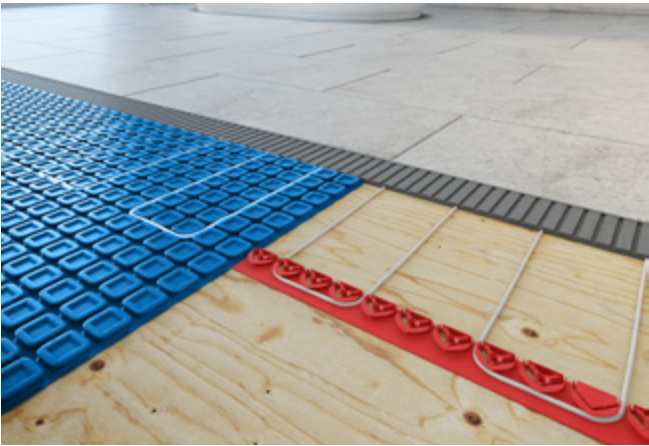
### WARRANTY

- twenty-five years

\* For more information on floor coverings that can be installed over a heating cable, we strongly recommend that you check with the floor covering manufacturers in question.

### ACCESSORIES

PRODUCT	DESCRIPTION	PRICE
STSCC	thermostat sensor for heating cable	35.00
SCU-MEM-054	membrane for SCU floor heating cable – 53.8 ft <sup>2</sup> roll	358.00
SCU-MEM-162	membrane for SCU floor heating cable – 161 ft <sup>2</sup> roll	981.00
SCU-STRIP-01	plastic cable spacers for installation (pack of 24)	34.00
SCURK	repair kit	60.00
SCU-PROBAND-1530	proband roll 6 in. x 98 ft 5 in.	386.00



PRODUCT	AMPERAGE	LENGTH	POWER	CABLE SPACER*		PRICE
				3 spaces 12 W/FT²	4 spaces 9 W/FT²	
CODE	AMP	FT	WATTS (BTU/H)	SURFACE FT²		
240/208 VOLTS						
SCU2W0135S013	0.6/0.5	35.3	135/101 (461/345)	12.5	16.6	324.00
SCU2W0203S019	0.8/0.7	53.1	203/152 (693/519)	18.2	24.2	388.00
SCU2W0270S025	1.1/1.0	70.5	270/203 (921/693)	23.9	31.7	483.00
SCU2W0338S030	1.4/1.2	88.2	338/254 (1153/867)	29.5	39.3	553.00
SCU2W0405S036	1.7/1.5	105.8	405/304 (1382/1037)	35.1	46.7	615.00
SCU2W0540S047	2.3/1.9	141.0	540/405 (1843/1382)	46.2	61.4	649.00
SCU2W0675S058	2.8/2.4	176.3	675/506 (2304/1727)	57.0	76.1	763.00
SCU2W0810S069	3.4/2.9	211.6	810/608 (2764/2075)	68.3	90.9	865.00
SCU2W0950S081	4.0/3.4	248.2	950/713 (3242/2433)	79.7	106.0	939.00
SCU2W1080S091	4.5/3.9	282.1	1080/810 (3686/2764)	90.3	120.0	977.00
SCU2W1300S109	5.4/4.7	339.4	1300/975 (4437/3327)	108.1	143.7	1 062.00
SCU2W1630S136	6.8/5.9	425.8	1630/1223 (5563/4174)	134.9	179.3	1 275.00
SCU2W1840S153	7.7/6.6	480.5	1840/1380 (6279/4710)	151.8	201.7	1 433.00
SCU2W2580S213	10.8/9.3	673.8	2580/1935 (8805/6604)	211.5	281.1	1 803.00
SCU2W3400S279	14.2/12.3	888.0	3400/2550 (11 603/8702)	277.5	368.7	2 360.00
120 VOLTS						
SCU1W0135S013	1.1	35.3	135 (461)	12.5	16.6	324.00
SCU1W0203S019	1.7	52.9	203 (693)	18.2	24.2	388.00
SCU1W0270S024	2.3	70.5	270 (921)	23.9	31.7	483.00
SCU1W0338S030	2.8	88.2	338 (1153)	29.5	39.3	553.00
SCU1W0405S036	3.4	105.8	405 (1382)	35.1	46.7	615.00
SCU1W0475S042	4.0	124.1	475 (1621)	40.8	54.3	632.00
SCU1W0540S047	4.5	141.1	540 (1843)	46.2	61.4	649.00
SCU1W0650S056	5.4	169.8	650 (2218)	55.0	73.4	751.00
SCU1W0815S070	6.8	212.9	815 (2781)	68.7	91.5	781.00
SCU1W0920S078	7.7	240.2	920 (3140)	77.2	102.7	838.00
SCU1W1055S089	8.8	275.5	1055 (3600)	88.2	117.4	934.00
SCU1W1160S098	9.7	303.0	1160 (3959)	96.8	128.8	1 007.00
SCU1W1290S109	10.8	336.9	1290 (4402)	107.3	142.8	1 094.00
SCU1W1425S120	11.9	372.2	1425 (4863)	118.3	157.2	1 203.00
SCU1W1700S142	14.2	444.0	1700 (5802)	140.5	186.7	1 424.00

\* Included with the product Wall clearance: 3 in. Density is only for 240 V and 120 V.

# SSFR

SELF-REGULATING FREEZE  
PROTECTION CABLE REEL

2

YEAR  
WARRANTY

  
C US



- **ENERGY EFFICIENT** – AUTOMATICALLY VARIES ITS POWER OUTPUT IN RESPONSE TO TEMPERATURE CHANGES
- **EASY TO INSTALL** – CAN BE CUT TO ANY LENGTH
- **SAFE** – EVEN WHEN OVERLAPPED
- **POWER CONNECTION, SPLICE, TEE AND END SEAL KIT** REDUCES INSTALLATION TIME

### MANUFACTURING

- normal cable width 0.42 in.
- normal cable thickness 0.23 in.
- cable bus wire gauge 16 AWG

### WATTAGE

- 5 W/ft, 8 W/ft, 10 W/ft

### INSTALLATION

- maximum exposure temperature is 185 °F
- Minimum installation temperature -40 °F

### WARRANTY

- two years

PRODUCT	VOLTAGE	LENGTH	POWER OUTPUT	PRICE
CODE	VOLTS	FT	WATTS	
SSFR1W05L1000	120	1000	5	8 626.00
SSFR1W08L1000	120	1000	8	8 626.00
SSFR1W05L0500	120	500	5	4 410.00
SSFR1W08L0500	120	500	8	4 410.00
SSFR2W05L1000	240	1000	5	8 626.00
SSFR2W08L1000	240	1000	8	8 626.00
SSFR2W10L1000	240	1000	10	8 626.00
SSFR2W05L0500	240	500	5	4 410.00
SSFR2W08L0500	240	500	8	4 410.00
SSFR2W10L0500	240	500	10	4 410.00

ACCESSORIES

PRODUCT	DESCRIPTION	PRICE
SSFR-ALUTAPE	aluminum adhesive foil tape	27.00
SSFR-FIBTAPE	fiberglass adhesive tape	14.00
SSFR00	power connection kit for SSFR cable	74.00
SSFR03	fiberglass adhesive tape and warning labels	19.00
SSFR08	plug-in power connection with GFCI kit for SSFR cable	110.00
SSFR10	splice and tee kit for SSFR cable	41.00
SSFR12	end seal kit for SSFR cable	27.00
SSFR13	roof clips for SSFP/SSFR cables (Kit of 10)	38.00
SSFR14	roof clips for SSFP/SSFR cables (Kit of 50)	134.00
SSFR15	downspout cable hanger bracket for SSFP/SSFR cables	27.00
SSFR-ENDSEAL	commercial end seal kit for SSFR cable	37.00
SSFR-SPLICE	commercial splice connection kit for SSFR cable	97.00
SSFR-TEE	commercial tee connection kit for SSFR cable	97.00
SSFR-JBOX	commercial junction box for SSFR cable	384.00
FPT130	electronic controller NEMA 4, 30 A @ 100V - 277 V with GFI 30 mA, setpoint selection 30 °F, 38 °F, 45 °F or 50 °F with a 20 ft sensor	2 191.00
TPR-L1N-3X-Q10	thermostat NEMA 4, 22 A resistive @ 125 V/250 V/480 V, fixed setpoint at 40 °F with 3 ft tin plated copper capillary	682.00
TRF115-005	thermostat NEMA 4, 25 A resistive @ 120 V/208 V/240 V/277 V, 0 °F to 120 °F with 5 ft stainless steel capillary	247.00
GFPRO	electronic controller NEMA 4, 30 A @ 100 V - 277 V resistive with GFI 30 mA, 2 sensor inputs for GIT-1 sensor	2 191.00
PDPRO	electronic controller NEMA 4, 30 A @ 100 V - 277 V resistive, 2 sensor inputs for GIT-1 sensor	2 054.00
GIT-1	roof and gutter temperature and moisture sensor for GFPRO and PDPRO, stepoint at 38 °F	1 232.00
DS-8C	controller with aerial temperature and moisture deported 10 ft sensor, 30 A @ 100 - 277 V	1 151.00
DS-9C	controller with aerial temperature and moisture deported 10 ft sensor, 2 circuits of 30 A @ 100 - 277 V	1 367.00



# SSFP

## SELF-REGULATING FREEZE PROTECTION PREASSEMBLED CABLE

2

YEAR  
WARRANTY



C US



- RESIDENTIAL OR COMMERCIAL USE
- PREASSEMBLED SELF-REGULATING CABLE
- QUICK AND EASY TO CONNECT TO A 120 V OUTLET
- 240V MODELS AVAILABLE – THREE CONNECTION WIRES
- AVAILABLE IN A RANGE OF LENGTHS

### MANUFACTURING

- normal cable width 0.42 in.
- normal cable thickness 0.23 in.
- cable bus wire gauge 16 AWG
- cold lead length 6 ft

### WATTAGE

- 5 W/ft at 50°F

### INSTALLATION

- minimum circuit breaker size is 15 amps
- maximum exposure temperature is 185°F
- electrical classification: nonhazardous

### WARRANTY

- two years

PRODUCT	VOLTAGE	LENGTH	COLD LEAD WITH PLUG	POWER OUTPUT ON PIPE			PRICE
CODE	VOLTS	FT	AWG	WATTS @ 50°F	WATTS @ 40°F	WATTS @ 32°F	
SSFP1W05L0006	120	6	18	30	36	60	122.00
SSFP1W05L0012	120	12	18	60	72	120	155.00
SSFP1W05L0018	120	18	18	90	108	180	193.00
SSFP1W05L0024	120	24	18	120	144	240	231.00
SSFP1W05L0036	120	36	18	180	216	360	314.00
SSFP1W05L0050	120	50	16	250	300	500	417.00
SSFP1W05L0075	120	75	16	375	450	750	608.00
SSFP1W05L0100	120	100	16	500	600	1000	801.00
SSFP1W05L0125	120	125	14	625	750	1250	992.00
SSFP1W05L0150	120	150	14	750	900	1500	1 178.00
SSFP2W05L0036	240	36	18	180	216	360	314.00
SSFP2W05L0050	240	50	16	250	300	500	417.00
SSFP2W05L0075	240	75	16	375	450	750	608.00
SSFP2W05L0100	240	100	16	500	600	1000	801.00
SSFP2W05L0125	240	125	14	625	750	1250	992.00
SSFP2W05L0150	240	150	14	750	900	1500	1 178.00

# SCRG

## CONSTANT WATTAGE ROOF AND GUTTER DE-ICING HEATING CABLE

**2** YEAR WARRANTY



- PREVENT ROOF DAMAGE AND LEAKING
- KEEP GUTTERS AND DOWNSPOUTS FLOWING
- PREASSEMBLED – READY TO INSTALL
- THERMOSTAT WITH TEMPERATURE AND MOISTURE SENSORS (OPTIONAL)

### MANUFACTURING

- tough XLPE inner insulation
- continuous ground braid
- weather resistant PVC (high-low temperature) out jacket
- twin conductor
- bending radius of 1 inch
- 6 ft cold lead with plug

### WATTAGE

- 5 W/ft

### CONTROL

- controller with moisture and ambient temperature sensors (optional)

### INSTALLATION

- install at a temperature above 32 °F

### WARRANTY

- two years

\*Never install on a flat roof. This cable is not designed to remove all the snow from a roof.

PRODUCT	VOLTAGE	LENGTH	POWER	AMPERAGE	PRICE
CODE	VOLTS	FT	WATTS	AMPS	
SCRG1W0150L0030	120	30	150	1.3	71.00
SCRG1W0300L0060	120	60	300	2.5	96.00
SCRG1W0400L0080	120	80	400	3.3	128.00
SCRG1W0500L0100	120	100	500	4.2	157.00
SCRG1W0600L0120	120	120	600	5.0	166.00
SCRG1W0800L0160	120	160	800	6.7	208.00
SCRG1W1000L0200	120	200	1000	8.3	229.00
SCRG1W1200L0240	120	240	1200	10.0	266.00

### ACCESSORY

PRODUCT	DESCRIPTION	PRICE
SCRG-CONTROL	control for SCRG cable with moisture and ambient temperature sensors (120 V @ 10 A)	227.00

# MUAA

## MAKE-UP AIR UNIT

3 YEAR WARRANTY



- THE MOST COMPACT AND LIGHTWEIGHT ON THE MARKET
- MULTIPLE INSTALLATION POSITIONS
- INTEGRATED TEMPERATURE SENSOR – FOR EASY INSTALLATION

### FINISH

- 22-gauge galvanized steel cabinet resistant to corrosion

### MANUFACTURING

- removable electric elements with automatic thermal protection
- manual thermal protection
- built-in temperature sensor
- spring backdraft damper with gasket
- easily accessible, washable aluminum filter

### ELEMENTS

- open, nichrome elements
- modulation of the elements by the SCR technology to maintain a constant temperature using only the required energy

### CONTROL

- wall control (MUAA06 120V-1P and 240/208V-1P models)
- terminal strip for exhaust fan (MUAA06 120V-1P and 240/208V-1P models)
- current switch to synchronize with activation of an exhaust fan (other models)

### INSTALLATION

- 6 in. to 12 in. round duct
- horizontal air flow for all models
- vertical air upflow or downflow on 6 in. to 10 in. models only
- "zero inch" clearance from flammable materials

### WARRANTY

- three years, \*five years on elements

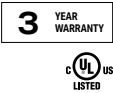
PRODUCT	COLLAR DIAMETER	POWER	VOLTAGE	FLOW	WEIGHT
CODE	IN.	KILOWATTS	VOLTS	CFM	LB
MUAA <sup>XX</sup> YY <sup>YY</sup> ZZ <sup>ZZ</sup> (M)	6*	1.5   2.0	120-1P	45   60	15
	6*	1.5   2.0   3.0	240/208-1P	45   60   90	15
	6	1.5   2.0   3.0	208-3P   347-1P 480-3P   600-3P	45   60   90	27
	8	4.5   5.0   6.0	240/208-1P 208-3P   347-1P 480-3P   600-3P	120   160   180	28
	10	7.0   8.0   9.0 10.0   12.0	240/208-1P 208-3P   347-1P 480-3P   600-3P	210   240   270 300   360	42
	12	8.0   10.0   12.0   14.0 16.0   18.0   20.0	240/208-1P 208-3P   347-1P 480-3P   600-3P	240   300   360 420   480   540   600	45

XX: Collar diameter  
YY: Power in kilowatt (01 = 1.5 kw et 04 = 4.5 kw)  
ZZ: Voltage (11 = 120V-1P | 83 = 208V-3P | 21 = 240/208V-1P | 31 = 347V-1P | 53 = 480V-3P | 63 = 600V-3P)  
(M): A motorized feature is available upon request for 6\* models.  
6\*: These models are offered with a neutral terminal (three-wire connection).  
Refer to the electrical drawing for more details.



# SDHx & SDHxT

## CUSTOM DUCT HEATERS



SDHR



SDHI



SDHF

- IMPROVED ELECTRONIC CONTROLS (OPTIONAL)
- ULTRA-PRECISE ELECTRONIC AIR VELOCITY SENSOR (OPTIONAL - P OPTION)

### FINISH

- 20 to 16 gauge galvanized steel cabinet resistant to corrosion

### MANUFACTURING

- junction box door
- removable electric elements (optional)
- double thermal protections (manual and automatic)
- neoprene gasket (optional)
- Nema 4, Nema 4x and Nema 12 control box (optional)
- stainless steel element housing (optional)

### ELEMENTS

- open, nichrome elements
- tubular in Incoloy 800
- modulation of the elements by SCR technology to maintain a constant temperature using only the required energy

### CONTROL

- built-in temperature limit sensor (TT option)
- electronic air velocity sensor (P option)
- for more electronic control and card options, see the options and controls table
- control voltage: 0-10 V, 2-10 V (4-20mA), 24Vac (PWM), 24Vdc
- heater interlock included

### INSTALLATION

- round duct starting at 4 in. (SDHR model)
- rectangular duct starting at 6 in. x 6 in. (SDHI and SDHF models)
- vertical, horizontal, upflow or downflow position
- "zero inch" clearance from flammable materials

### WARRANTY

- three years

PRODUCT	TYPE OF MODEL	POWER	VOLTAGE	PHASE	DUCT DIMENSIONS
CODE		KILOWATTS	VOLTS	NO.	STARTING FROM (IN.)
SDHI AND SDHIT	INSERTION	UP TO 1000	120 TO 600	1 OR 3	6 X 6
SDHF AND SDHFT	FLANGE	UP TO 1000	120 TO 600	1 OR 3	6 X 6
SDHR AND SDHRT	ROUND	UP TO 1000	120 TO 600	1 OR 3	4

UL certification: 25.5 kW/sq.ft for SDHx and 13 kW/sq.ft for SDHxT

# ELN - EL-NIÑO™

## HAND DRYER

5

YEAR WARRANTY

C

UL

US

LISTED



- NOISE LEVEL AND HEAT CONTROL – FOUR PERSONALIZED MODES
- ENERGY EFFICIENT IN ECONOMICAL AND HARMONY MODES
- HEAVY-DUTY DIE-CAST ALUMINUM ALLOY SHELL
- STYLISH AND COMPACT – LESS THAN 4 INCHES DEEP
- SEMI-RECESSED INSTALLATION – LESS THAN 4 INCHES

### COLORS

- standard: white
- luxury finish: brushed chrome (see price list)
- Orora (optional): refer to p.41

### FINISH

- epoxy-polyester powdercoat or chrome-plated

### MANUFACTURING

- rib reinforced shell, solidly constructed of die-cast aluminum alloy
- lightweight, heavy duty and rustproof shell
- wall bracket with two chrome-plated tamper-proof bolts

### ELEMENT

- nichrome element located in motor section

### CONTROL

- four personalized operating modes to meet your needs
- infrared optical sensor located next to the air outlet activates and deactivates the hand dryer
- 60-second lockout feature is activated if hands are not removed before this time

### INSTALLATION

- surface mounted
- optional semi-recessed installation with depth of 4 inches or less; meets ADA standards (*Americans with Disabilities Act*)

### WARRANTY

- five years, \*three years on electronic components

PRODUCT CODE	POWER (WATTS)†			VOLTAGE VOLTS	AMPERAGE AMPERES	WEIGHT LB	PRICE	
	ELEMENT	MOTOR	TOTAL				W	BC
ELNV0901A	900	550	1450	120	12	9.8	1 373.00	1 493.00
ELNV0902A	900	550	1450	240	6	9.8	1 373.00	1 493.00
ELNV0908A	900	550	1450	208	7	9.8	1 373.00	1 493.00

Add W for white or BC for brushed chrome (consult the optional colors chart or contact your Stelpro representative for all other colors).    † Data obtained in Normal/High mode



# ST302P – ST402P

PROGRAMMABLE ELECTRONIC THERMOSTATS  
FOR BASEBOARDS AND CONVECTORS

3 YEAR WARRANTY



3000 W  
4000 W



- ENERGY SAVINGS UP TO 20%\*
- SIMPLE THREE-STEP PROGRAMMING
- UNBEATABLE ACCURACY
- SAFE DESIGN – SEALED HOUSING
- S<sup>3</sup> MOUNTING PLATE

### COLOR

- white

### FINISH

- molded plastic

### CONTROL

- two-wire connection
- possibility of four events on weekdays and two events on weekends
- protection against power failure (two hours)
- display in Celsius or Fahrenheit

### ACCURACY

- accurate ambient temperature control of  $\pm 1^{\circ}\text{F}$
- CSA C828-13
- temperature sensing with thermistor

### TEMPERATURE RANGE

- 41 to 86  $^{\circ}\text{F}$

### WARRANTY

- three years

\* independent study

PRODUCT	WATTS		VOLTAGE	MAX. AMPERAGE	FREQUENCY	PRICE
CODE	MINIMUM	MAXIMUM	VOLTS	AMPERES	HZ	
ST302P	150/260/300	1500/2600/3000	120/208/240	12.5	60	93.00
ST402P	150/260/300	2000/3475/4000	120/208/240	16.7	60	103.00

Dimensions ST302P: 4.35 in. wide, 4.94 in. high and 1.38 in. deep  
Dimensions ST402P : 4.94 in. wide, 4.94 in. high and 1.38 in. deep

# ST252NP – ST302NP – ST402NP

NON-PROGRAMMABLE ELECTRONIC THERMOSTATS  
FOR BASEBOARDS AND CONVECTORS

PRODUCT	WATTS		VOLTAGE	MAX. AMPERAGE	FREQUENCY	PRICE
CODE	MINIMUM	MAXIMUM	VOLTS	AMPERES	HZ	
ST252NP	150/260/300	1250/2160/2500	120/208/240	10.4	60	64.00
ST302NP	150/260/300	1500/2600/3000	120/208/240	12.5	60	69.00
ST402NP	150/260/300	2000/3475/4000	120/208/240	16.7	60	79.00

Dimensions ST252NP - ST302NP : 4.35 in. wide, 4.94 in. high and 1.38 in. deep  
Dimensions ST402NP : 4.94 in. wide, 4.94 in. high and 1.38 in. deep

# ST402PFF

## PROGRAMMABLE ELECTRONIC THERMOSTAT FOR FAN HEATERS

**3** YEAR  
WARRANTY



**4000 W**



- ENERGY SAVINGS UP TO 20%\*
- SIMPLE THREE-STEP PROGRAMMING
- HEAT "BOOST" FEATURE AND "LOBBY" MODE
- SAFE DESIGN – SEALED HOUSING
- S<sup>3</sup> MOUNTING PLATE

### COLOR

- white

### FINITION

- molded plastic

### CONTROL

- three-wire connection
- fast and easy start of the heat "boost" function
- possibility of four events on weekdays and two events on weekends
- protection against power failure (two hours)
- display in Celsius or Fahrenheit

### ACCURACY

- accurate ambient temperature control of  $\pm 1^{\circ}\text{F}$
- CSA C828-13
- temperature sensing with thermistor

### TEMPERATURE RANGE

- 41 to 86  $^{\circ}\text{F}$

### WARRANTY

- three years

\* independent study

PRODUCT	WATTS		VOLTAGE	MAX. AMPERAGE	FREQUENCY	PRICE
CODE	MINIMUM	MAXIMUM	VOLTS	AMPERES	HZ	
ST402PFF	150/260/300	2000/3475/4000	120/208/240	16.7	60	103.00

Dimensions ST402PFF : 4.94 in. wide, 4.94 in. high and 1.38 in. deep

## ST252NPFF – ST402NPFF

### NON-PROGRAMMABLE ELECTRONIC THERMOSTAT FOR FAN HEATERS

PRODUCT	WATTS		TENSION	MAX. AMPERAGE	FREQUENCY	PRICE
CODE	MINIMUM	MAXIMUM	VOLTS	AMPERES	HZ	
ST252NPFF	150/260/300	1250/2160/2500	120/208/240	10.4	60	64.00
ST402NPFF	150/260/300	2000/3475/4000	120/208/240	16.7	60	79.00

Dimensions ST252NPFF: 4.35 in. wide, 4.94 in. high and 1.38 in. deep

Dimensions ST402NPFF : 4.94 in. wide, 4.94 in. high and 1.38 in. deep

# STZW402 - KI™ Z-WAVE

## ELECTRONIC THERMOSTAT

### FOR SMART HOME

**3** YEAR  
WARRANTY



**4000 W**



- INTEGRATES EASILY WITH A SMART HOME HUB
- CONTROL WITH A MOBILE APPLICATION DEPENDING ON THE HUB
- ENERGY SAVINGS OF 10-15% DEPENDING ON USE\*

#### COMPATIBILITY

- Z-Wave hub required
- Z-Wave Plus certified

#### COLOR

- white

#### FINISH

- molded plastic

#### WATTAGE AND VOLTAGE

- 150 W to 2000 W @ 120 V
- 300 W to 4000 W @ 240 V

#### CONTROL

- two functions available: comfort and economy
- two- or four-wire connection
- outdoor temperature display†
- frost-free warning
- display in Celsius or Fahrenheit
- backlit screen with adjustable intensity

#### ACCURACY

- accurate ambient temperature control of  $\pm 1^{\circ}\text{F}$
- CSA C828-13
- temperature sensing with thermistor

#### TEMPERATURE RANGE

- 41 to 86  $^{\circ}\text{F}$

#### WARRANTY

- three years

\* independent study

† depending on the central controller and its application

PRODUCT	WATTS		VOLTAGE	AMPERAGE	FREQUENCY	PRICE
CODE	MINIMUM	MAXIMUM	VOLTS	AMPERES	HZ	
STZW402WB+	150/300	2000/4000	120/240	16.7	50/60	194.00

Dimensions: 4 7/8 in. wide, 4 7/8 in. high and 1 3/8 in. deep

#### COMPATIBLE WITH



WORKS WITH  
**SmartThings**

for home automated system compatibilities and instructions on connecting to your KI thermostat, visit [www.stelpro.com](http://www.stelpro.com)

# STCP

## FLOOR HEATING ELECTRONIC THERMOSTAT – MULTIPLE PROGRAMMING

3 YEAR  
WARRANTY



3840 W



- INCLUDES 252 PRESET PROGRAMS IN “PRE-PROG” MODE
- ANTICIPATED START
- CHOICE OF FLOOR OR AMBIENT TEMPERATURE CONTROL

### COLOR

- white

### FINISH

- molded plastic

### MANUFACTURING

- built-in GFCI and pilot light (test)
- four-wire connection/DPST with bipolar tripping
- 13 ft floor sensor included\*

### WATTAGE AND VOLTAGE

- maximum of 1920 W @ 120 V
- maximum of 3330 W @ 208 V
- maximum of 3840 W @ 240 V

### CONTROL

- possibility of four events on weekdays and four events on weekends
- anticipated start (the thermostat reaches the desired temperature at the requested time)

- advanced floor or ambient temperature control (your choice)
- protection against power failures (two hours)
- lock option at a maximum temperature setpoint (Security mode)
- display in Celsius or Fahrenheit

### ACCURACY

- accurate ambient temperature control of  $\pm 1^{\circ}\text{F}$
- temperature sensing with thermistor

### TEMPERATURE RANGE

- Ambient mode: 37 to 95 °F
- Floor mode: 37 to 82 °F

### WARRANTY

- three years

\* This thermostat is compatible with some floor sensors sold by other manufacturers.

PRODUCT	WATTS	VOLTAGE	AMPERAGE	FREQUENCY	GFCI	PRICE
CODE	MAX.	VOLTS	AMPERES	HZ	MA	
STCPW5*	1920/3330/3840	120/208/240	16	50/60	5	275.00

\* 5 mA thermostats have an integral Ground-Fault Circuit Interrupter (GFCI) (mandatory in bathrooms and similar room types). Please refer to the electrical and building codes in effect in your region to choose the best thermostat to suit your needs. Dimensions: 3 3/8 in. wide, 4 7/8 in. high and 1 in. deep (total depth: 2 3/16 in.)

# STCNP

## FLOOR HEATING ELECTRONIC THERMOSTAT– SINGLE PROGRAMMING

PRODUCT	WATTS	VOLTAGE	AMPERAGE	FREQUENCY	GFCI	PRICE
CODE	MAX.	VOLTS	AMPERES	HZ	MA	
STCNPW5*	1920/3330/3840	120/208/240	16	50/60	5	230.00

\* 5 mA thermostats have an integral Ground-Fault Circuit Interrupter (GFCI) (mandatory in bathrooms and similar room types). Please refer to the electrical and building codes in effect in your region to choose the best thermostat to suit your needs. Dimensions: 3 3/8 in. wide, 4 7/8 in. high and 1 in. deep (total depth: 2 3/16 in.)

# COMPATIBILITY OF THERMOSTATS AND RELAYS

MODEL	ASAT402ZB, ASMC402, ASMT402	STZW402	ST252NP	ST252NPFF	ST302NP, ST302P	ST402NP, ST402P	ST402NPFF, ST402PFF	STE403NP	STE302R2+	STONP, STCP	STE241 A/RELAIS RE, RM347C OR R841D1036	ET180A/RELAIS* RE, RM347T, RM240T, R841 OR CIRCUIT C24	TH115AF, A/RELAIS CT230GA	SWT1F, SWT2F	OTHER
AB	X	X	X		X	X		X	X		X	X		X	
ABA	X	X	X		X	X		X	X		X	X		X	
AMIR	X	X	X		X	X		X	X		X				
ARUH	X			X			X	X	X		X	X		X	
ARWF	X			X			X	X	X		X	X		X	
SCPT															X
SCR	X	X	X		X	X		X	X		X	X		X	
SCRG															X
SCU										X			X		
ASGH	X						X	X	X		X	X		X	
ASHU	X		X		X	X			X		X	X		X	
ASIRH															SIRHC402-1
ASK	X	X		X			X	X	X		X	X		X	
ASKS	X			X			X	X	X		X	X		X	
ASOA	X			X			X	X	X						
ASOR	X	X	X		X	X		X			X				
ASORB	X			X			X	X	X						
ASPR	X	X	X		X	X		X	X		X	X		X	
SSFP															X
SSFR															X
AWF	X			X			X	X	X		X	X		X	

The suggested thermostats may not be compatible with certain voltages, powers and control circuits. Consult the thermostat's user's guide for more information on compatibility.

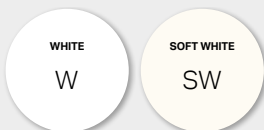
\* For SHU, VUH, CBH and SDC models, please consult customer service for the exceptions.



# LET YOURSELF BE INSPIRED

From timeless classics to the latest trends, whether you want to create a relaxing or vibrant environment, Stelpro offers the largest color assortment on the market. Let your imagination run wild!

## STANDARD COLORS



## SPECIAL FINISH\*\*\*



## ORORA



15% surcharge on list price [25% for Brava (AB) and Prima (ASPR) baseboards]

## CUSTOM COLORS†

YOUR HEART IS SET ON ANOTHER COLOR? WE CAN REPLICATE ANY COLOR!

\* Certain models are offered standard in these colors (ex. ASHU Series). In such cases the color premium and set up charge do not apply.

\*\* Certain models are offered standard in these colors (ex. ASGH and ASCH Series). In such cases the color premium and set up charge do not apply.

\*\*\*Availability and price depending on models.

†Contact your Stelpro representative for pricing.

Stelpro reserves the right to modify description, manufacturing specifications or prices without prior notice. The premium applies to all painted units, no matter if there are different models of units or different colors. The set up charges are applicable for each Orora or custom color ordered. For further details on custom colors, whether chart or off-chart, contact your sales representative or customer service. These colors are only reproduced for information purposes. They may differ from the real colors. Some of them are metallic and cannot be accurately reproduced in print. **Returns are not accepted for orders of products with optional colors.** For all the latest models and updated prices, please refer to our website at [www.stelpro.com](http://www.stelpro.com).

# SERIES COMPARISON CHART

DESCRIPTION	STELPRO	BERKO	Q-MARK	TPI/MARKEL	KING	CADET	DIMPLEX
High-End Baseboard	ABA	CBD	CBD	----	----	----	----
Compact High End Baseboard	ASPR	----	----	----	----	----	LC
Baseboard	AB	2500	2500	2900	K	F	DPEG
Electronic Convactor	AMIR	----	----	----	----	----	----
Bathroom Fan Heater	ASOA	----	----	----	----	----	PCH
Res Wall Fan Heater	ARWF	SRA/SED	CWH/SED	4300/3200/HF	WHF/W	----	----
Cove Heater	SCR	RCC	RCC	CV/CVX	KCV	----	----
Kick Space Heater	ASKS	QTS	QTS	TSH	KT	UC	CKH
Ceiling Fan Heater	ASK	QCH	QCH	3000	WHFC	----	----
Ceiling Fan Heater	ASGH						
Multipurpose Portable Heater	ASCH	BRH	BRH	ICH/5800	PGH	CGWH	DCH/EMC
Wall Fan Heater	AWF	VFK/FRA	CWH/LFK	3310/3320	EFW/LPW	NLW	RFI
Commercial & Residential Unit Heater	ARUH	HUH524TA	MWUH5004	HF5605T	EKB	----	CUH05B31T
Commercial & Industrial Unit Heater	ASHU	HUH/HUHAA	IUH/MUH	5100	KB	----	EUH
Infrared Radiant Heater	ASIRH	VRP/VRS	FRP/FRS	TH/THSS	TW	----	----
Universal Heating Cable	SCU	----	----	----	FC	----	----
Roof And Gutter De-Icing Heating Cable (CW)	SCRG	----	----	----	CWR	----	----
Freeze Protection Preassembled Cable (SR)	SSFP	----	----	----	SRP	----	----
Freeze Protection Cable Reel (SR)	SSFR	----	----	----	SR	----	----

Note: Cross reference from one manufacturer to another is approximate as all manufacturers have different components, design characteristics, etc.  
SR = Self-Regulating CW = Constant Wattage



**STELPRO.COM**  
**1-844-STELPRO**

1041 PARENT ST.  
SAINT-BRUNO-DE-MONTARVILLE, QC  
J3V 6L7 CANADA



Platinum  
member

