

# SIRH – ZENITH™

## INFRARED RADIANT HEATER



# ZENITH™



## COMFORTABLY RADIANT!

Warm up your summer nights and autumn days with our Zenith infrared radiant heater. It's perfect for terraces, outdoor waiting areas, arenas and spas. It can even be used in hard-to-heat areas such as factories. With its 14-gauge aluminum cabinet and stainless steel grille, the Zenith is lightweight yet rugged. Now, you can create your own comfortable environment, any time of the year.

- **GENERATES INSTANT HEAT**
- **COMPACT, LIGHTWEIGHT, STURDY AND EASY TO INSTALL**
- **CLEAN ELECTRICAL ENERGY WITH NO AIR DISPLACEMENT**
- **WEATHER-RESISTANT MODELS AVAILABLE**
- **347 V MODEL AVAILABLE**

### COLOUR

- black

### FINISH

- super-resistant polyester powdercoat

### MANUFACTURING

- 14-gauge aluminum housing
- stainless steel grille
- specialized embossed aluminum reflectors that optimize radiant efficiency and reduce glare
- standard mounting bracket (included)

### LAMP

- quartz lamp with glare-reducing filter and tungsten filament produces short-wave infrared heat
- 80% radiant efficiency

### CONTROL

- electronic dimmer with timer (optional) (SIRHC402-1 or independent switch\*)

### INSTALLATION

- on wall or ceiling with mounting bracket (included) or pole mounted (adaptor not provided), in accordance with clearances and installation heights as specified in the installation manual

### WARRANTY

- three years

\* The power feeding the units can be reduced using controls that meet the following requirements: the controls must be able to handle inductive and resistant loads. They must also have circuits to regulate the start-up current since this type of appliance generates a high start-up current.

### IDEAL FOR:

terrace, warehouse, factory, outdoor waiting area, spa

### FOR MAXIMUM EFFICIENCY

ELECTRONIC DIMMER WITH TIMER (OPTIONAL)  
SIRHC402-1



# °STELPRO

Stelpro reserves the right to modify at any time the description, manufacturing, or price of its products. Additionally, Stelpro may apply restocking fees or refuse a refund based on one or more of the following criteria: optional color, custom product, assembly with low-demand options. For the latest product information and prices regarding the products, please visit the website [www.stelpro.com](http://www.stelpro.com).



# TECHNICAL SPECIFICATIONS

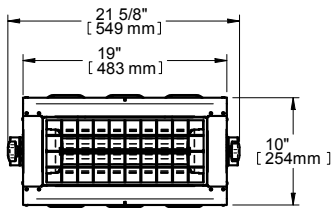
PRODUCT		WEATHER-RESISTANT		POWER	VOLTAGE	FREQUENCY	LENGTH		HEIGHT		DEPTH		WEIGHT	
CODE	PRICE	CODE	PRICE	WATTS	VOLTS	HZ	MM	IN.	MM	IN.	MM	IN.	KG	LB
SIRH1501W	975.00	SIRH1501WR	1 121.00	1500	120	60	483	19	254	10	143	5 5/8	5	11
SIRH2002W	975.00	SIRH2002WR	1 121.00	2000/1600	240/208	60	483	19	254	10	143	5 5/8	5	11
SIRH4002W	1 205.00	SIRH4002WR	1 355.00	4000/3200	240/208	60	483	19	403	15 7/8	143	5 5/8	6.25	13.8
SIRH4203W	1 469.00	SIRH4203WR	1 618.00	4180	347	60	483	19	554	21 13/16	143	5 5/8	7.4	16.3
SIRH6002W	1 567.00	SIRH6002WR	1 712.00	6000/4800	240/208	60	483	19	554	21 13/16	143	5 5/8	7.4	16.3

# ACCESSORIES

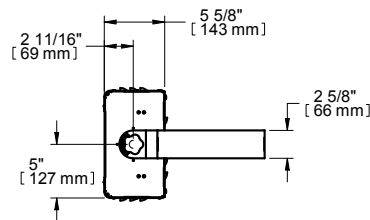
PRODUCT	DESCRIPTION	PRICE
KIT-ESIRH151	infrared replacement element 1500 W @ 120 V (SIRH1501 and SIRH4203 model)	112.00
KIT-ESIRH202	infrared replacement element 2000 W/1600 W @ 240 V/208 V	112.00
KIT-SIRH-SUP1	expandable support from 20 in. to 34 in. – 508 mm to 864 mm	468.00
SIRHC402-1	electronic dimmer with timer (silver), 4000 W/3300 W/2000 W @ 240 V/208 V/120 V max	253.00

# TECHNICAL DRAWINGS

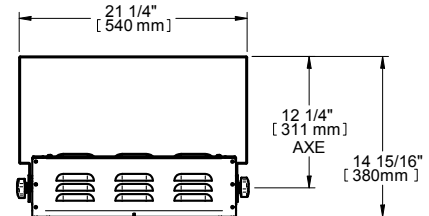
## 1500 W AND 2000 W MODELS



FRONT

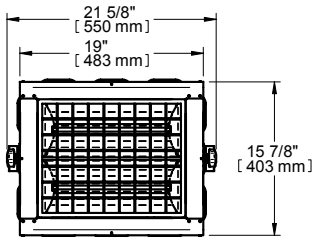


SIDE

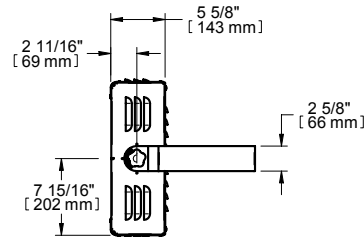


TOP

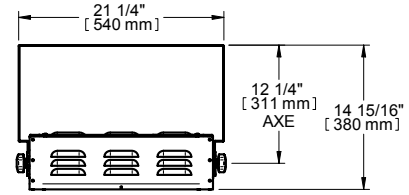
## 4000 W MODEL



FRONT

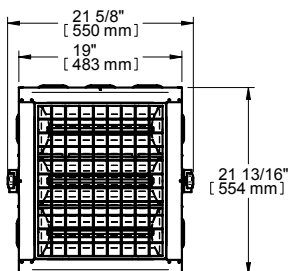


SIDE

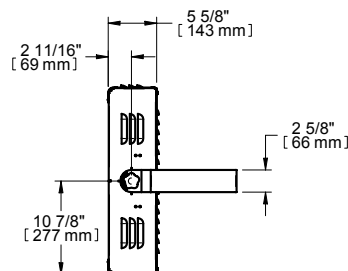


TOP

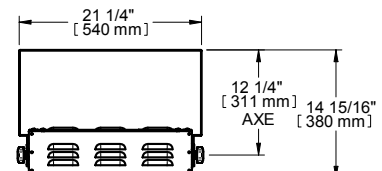
## 4180 W AND 6000 W MODELS



FRONT



SIDE



TOP