

WARNING

IMPORTANT INSTRUCTIONS

WARNING: TO REDUCE THE RISK OF FIRE, ELECTRIC SHOCK, OR INJURY TO PERSONS, OBSERVE THE FOLLOWING:

1. Use this unit only in the manner intended by the manufacturer. If you have questions, contact the manufacturer.
2. Before servicing or cleaning unit, switch power off at service panel and lock the service disconnecting means to prevent power from being switched on accidentally. When the service disconnecting means cannot be locked, securely fasten a prominent warning device, such as a tag, to the service panel.
3. Installation work and electrical wiring must be done by qualified person(s) in accordance with all applicable codes and standards, including fire-rated construction.
4. Sufficient air is needed for proper combustion and exhausting of gases through the flue (chimney) of fuel burning equipment to prevent back drafting. Follow the heating equipment manufacturer's guideline and safety standards such as those published by the National Fire Protection Association (NFPA), and the American Society for Heating, Refrigeration and Air Conditioning Engineers (ASHRAE), and the local code authorities.
5. When cutting or drilling into wall or ceiling, do not damage electrical wiring and other hidden utilities.
6. Ducted fans must always be vented to the outdoors.
7. If this unit is to be installed over a tub or shower, it must be marked as appropriate for the application and be connected to a GFCI (Ground Fault Circuit Interrupter) – protected branch circuit.
8. Ensure the ceiling thermal insulation where the unit is installed is less than R40. (For installation in Canada only.)

WARNING: TO REDUCE THE RISK OF FIRE OR ELECTRIC SHOCK, DO NOT USE THIS FAN WITH ANY SOLID-STATE SPEED CONTROL DEVICE.

CAUTION:

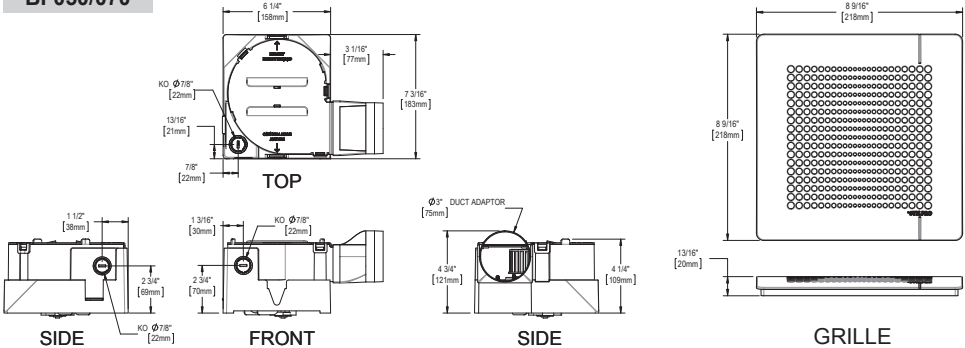
1. For general ventilating use only. Do not use to exhaust hazardous or explosive materials and vapours.
2. If these instructions are not followed, the warranty will be considered null and void and the manufacturer deems no further responsibility for this product.
3. If the installer or the user modifies the unit, he will be held responsible for any damage resulting from this modification.
4. For connexions, use only 15A at 120V certified switches.
5. This unit must be properly grounded.
6. Not for use in kitchen.
7. This unit should be installed at least 2.1 m (7 feet) above the floor level.
8. The product is not intended for connection to rigid metal conduit.

SAVE THESE INSTRUCTIONS

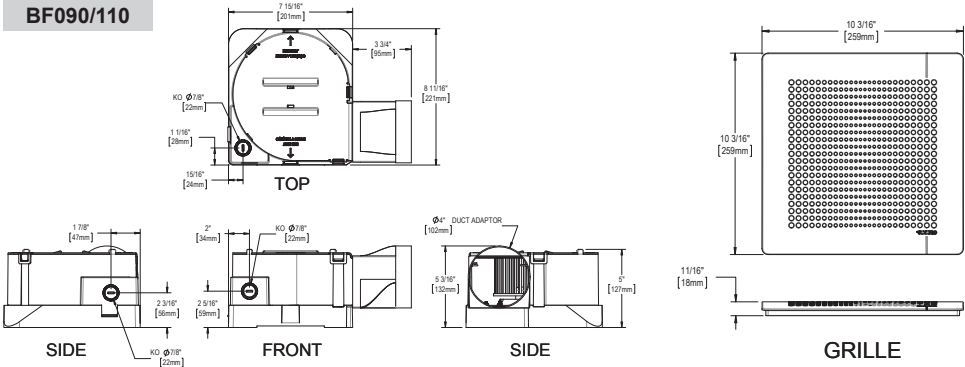
Note: When a part of the product specification must be changed to improve operability or other functions, priority is given to the product specification itself. In such instances, the instruction manual may not entirely match all the functions of the actual product. Therefore, the actual product and packaging, as well as the name and illustration, may differ from the manual.

TECHNICAL DRAWINGS

BF050/070

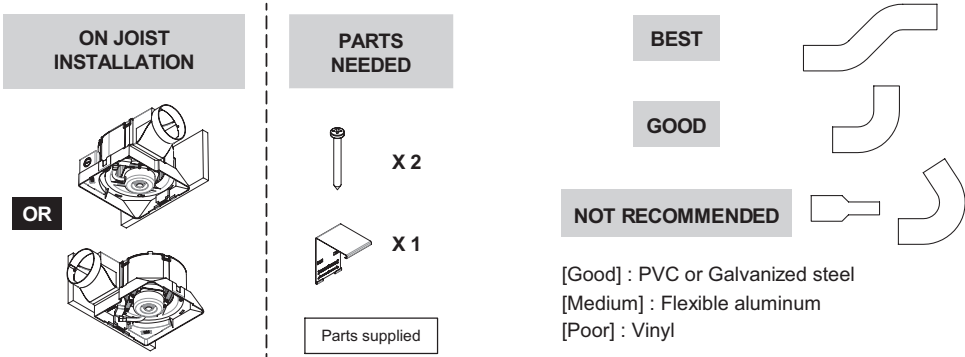


BF090/110

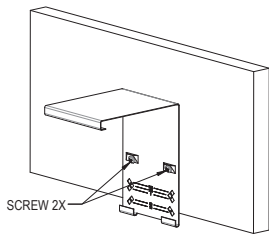


INSTALLATION

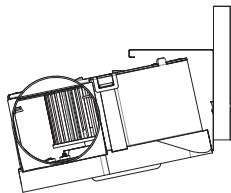
CASING INSTALLATION



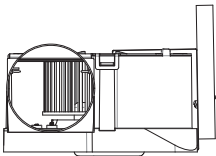
CASING INSTALLATION



INSTALL THE SUPPORT ON THE JOIST AT THE NEEDED HEIGHT DEPENDING OF THE GYPSUM THICKNESS.

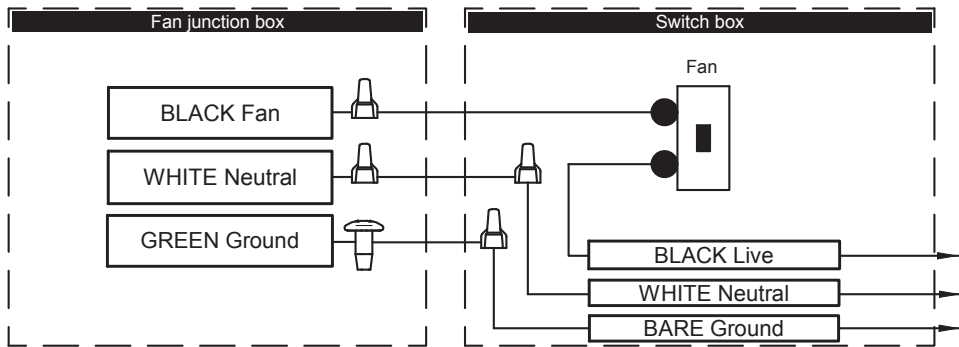


PUT THE CASING ON THE SUPPORT BY INCLINING IT.

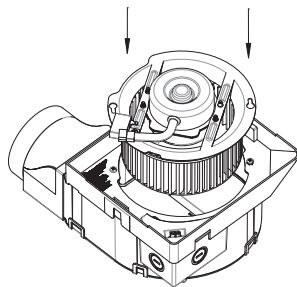


PUSH UP THE CASING.

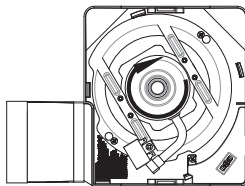
WIRING DIAGRAM



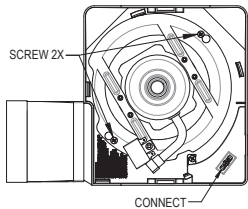
MOTOR INSTALLATION



INSERT THE MOTOR ASSEMBLY IN THE CASING WHILE ALIGNING THE HOLES WITH THE SCREWS.



TURN CLOCKWISE.

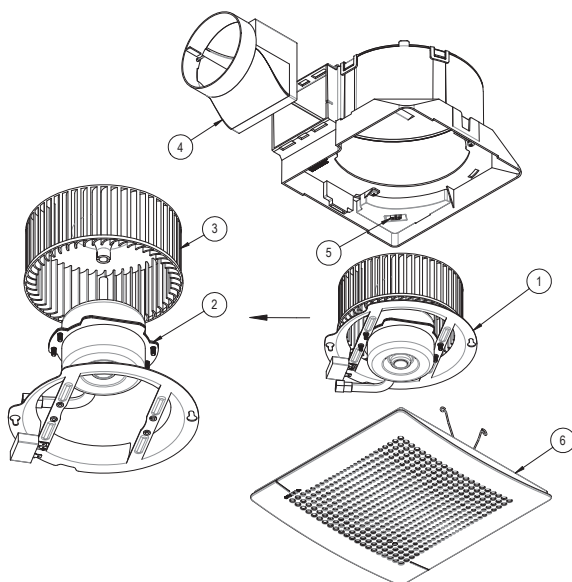


SCREW THE PLATE AND CONNECT THE MOTOR.

DISMANTLE IN REVERSE ORDER

REPLACEMENT COMPONENT LIST

REF. #	PART #	DESCRIPTION
1	SA-BF-0006	BF050 MOTOR SUBASSEMBLY
1	SA-BF-0007	BF070 MOTOR SUBASSEMBLY
1	SA-BF-0008	BF090 MOTOR SUBASSEMBLY
1	SA-BF-0009	BF110 MOTOR SUBASSEMBLY
2	MO-061	MOTOR 44W 1 SPEED 120V 60Hz CCW (WITH 3 PINS CONNECTOR) FOR BF
2	MO-062	C-FRAME MOTOR 120V, 60Hz, 50 CFM
2	MO-063	C-FRAME MOTOR 120V, 60Hz, 70 CFM
3	BLO-BF	BF IMPELLER
3	BLO-BFQ	BFQ IMPELLER
4	BDD-008	BACKDRAFT DAMPER 4" FOR BFQ & BF090/110
4	BDD-009	BACKDRAFT DAMPER 3" FOR BF
5	HAR-029	HARNESS, BF CUSTOMER INTERFACE
6	GRI-BF050/070	BF050/070 GRILLE SUBASSEMBLY
6	GRI-BF090/110	BF090/110 GRILLE SUBASSEMBLY



LIMITED WARRANTY

BF series models are warranted for **1 year**. If at any time during this period the unit becomes defective, it must be returned to its place of purchase with a copy of the invoice, or simply contact our customer service department (with a copy of the invoice in hand). The warranty is limited to the factory repair or the replacement of the unit, and does not cover the cost of disconnection, transport, installation, and component replacement. Any damages or failures caused by abuse, misuse, abnormal usage, faulty installation, or improper maintenance (other than that provided by Stelpro) will not be covered by this warranty. Stelpro Design disclaims any responsibility for bodily injuries, losses of income and material damages caused directly or indirectly by the product. Some States and provinces do not allow the exclusion or limitation of incidental or consequential damages and some States do not allow limitations on how long an implied warranty lasts, so these exclusions or limitations may not apply to you. This warranty gives you specific legal rights and you may have other rights which vary from State to State and province to province.

BF series models are warranted for **1 year**. If at any time during this period the unit becomes defective, it must be returned to its place of purchase with a copy of the invoice, or simply contact our customer service department (with a copy of the invoice in hand). The warranty is limited to the factory repair or the replacement of the unit, and does not cover the cost of disconnection, transport, installation, and component replacement. Any damages or failures caused by abuse, misuse, abnormal usage, faulty installation, or improper maintenance (other than that provided by Stelpro) will not be covered by this warranty. Stelpro Design disclaims any responsibility for bodily injuries, losses of income and material damages caused directly or indirectly by the product. Some States and provinces do not allow the exclusion or limitation of incidental or consequential damages and some States do not allow limitations on how long an implied warranty lasts, so these exclusions or limitations may not apply to you. This warranty gives you specific legal rights and you may have other rights which vary from State to State and province to province.