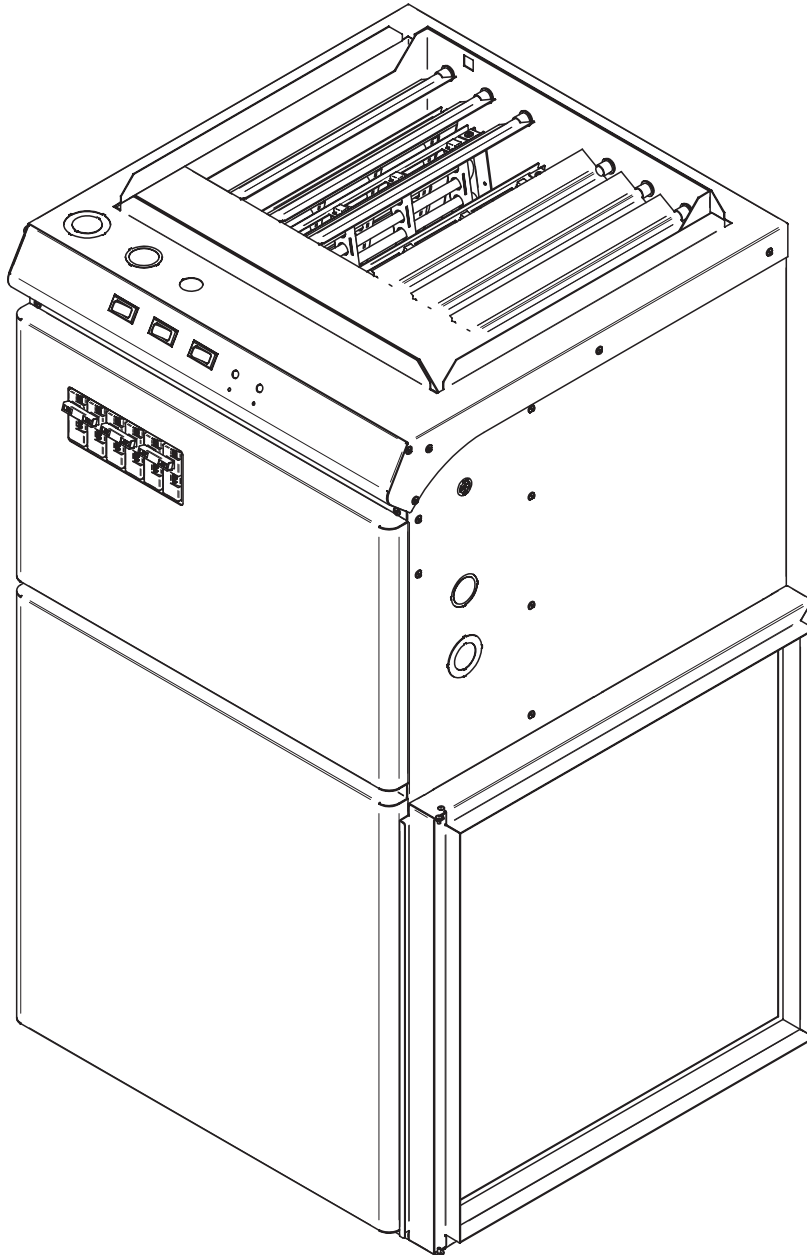




INSTALLATION GUIDE

SEF SERIES ELECTRIC FURNACE

REPLACEMENT COMPONENT LIST INCLUDED



This unit
complies with
the cCSAus
standards



This unit is approved according
to the Canadian and American
manufacturing standards.

**This section must be read carefully by the installer.
The installer must also read the user's guide since it contains other important information.**



WARNING

Before installing and operating this product, the user and/or installer must read, understand and follow these instructions and keep them handy for future reference. If these instructions are not followed, the warranty will be considered null and void and the manufacturer deems no further responsibility for this product.

This product must be installed by a qualified person and connected by a **certified electrician**, according to the **electrical and building codes** effective in your region.

The following instructions must be adhered to in order to avoid personal injuries or property damages, serious injuries and potentially fatal electric shocks.

Make sure that all screws and electrical terminal connections are tightly secured before operating the unit in case they would have loosened during transportation.

Protect the heating unit with the appropriate circuit breaker or fuse, in accordance with the nameplate.

Make sure the line voltage (volt) is consistent with that indicated on the unit's nameplate.

This unit must be **grounded**.

Switch off the power at the circuit breaker/fuse before installing, repairing and cleaning the unit.

Make sure the unit is appropriate for the intended use (if needed, refer to the product catalog or a representative).

If the unit's capacity is insufficient for the size of the house, it will be in operation continuously, and may become prematurely defective.

Respect distances and positions indicated in the installation section.

If the installer or the user modifies the unit, they will be held responsible for any damage resulting from this modification, and the CSA certification could be void.

This unit must not come into contact with a water source and must be protected from splashes (e.g. a wet mop). Do not use it if any part has been immersed. Moreover, do not turn it on or off when standing in water or if your hands are wet.

When cutting a piece of steel for the installation of the return duct, do not damage electrical wiring of the unit.

Because this unit is hot when in use, it may pose risks even in normal operation. Therefore, be **careful and responsible** when using it. To avoid burns, do not let bare skin touch hot surfaces. Let the unit cool down for a few minutes before handling it (it stays warm for some time after shut-down).

Never block air vents. This obstruction could lead to overheating, which could result in a fire.

Do not insert or allow foreign objects to enter any air vent as this may cause electric shocks, fires, or damages to the unit.

This unit has hot and arcing or sparking parts inside. It is not designed to be used or stored in wet areas or areas containing flammable liquids, combustible materials or corrosive, abrasive, chemical, explosive and flammable substances such as, but not limited to, gasoline, paint, chlorine and cleaning products.

Some areas are dustier than others. Thus, it is the user's responsibility to evaluate if the **filter must be changed** based on it. Accumulated dirt can lead to a component malfunction or discoloration (yellowing). It may cause a fire hazard if not installed and maintained in accordance with these instructions.

Thermal protection activation indicates that the unit has been subjected to abnormal operating conditions. If the thermal protection remains activated or activates and deactivates repeatedly, it is recommended that a qualified electrician or a certified repair centre examine the unit in order to make sure it is not damaged. (Refer to the limited warranty).

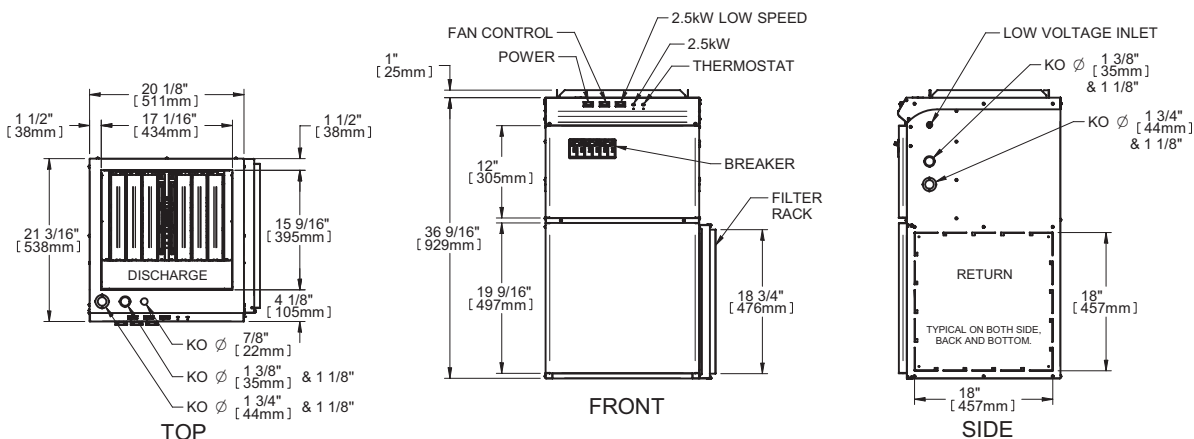
If the unit is damaged or defective, cut off power supply at circuit breaker/fuse and call a certified repair centre. (Refer to the limited warranty).

Label all wires prior to disconnection when servicing controls. Wiring errors can cause improper and dangerous operation.



Note: When a part of the product specification must be changed to improve operability or other functions, priority is given to the product specification itself. In such instances, the instruction manual may not entirely match all the functions of the actual product. Therefore, the actual product and packaging, as well as the name and illustration, may differ from the manual.

TECHNICAL DRAWINGS



SPECIFICATIONS

ELECTRIC FURNACE									
TYPE	VOLTS	KW	AMP	HP	LENGTH (IN.)	WIDTH (IN.)	DEPTH (IN.)	LB	KG
SEF1021B	240/208	10/7.5	44/38	1/3	36 9/16	20 1/8	21 3/16	100	45
SEF1521B	240/208	15/11.2	65/56	1/3	36 9/16	20 1/8	21 3/16	100	45
SEF1821B	240/208	18/13.5	78/67	1/3	36 9/16	20 1/8	21 3/16	100	45
SEF2021B	240/208	20/15	86/75	1/3	36 9/16	20 1/8	21 3/16	100	45
SEF2321B	240/208	23/17.2	98/85	1/3	36 9/16	20 1/8	21 3/16	100	45
SEF2721B	240/208	27/20.2	118/102	1	36 9/16	20 1/8	21 3/16	105	48
SEF3021B	240/208	30/22.5	130/113	1	36 9/16	20 1/8	21 3/16	105	48

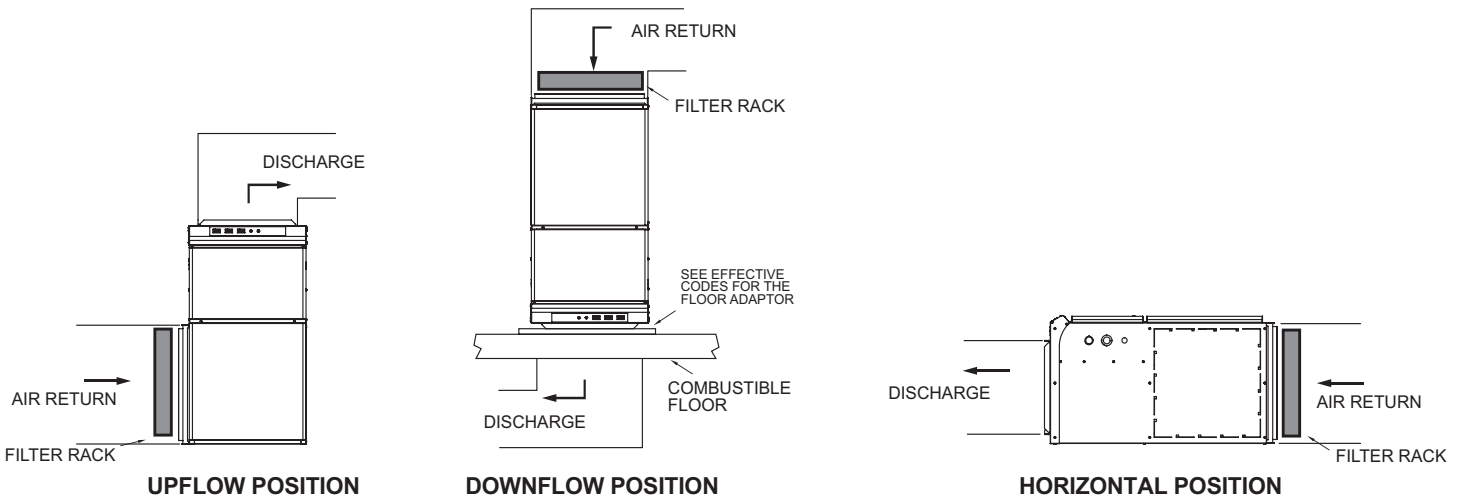
N.B. Please consult appendix 1 for more technical specifications

INSTALLATION

N.B. Cut off power supply at circuit breaker/fuse before proceeding to the installation.

Please note that each furnace is factory inspected before shipping in order to ensure that every component is operating efficiently.

The "SEF" series electric furnace is available in several models of various heating capacity (from 10 to 30 kW). All these models adapt easily to many applications and are suitable for horizontal, upflow and downflow operations (see the figure below). When installed in vertical downflow position, use only "L" or "T" shaped plenum without openings or registers directly below the unit.



LOCATION

You must install the furnace on a dry and solid base, in an area free of flammable liquids or vapors and combustible materials. You must indicate to the furnace's user the location of the switches and disconnects. He must be able to quickly identify them in case of an emergency. Moreover, the furnace should be located as centrally as possible in the area to heat in order to optimize air dissipation in all the rooms.

CLEARANCE

This furnace is approved for "zero inch" clearance. Meaning that you can install it directly against a wall. Ducts for models of 23 kW and less can also be installed with a zero inch clearance (0 inch). However, ducts for models of 27 kW and more must have a 1-inch clearance for the first 36 inches of duct. From 37 inches, this clearance can be reduced to 0 inch. Please refer to the codes effective in your region if you have any questions concerning clearances.

Since it is necessary to open the door in the front to perform the furnace maintenance inspection, you must leave at least a 24-inch clearance in front of this door.

DUCTS AND FILTERS

Ducts must be designed to deliver airflows to the specified external static pressure. You should insulate the ducts crossing non-heated areas. Moreover, use flexible return and supply connectors in order to avoid vibrations as much as possible. To make your furnace even quieter, follow these instructions:

1. Cover the vertical return and supply ducts with soundproofing material.
2. Install at most one or two elbows between registers and the return and supply connectors.
3. Install flexible hangers to suspend the ducts.
4. Install baffles in elbows with a small radius of curvature.

All "SEF" series models are equipped with a filter rack (including the filter) that you will find on top of the furnace. You can install this rack on one of the three external sides of the furnace or at its bottom. Using snips, cut the selected rack opening following the slots and holes, and screw the filter rack on it.

OPTIONAL ACCESSORIES

The furnace is equipped with all devices required for the addition of an air-conditioner or heat pump (except the heat-cool thermostat). The refrigerant and drainage pipes must be installed either in the furnace's supply or return duct and should not prevent you from removing the front door of the furnace.

You can also install a thermostat with an outdoor sensor or a two-stage thermostat to control your furnace. To do so, you must refer to the instructions supplied with the thermostat (see also the illustrations below) as well as the furnace's wiring diagram.

When the electric furnace is used in combination with a wood heating unit, you must connect the thermostat of the wood heating unit across low voltage terminals R and G of the furnace. This thermostat will automatically turn the blower of the furnace on.

N.B. Please note that if one of these accessories is installed, you must refer to the appropriate guide.

ELECTRICAL CONNECTIONS OF THE FURNACE

Note that this product must be connected by a qualified electrician according to the electrical and building codes effective in your region.

This furnace must be connected to a 240/208 volt power source. For 240V power supply, either copper or aluminum wires can be used, except for 27 and 30W models where only copper wire can be used (see appendix 1). If you want to energize the furnace at 208 VAC, you must change a connection on the transformer's terminal board (see appendix 1). Refer to the local and national electrical codes to know which wire size, fuses and circuit breakers are required.

You can also connect a 24 VAC humidifier directly at the 24 VAC power supply of the furnace, e.g. on R and C terminals of the terminal block.

N.B. To prevent the humidifier from operating when ventilation is not activated, some manufacturers offer a ventilation detector (optional). If this option is not available, you must connect the humidifier on W1 and C terminals of the terminal block. In this case, the humidifier will only operate when the blower (in the heating mode) is activated.

ELECTRICAL CONNECTION OF THE THERMOSTAT

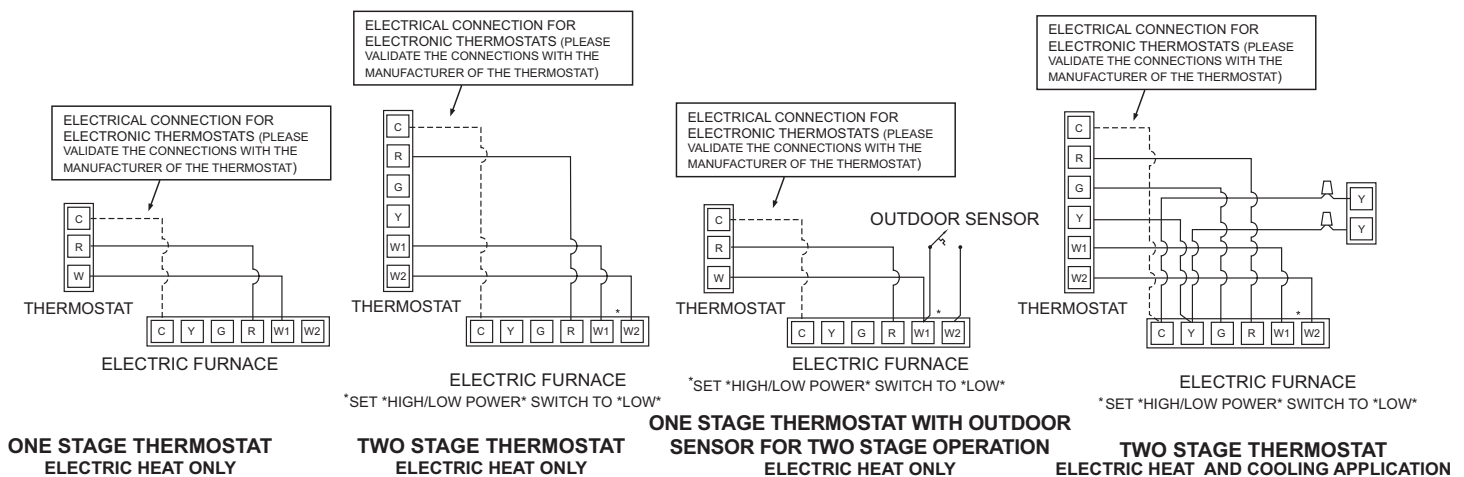
The thermostat must be mounted on a connection box, at around 1.5 m (5 feet) above the floor level, on a section of the wall exempt from pipes or air ducts.

Do not install the thermostat in a location where temperature measurements can be altered. For example:

- close to a window, on an external wall, or close to a door leading outside;
- exposed directly to the light or heat of the sun, a lamp, a fireplace or any other heat source;

- close or in front of an air outlet;
- close to concealed ducts or a chimney;
- in a location with poor air flow (e.g. behind a door), or with frequent air draft conditions (e.g. head of stairs).

Seal the wall openings in order to minimize the drafts which can alter temperature measurements. Read the user's guide of the thermostat carefully and refer to the following illustrations to connect the thermostat.



OPERATING SEQUENCE

HEATING MODE

1. The thermostat closes the R-W1 circuit, which activates the sequencers and the elements of the first stage one by one. The blower starts-up at the first selected speed (the lowest speed) as soon as the first element is activated.
2. There is a short time before the activation of a sequencer, which starts the blower at the second selected speed (the highest speed). The elements of the second stage are then activated one by one (except for 10 kW) (the power selector must be set at High).

AIR-CONDITIONING MODE

The furnace supplies the necessary 24 V a.c. allowing the thermostat relay to order the air-conditioner's compressor relay.

HEAT PUMP

If installing a heat pump, you must wire the unit accordingly to prevent simultaneous operation of the electric elements and the heat pump. Refer to the instructions supplied with the thermostat or the "Fossil Fuel Kit" to properly connect the furnace and heat pump.

If the electric elements of the furnace and the heat pump run simultaneously, they could overheat. The safety devices of the units would then be activated unnecessarily.

START-UP PROCEDURE

Please make sure the operating sequence has been duly followed and that all the electric elements operate efficiently.

The blower motor has 4 speeds (the 27 and 30 kW models have 3 speeds). They are factory adjusted according to the desired airflow. (Please refer to **APPENDIX 1** for more details)

At any time, you can change the motor speeds according to the desired airflow.

AIRFLOW ADJUSTMENT

When all the heating elements are activated, check the airflow by taking the following measurements:

- total amperage of all the heating elements
- voltage at the furnace
- supply air temperature at a point that is not exposed to heat radiation from the elements
- return air temperature

The airflow can be roughly measured using the measurements taken previously. You must use the following formulas:

$$\text{LITER/S} = \frac{0.82 \times \text{amp.} \times \text{volts}}{\Delta T (^{\circ}\text{F})}$$

$$\text{CFM} = \frac{3.1 \times \text{amp.} \times \text{volts}}{\Delta T (^{\circ}\text{F})}$$

$$\text{OTHER METHOD} \quad \text{CFM} = \frac{\text{kW} \times 3000}{\Delta T (^{\circ}\text{F})}$$

ANTICIPATOR

If you install a thermostat equipped with a heat anticipator, refer to the user's guide of the thermostat to adjust it.

Using an ampmeter, measure the current on the single stage thermostat.

PROCEDURE TO FOLLOW

1. Set the anticipator to its highest setting (ineffective).
2. Disconnect the wire from the W1 terminal of the furnace and connect an ampmeter between the W1 terminal and the wire mentioned.
3. Increase the temperature set point of the thermostat in order to start the heat and let the furnace run for 3 or 4 minutes in order to reach its maximum capacity.
4. Once the current is stable, take the reading and adjust the anticipator to that value. Set the anticipator to a higher value if longer heating cycles are required.

VERIFYING THE HIGH LIMIT THERMAL PROTECTIONS

When the furnace has run at full capacity for 10 minutes, block the supply and return air openings and measure the supply air temperature at a point that is not exposed to heat radiation from the elements. The elements are supposed to shut down one by one before the temperature exceeds 95°C-200°F.

MAINTENANCE

N.B. In order for the warranty to be valid, the unit must be cleaned regularly.

Cut off power supply at circuit breaker/fuse before cleaning the unit. Use a soft rag for dusting. When cleaning, use only a damp rag and non-abrasive dish soap. Do not use abrasive or chemical cleaners because they may damage the finishing. If the unit is used in a very dusty location, use a vacuum brush to remove dust and other foreign objects from the grilles. Note that cigarette smoke could yellow the discharge grille and that the best way to prevent it is to clean the unit on a regular basis.

Do not use cleaning products identified with these symbols:



N.B.

Note that there is electrical current linked to the unit even if the thermostat is set off. This means that there is a risk of electric shock as long as the unit is energized.

PREVENTIVE MAINTENANCE

Do not try to repair your furnace yourself. Call a qualified technician. However, before calling a technician, check the following points.

1. Make sure fuses or circuit breakers are activated.
2. Adjust the temperature set point of the thermostat above the ambient temperature. If heating does not start, cut off the power supply and call a technician.

N.B. When calling a technician for maintenance or to order a replacement part, specify the model of your furnace as well as its serial number.

AIR FILTER

Excessive dust or dirt accumulation can block the airflow, forcing the unit to work harder to maintain the desired temperature. Therefore, it uses more energy and increases heating costs.

Since the air filter supplied is disposable, you should replace it two to four times a year, according to the model used and the installation area. Dirtier areas can require more than four filter changes.

To replace a dirty filter, open the access door to the filter, remove the old filter and insert the new one inside the rack. Make sure the new filter has the same technical specifications and size as the previous one.

N.B. Never operate the unit without a filter in place.

Every time a filter is changed, you should check the following points.

- Excessive accumulation of dirt or dust on furnace components.
- Damaged components or surfaces.
- Presence of water inside or outside the furnace.

If you encounter any of these problems, do not operate the furnace. Call a qualified technician.

BLOWER

The blower motor is sealed and permanently lubricated, so it is not necessary to lubricate it.

Even if you change the filter frequently, the blower's blades and motors will become dust laden after a few months. The entire blower assembly should be inspected annually. If needed, vacuum out the dust. If you cannot clean the blower without removing it from the furnace, this service must be performed by a qualified technician.

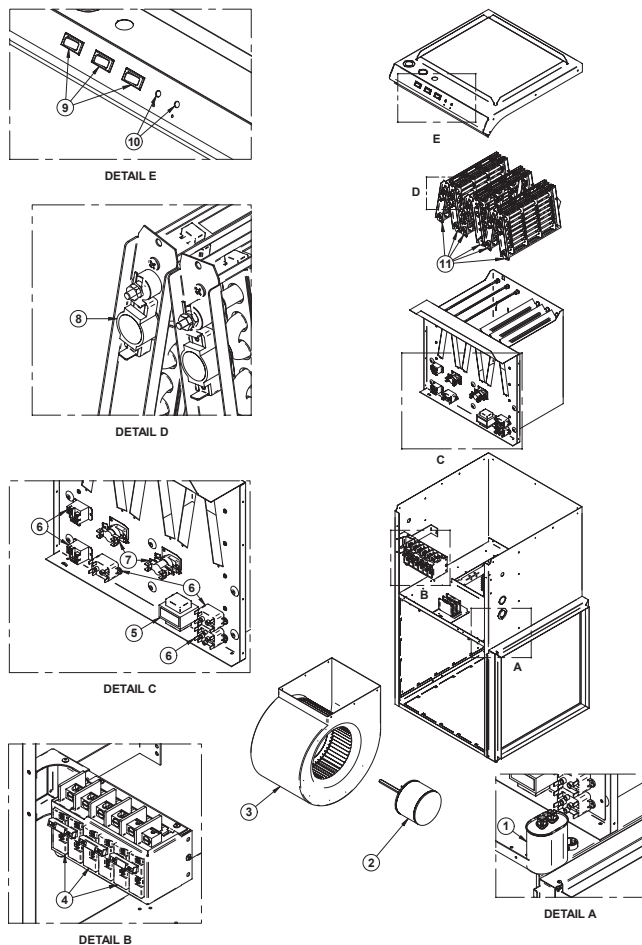
TROUBLESHOOTING

PROBLEM	DEFECTIVE PART OR PART TO CHECK
The unit does not work	<ul style="list-style-type: none"> - Defective thermostat, wrong thermostat setting or positioning - Open circuit breaker or fuse - Faulty connections - Faulty motor or condensator - Faulty blower control switch - Faulty sequencers - Faulty transformator
The unit runs continuously	<ul style="list-style-type: none"> - Defective thermostat, wrong thermostat setting or positioning - Heat losses greater than the unit's capacity - Blower control switch is defective or on the continuous position - Faulty sequencers - Thermostat wire incorrectly connected to the furnace - Faulty 24 volt relay
The unit cycles under control of the thermal protection (overheat indicator)	<ul style="list-style-type: none"> - Blocked air vents - Defective motor
Overheating	<ul style="list-style-type: none"> - Defective thermostat, wrong thermostat setting or positioning - Defective motor
The breaker trips when the heater is turned on	<ul style="list-style-type: none"> - Faulty connections - Voltage higher than that indicated on the nameplate
Elements are on, but the motor does not work	<ul style="list-style-type: none"> - Defective motor or condensator - Faulty sequencers - Faulty relay
The desired room temperature cannot be reached	<ul style="list-style-type: none"> - One or more defective elements - Defective thermostat or wrong thermostat setting - Voltage lower than that indicated on the nameplate - Heat losses greater than the unit's capacity - Faulty sequencers - Open unit breaker

N.B. If you do not solve the problem after checking these points, cut off the power supply at the main electrical panel and contact our customer service (see the "Limited warranty" section to obtain the phone numbers).

REPLACEMENT COMPONENT LIST

REF. #	PART #	DESCRIPTION
1	CAP-002	CAPACITOR 20 UF FOR 1 HP AT 240 V WITH SUPPORT
1	CAP-010	CAPACITOR 6 UF FOR 1/3 HP AT 240 V WITH SUPPORT
2	MOSEF1023	REPLACEMENT KIT SEF MOTOR/BLOWER 10-23 KW
2	MOSEF2730	REPLACEMENT KIT SEF MOTOR/BLOWER 27-30 KW
2	MOSEF1023WB	REPLACEMENT KIT SEF MOTOR ONLY 10-23 KW
2	MOSEF2730WB	REPLACEMENT KIT SEF MOTOR ONLY 27-30 KW
3	BLO-004	SQUIRREL CAGE & BLOWER 10-8 FOR 10 TO 23 KW.
3	BLO-005	SQUIRREL CAGE & BLOWER 12-11 FOR 27 & 30 KW.
4	BREA-001	BREAKER 30 AMPS 120/240 VOLTS 2 POLES, TYPE BQ SIEMENS
4	BREA-002	BREAKER 40 AMPS 120/240 VOLTS 2 POLES, TYPE BQ SIEMENS
4	BREA-003	BREAKER 50 AMPS 120/240 VOLTS 2 POLES, TYPE BQ SIEMENS
5	TRF200040D	TRANSFO 240-208/24/50VA (SEC.10.5 &13)
6	REL-004	RELAY 24 V, FORM X, 18 A RES.
6	REL-005	RELAY 240 V, FORM X, 18 A RES.
6	REL-003	RELAY 24 V, FORM C, 20 A NO, 10 A NC
7	SEQ-005	DOUBLE SEQUENCER 24 V, H1-20 C40-90, H30-90 C1-30
7	SEQ-003	SINGLE SEQUENCER 24 V, H30-90 C1-30
7	SEQ-007	DOUBLE SEQUENCER 24 V, H40-100 C1-30, H25-60 C25-45
8	PROT-010	THERMAL PROTECTION L-160-40 - 10KW TO 23 KW
8	PROT-019	THERMAL PROTECTION L-140-40 - 27KW & 30 KW
9	SWI-004	SPDT SWITCH WITHOUT MARKINGS 16 A, 250 V, 3/4 HP, 250 V, T85
10	PL-001	GREEN PILOT LIGHT 28 V, 04 A
10	PL-002	GREEN PILOT LIGHT 250 V, 1/3 W
11	ELF-SEF0521	ELEMENT ASSEMBLY 5KW
11	ELF-SEF0421	ELEMENT ASSEMBLY 4KW
11	ELF-SEF0321	ELEMENT ASSEMBLY 3.5 KW
11	ELF-SEF0221	ELEMENT ASSEMBLY 2 X 2.5 KW



LIMITED WARRANTY

This limited warranty is offered by Stelpro Design inc. ("Stelpro") and applies to the following products made by Stelpro: SEF10, SEF15, SEF18, SEF20, SEF23, SEF27, SEF30 models. **Please read this limited warranty carefully.** Subject to the terms of this warranty, Stelpro warrants its products and their components against defects in workmanship and/or materials for the following periods from the date of purchase: **5 years**. This warranty applies only to the original purchaser; it is non-transferable and cannot be extended.

CLAIM PROCEDURE

If at any time during the warranty period the unit becomes defective, you must cut off the power supply at the main electrical panel and contact 1) your installer or distributor, 2) your service center or 3) Stelpro's customer service department. In all cases, you must have a **copy of the invoice** and provide the **information written on the product nameplate**. Stelpro reserves the right to examine or to ask one of its representatives to examine the product itself or any part of it before honoring the warranty. Stelpro reserves the right to replace the entire unit, refund its purchase price or repair a defective part. Please note that repairs made within the warranty period must be authorized in advance in writing by Stelpro and carried out by persons authorized by Stelpro.

Before returning a product to Stelpro, you must have a Stelpro authorization number (RMA). To obtain it, call the customer service department at: **1-800-363-3414** (electricians and distributors - French), **1-800-343-1022** (electricians and distributors - English), or **1-866-766-6020** (consumers). The authorization number must be clearly written on the parcel or it will be refused.

CONDITIONS, EXCLUSIONS AND DISCLAIMER OF LIABILITY

This warranty is exclusive and in lieu of all other representations and warranties (except of title), expressed or implied, and Stelpro expressly disclaims and excludes any implied warranty of merchantability or implied warranty of fitness for a particular purpose.

Stelpro's liability with respect to products is limited as provided above. Stelpro shall not be subject to any other obligations or liabilities whatsoever, whether based on contract, tort or other theories of law, with respect to goods or services furnished by it, or any undertakings, acts or omissions relating thereto. Without limiting the generality of the foregoing, Stelpro expressly disclaims any liability for property or personal injury damages, penalties, special or punitive damages, damages for lost profits, loss of use of equipment, cost of capital, cost of substitute products, facilities or services, shutdowns, slowdowns, or for other types of economic loss or for claims of a dealer's customers or any third party for such damages. Stelpro specifically disclaims all consequential, incidental and contingent damages whatsoever.

This warranty does not cover any damages or failures resulting from: 1) a faulty installation or improper storage; 2) an abusive or abnormal use, lack of maintenance, improper maintenance (other than that prescribed by Stelpro) or a use other than that for which the unit was designed; 3) a natural disaster or an event out of Stelpro's control, including, but not limited to, hurricanes, tornadoes, earthquakes, terrorist attacks, wars, overvoltage, flooding, water damages, etc. This warranty does not cover any accidental or intentional losses or damages, nor does it cover damages caused by negligence of the user or owner of the product. Moreover, it does not cover the cost of disconnection, transport, and installation.

The warranty is limited to the repair or the replacement of the unit or the refund of its purchase price, **at the discretion of Stelpro**. Any parts replaced or repaired within the warranty period with the written authorization of Stelpro will be warranted for the remainder of the original warranty period. This warranty will be considered null and void and Stelpro will have the right to refuse any claims if **products have been altered** without the written authorization of Stelpro and if the nameplate numbers have been removed or modified. This warranty does not cover scratches, dents, corrosion or discoloration caused by excessive heat, chemical cleaning products and abrasive agents. It does not cover any damage that occurred during the shipping.

Some states and provinces do not allow the exclusion or limitation of incidental or consequential damages and some of them do not allow limitations on how long an implied warranty lasts, so these exclusions or limitations may not apply to you. This warranty gives you specific legal rights and you may have other rights which vary from state to state or from province to province.

APPENDIX 1

When you receive your furnace, the air flow dampers (patent pending) are factory pre-adjusted. Moreover, a screw prevents you from closing dampers at a lower position than that pre-adjusted. **You must never remove that screw to close the dampers.** However, you can open them (equally on each side) to increase the air flow. Refer to tables below to evaluate the air flow according to the dampers' opening.

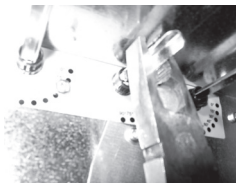
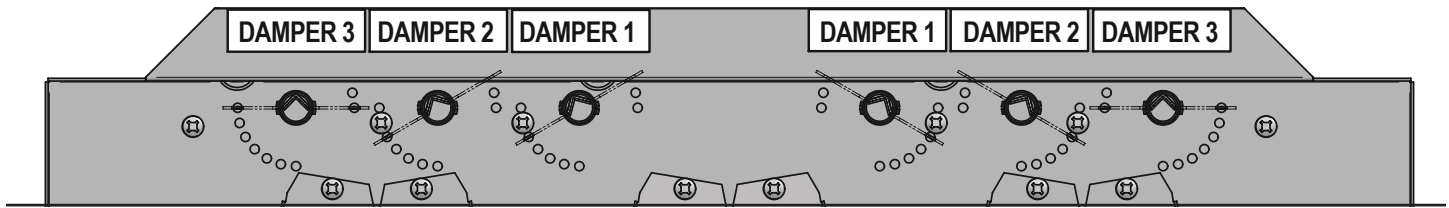
DAMPERS PRE-ADJUSTMENT

10 kW: dampers 1 and 2 @ 30° - damper 3 closed

15-18 kW: dampers 1 and 2 @ 45° - damper 3 closed

20-23 kW: damper 1 @ 45° - damper 2 @ 60° - damper 3 closed

27-30 kW: dampers 1 and 2 @ 45° - damper 3 @ 90°



You can modify the angle of the first and second damper but there is a bolt that will block at one limit, simply press and turn with plyers.



The chosen angle is where you will feel a bump with your finger.

10 TO 23 kW												
UNIT	ESP	DAMPER 1	DAMPER 2	DAMPER 3	L		ML		MH		H	
kW	IWC	DEGREES	DEGREES	DEGREES	CFM	Δ T (°F)	CFM	Δ T (°F)	CFM	Δ T (°F)	CFM	Δ T (°F)
10	0.2	30	30	0	802*	37*	896	33	896	33	952	32
15	0.2	45	45	0	896	50	952*	47*	1088	41	1129	40
18	0.2	45	45	0	896	60	952*	57*	1088	50	1129	48
20	0.2	45	60	0	896	67	952*	63*	1088	55	1129	53
23	0.2	45	60	0	896	77	952	72	1088*	63*	1129	61
10	0.5	30	30	0	690*	43*	748	40	817	37	874	34
15	0.5	45	45	0	817	55	970*	46*	1017	44	1052	43
18	0.5	45	45	0	817	66	970*	56*	1017	53	1052	51
20	0.5	45	60	0	817	73	970	62	1017*	59*	1052	57
23	0.5	45	60	0	817	84	970	71	1017*	68*	1052	66

27 TO 30 kW												
UNITÉ	ESP	DAMPER 1	DAMPER 2	DAMPER 3	L		M		H			
kW	IWC	DEGREES	DEGREES	DEGREES	CFM	Δ T (°F)	CFM	Δ T (°F)	CFM	Δ T (°F)		
27	0.2	45	45	90	1717	47	1901	43	2060	39		
30	0.2	45	45	90	1717	52	1901	47	2060	44		
27	0.5	45	45	90	1573	51	1751	46	1905	43		
30	0.5	45	45	90	1573	57	1751	51	1905	47		
27	0.75	45	45	90	1500	54	1716	47	1810	45		
30	0.75	45	45	90	1500	60	1716	52	1810	50		

L = Low; ML = Medium/Low; M = Medium; MH = Medium/High; H = High

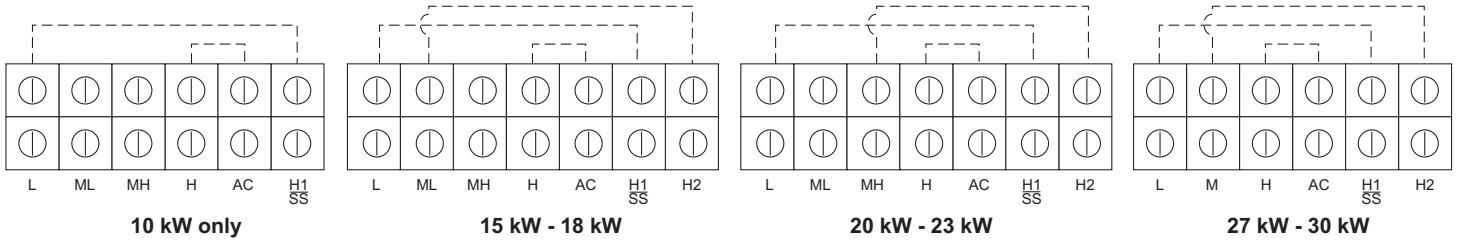
Speeds and dampers are factory adjusted

The continuous mode is set at low speed

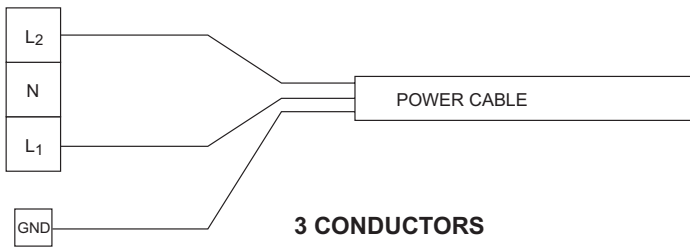
* recommended (factory pre-cabled)

Speeds can be changed with the jumpers on the motor terminal block. Refer to the images below.

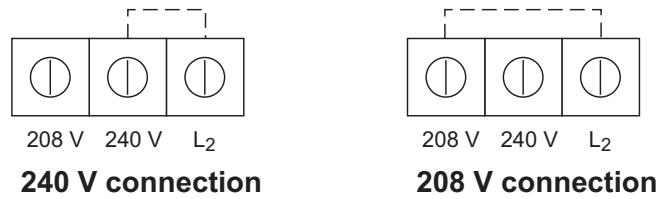
DEFAULT CONFIGURATION



ELECTRICAL CONNECTION OF THE FURNACE



Voltage can be changed (240/208 V) with the jumpers on the motor terminal block. Refer to the image below.



CFM/SPEED TABLE

10 TO 23 kW											
ESP	DAMPER 1	DAMPER 2	DAMPER 3	L		ML		MH		H	
IWC	DEGREES	DEGREES	DEGREES	IM (A)	CFM	IM (A)	CFM	IM (A)	CFM	IM (A)	CFM
0.2	30	30	0	1.2	802	1.4	896	1.5	896	1.8	952
0.2	45	45	0	1.4	896	1.6	952	1.6	1088	2	1129
0.2	60	60	0	1.6	896	1.9	1129	2	1219	2.3	1325
0.2	75	75	0	1.7	910	2.1	1172	2.2	1325	2.6	1524
0.2	90	90	0	1.7	924	2.2	1172	2.7	1385	2.9	1524
0.5	30	30	0	1	690	1.1	748	1.3	817	1.6	874
0.5	45	45	0	1.2	817	1.4	970	1.5	1017	1.8	1052
0.5	60	60	0	1.3	887	1.5	1052	1.7	1171	1.9	1241
0.5	75	75	0	1.4	913	1.7	1149	1.9	1349	2.1	1379
0.5	90	90	0	1.4	913	1.9	1193	2.1	1379	2.4	1478

27 TO 30 kW									
ESP	DAMPER 1	DAMPER 2	DAMPER 3	L		M		H	
IWC	DEGREES	DEGREES	DEGREES	IM (A)	CFM	IM (A)	CFM	IM (A)	CFM
0.2	30	30	0	3.9	1717	4.3	1901	4.5	2060
0.2	45	45	0	4.1	1717	4.7	1993	5.8	2423
0.2	60	60	0	4.3	1717	5	1962	6.1	2472
0.2	75	75	0	4.3	1717	5	1993	6.1	2472
0.5	30	30	0	3.3	1573	3.8	1751	4.3	1905
0.5	45	45	0	3.7	1594	4.4	1857	5.2	2167
0.5	60	60	0	4	1616	4.7	1887	5.4	2207
0.5	75	75	0	3.8	1594	4.9	1887	5.8	2250

L (Low) ; ML (Medium/Low) ; M (Medium) ; MH (Medium/High) ; H (High)