

NON-PROGRAMMABLE ELECTRONIC THERMOSTAT FOR BASEBOARDS AND CONVECTORS



560-000081 INS-ST202NP_1025

1-844-STELPRO
WWW.STELPRO.COM

ST202NP

IMPORTANT INSTRUCTIONS

THE THERMOSTAT MUST BE INSTALLED BY A CERTIFIED ELECTRICIAN.

Connect the thermostat to a 120 to 240 VAC power source ONLY and comply with load limits.

WARNING – HIGH VOLTAGE. Turn off the power supply before installation and maintenance. Leave at least 12 in. (30 cm) clearance around the thermostat to ensure that it is properly vented.

SAVE THESE INSTRUCTIONS

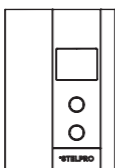
TECHNICAL SPECIFICATIONS

VOLTAGE AND LOAD		
SUPPLY VOLTAGE	LOAD AT 120 V	LOAD AT 240 V
VOLTS	WATTS	WATTS
120-240	150-1000	300-2000

Load control type	Resistive
Frequency	60 Hz
Storage temperature	-40 °C to 50 °C (-40 °F to 122 °F)
Operating temperature	-20 °C to 50 °C (-4 °F to 122 °F). LC display less effective below 0 °C (32 °F)
Humidity	5 % to 98 % without condensation
Action	Type 1.Y
Pollution degree	2
Software	Class A
Rated impulse voltage	Category II (1500 V)
Independently mounted control for surface mounting	
Thermistor used as a sensor, carries no load current	
Overload protection device external to the control: circuit breaker (refer to local electrical code)	

BEFORE YOU GET STARTED

BOX CONTENTS



one (1) thermostat with a door on the front

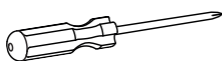


two (2) twist-on wire connectors suitable for copper wires



two (2) mounting screws

TOOLS REQUIRED



Phillips screwdriver

INSTALLATION

SELECTION OF THE THERMOSTAT LOCATION

The thermostat must be mounted to a connection box on a wall facing the heating unit, at around 1.5 m (5 feet) above the floor level, on a section of the wall exempt from pipes or air ducts.

Do not install the thermostat in a location where temperature measurements could be altered. For example:

- close to a window, on an external wall, or close to a door leading outside;
- exposed directly to the light or heat of the sun, a lamp, a fireplace or any other heat source;
- close or in front of an air outlet;
- close to concealed ducts or a chimney;
- in a location with poor air flow (e.g. behind a door), or with frequent air drafts (e.g. head of stairs);
- ensure that the air vents of the thermostat are clean and clear of any obstruction.

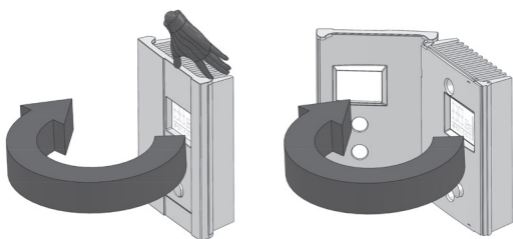
WARNING: Turn off the power supply.

PREPARING THE THERMOSTAT

1. Open the door with your hand or by using a flat screw driver.

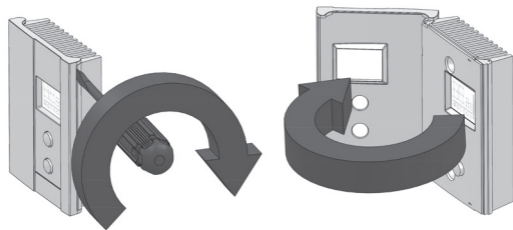
With hand

Open by freeing the door at the top right corner of the thermostat.



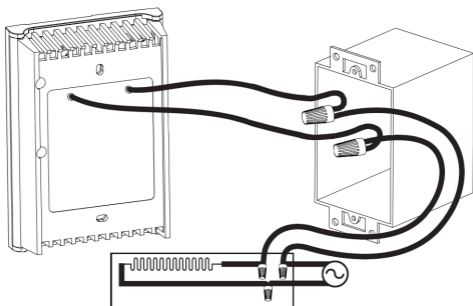
Using a flat screw driver

Insert the screw driver in the side slot at the top right corner of the thermostat and turn delicately until the door is freed.

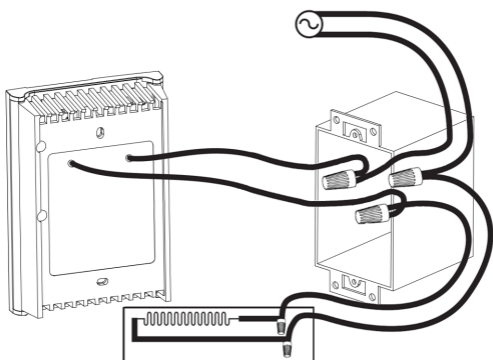


CONNECT THE POWER SUPPLY WIRES

1. Make the electrical connections using the supplied twist-on wire connectors. When making the connection with aluminum wire, make sure that you are using connectors identified CO/ALR. Please note that the thermostat wires do not have polarity. Therefore, the way they are connected is not important.

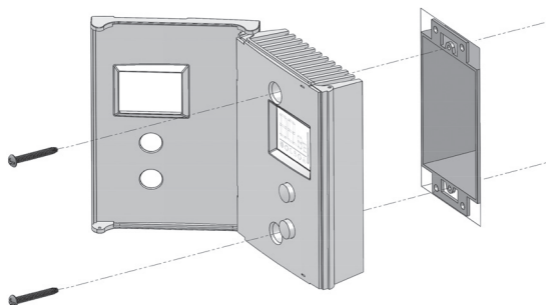


2-WIRE INSTALLATION

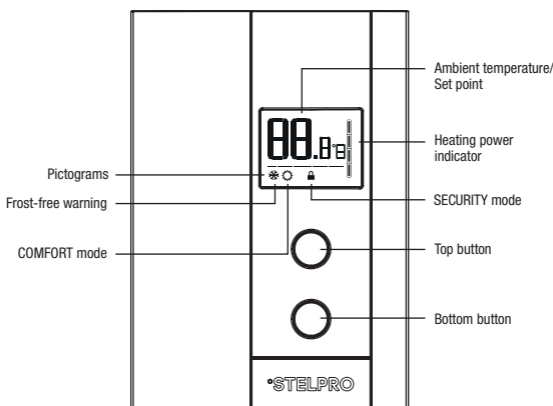


4-WIRE INSTALLATION

- Place all the wires inside the electrical box.
- Fix the thermostat to the electrical box using the two screws provided.
- Close the thermostat door.
- Turn on the power.



INTERFACE



INITIAL SETTING

TEMPERATURE UNIT SELECTION: CELSIUS OR FAHRENHEIT

When starting up for the first time, °C flashes. Use the up and down buttons to choose between °C or °F. To confirm your choice, press both buttons simultaneously to confirm the temperature format.

KEY FEATURES

TEMPERATURE SET POINTS

The figures displayed above the pictogram indicate the temperature set point. It can be displayed in degrees Celsius or Fahrenheit (see “Display in either degrees Celsius/Fahrenheit”).

To adjust the set point, just press down the top button to increase the value, or the bottom button to decrease it. Set points can be adjusted by increments of 0.5°C (1°F).

To quickly scroll through the set point values, press and hold down the button.

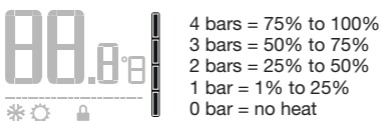
When you press a button the current set point is shown and the ⚙️ flashes. To return to room temperature, do not press any buttons for 3 seconds or press both buttons simultaneously.

The minimum set point is 3°C (37°F), and the maximum set point is 30°C (86°F).

You can turn off the thermostat by lowering the set point below 3°C (37°F). The set point value displayed will be --.-, and heating system start up will be impossible.

HEATING POWER INDICATOR

The level of power used to maintain the temperature at the set point is expressed as a percentage indicated by the number of bars in the thermometer displayed. The heating power used is displayed as follows:



FROST-FREE WARNING ❄️

The ❄️ icon is displayed when the temperature set point is between 3°C (37°F) and 5°C (41°F). A minimum temperature will be maintained to ensure frost control.

ADVANCED FEATURES

DISPLAY IN EITHER DEGREES CELSIUS/ FAHRENHEIT


The thermostat can display the ambient temperature and the set point in degrees Celsius (standard factory setting) or Fahrenheit.

1. To switch from degrees Celsius to degrees Fahrenheit and vice versa, simultaneously press down the two buttons for 3 seconds. Once the three seconds are over the °C or °F symbol will flash. Release the buttons.
2. Press down the top button to switch from the degrees Celsius to the degrees Fahrenheit, and conversely. The degree Celsius or Fahrenheit symbol will be displayed.
3. When the adjustment is completed, release the buttons and wait for 5 seconds to exit the adjustment function.



SECURITY MODE

It is possible to impose a maximum temperature set point by activating this mode. Then, it becomes impossible to exceed this set point, regardless of the current mode (Day/Night). However, it is still possible to lower the set point at your discretion.

Procedures to activate the SECURITY mode

1. Adjust the set point to the desired maximum temperature.
2. Simultaneously press down the two buttons for more than 13 seconds, until the  icon appears (note that the °C or °F symbol will blink after 3 seconds, but continue to keep both buttons pressed down).
3. Release the buttons. The thermostat is now locked.

Procedures to deactivate the SECURITY mode

1. To deactivate the SECURITY mode, start by cutting off the thermostat power at circuit breaker and wait at least 20 seconds.
2. Turn the thermostat power back on and the  icon will blink for a maximum of 5 minutes.
3. Simultaneously press down both buttons for 13 seconds. After 13 seconds, the icon  will disappear and the degrees symbol (°C or °F) will stop blinking, indicating that the Security mode is deactivated. Release the buttons.

SOFTWARE VERSION AND PRODUCTION DATE

When you press both buttons simultaneously for 3 seconds to switch the display from degrees Celsius to degrees Fahrenheit, a series of numbers will appear. This series indicates the software version and the production date.

IMPORTANT WARNING

During the use of this electronic thermostat if one of the following problems should occur :

- The digital display does not turn on.
- The digital display goes out a few minutes and turns on again.

It is probably because the heater connected to the thermostat is incorrectly ventilated. This causes the heater to overheat which activates its thermal protection which results in a power failure to the thermostat.

IT IS VERY IMPORTANT TO MAKE SURE THAT NOTHING IMPEDES THE AIR FLOW OF THE HEATERS INTAKE AND OUTPUT

to allow for the good functioning of the electronic thermostat. This will also ensure your comfort and security.



Please remit the instructions and this note to the future owner.